



GROUND FLOOR APARTMENT 4 BEDROOMS 4 BATHROOMS IN ELVIRIA

 Elviria

REF# R5389717 899.000 €

BEDS

4

BATHS

4

BUILT

116 m²

TERRACE

50 m²

Holidays Investment by the sea in Elviria, Marbella! ??

Ideal for families, this rarely available spacious 4 bedroom 4 bathroom elevated groundfloor apartment located only 1 min walk to the best beaches in Marbella. This open plan apartment is fully equipped with everything you need for a perfect holiday and it has a large terrace.

Within less than 5 minutes walk you can find an amazing Italian Restaurant, Beachclub and chiringuito where you can enjoy lovely traditional food.

Within the complex you can find two shared swimming pools, children's pool all gated and surrounded by beautiful landscaped gardens,. The complex has direct access to the beach.

Mercadona and Lidl are located within walking distance. 15 min walk to Centro Commercial in Elviria where you can find a great selection of cafés, variety of restaurants, supermarkets and much more amenities.

Wait no more and visit this property!!!

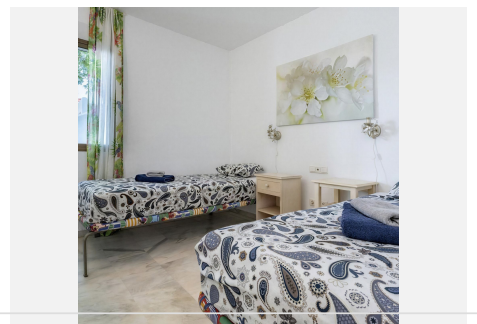
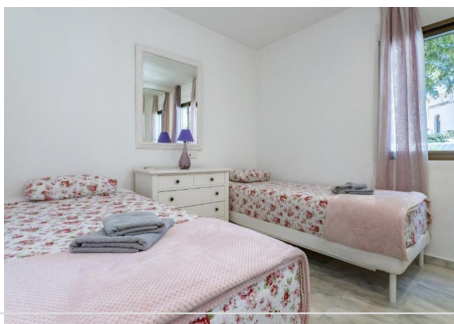
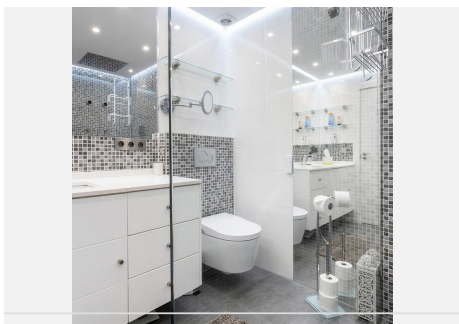
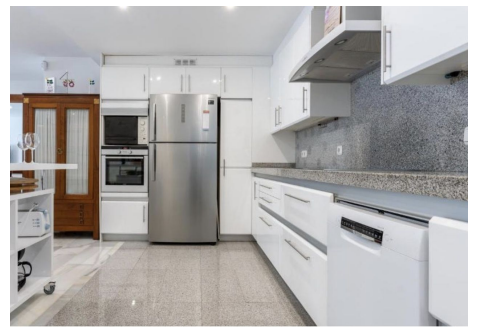
This property has a Holiday Rental Licence in place and compiles with the legal requirements for it.

AREA INFO

Marbella East stretches from the edge of Marbella towards Malaga and it contains the following resorts & suburbs all located along the A7 main road: Rio Real, Los Monteros, El Rosario, Elviria, Las Chapas and Cabopino.

This part of Marbella is very popular due to the easy access to Malaga Airport which is located only 30 minutes drive away as well as due to the large variety of supermarkets, international restaurants & bars, all type of amenities, entertainment, Golf & leisure activities, international schools and much more.

There is a large variety of properties on offer in this area from exclusive beachfront apartments, luxury private houses & New developments offering the latest qualities and services to more reasonable priced apartments located in beautifully maintained areas with magnificent sea or mountain views.



IDILIQ

ESTATES

