



R5389144

📍 Nueva Andalucía

REF# R5389144 550.000 €

BEDS

2

BATHS

2

BUILT

80 m<sup>2</sup>

TERRACE

70 m<sup>2</sup>

This fully renovated ground-floor apartment blends modern luxury with effortless indoor-outdoor living. It features two bedrooms, two full bathrooms, and a spacious private terrace designed for entertaining and direct access to the communal gardens.

**Key Features:** Meticulously upgraded with high-end contemporary finishes throughout. Sun-drenched interiors: Expansive open-concept living space flooded with natural light. Gourmet kitchen: Sleek, modern culinary space featuring premium integrated appliances.

**Primary sanctuary:** Spacious main bedroom complete with a luxurious en-suite bathroom. **Guest comfort:** Generous second bedroom paired with a stylishly finished second bathroom. **Terrace oasis:** An exceptionally large private terrace divided in half by glass curtains perfect for alfresco dining and lounging in the summer and dining inside on the terrace in the winter.

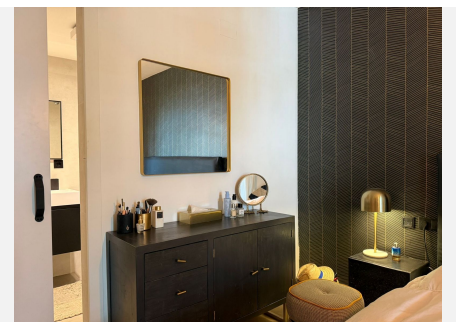
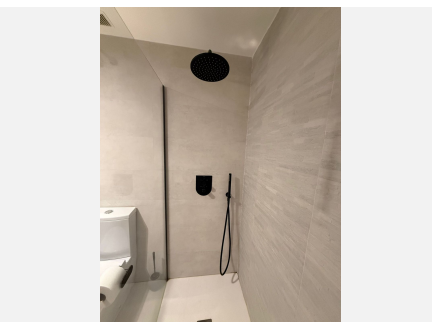
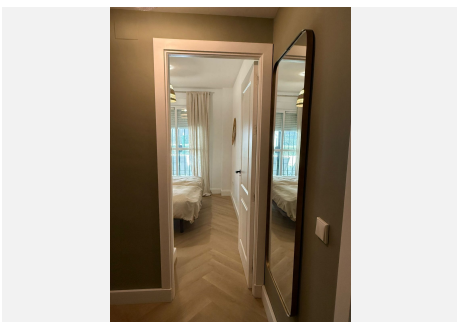
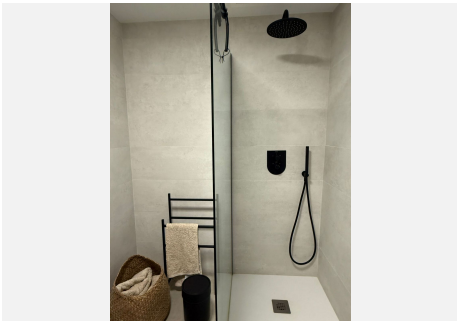
The property includes a private covered parking space in front of the property in the communal garage.

"The property is set within exceptionally generous communal grounds, highlighted by a magnificent swimming pool and a separate safe-depth kids' pool. Meticulously landscaped gardens wrap around the sun  
+34 951 123 083 | +44 (0)330 179 8687 | info@idiliqestates.com Local 28, Edificio D, Centro de Negocios Puerta de Banús, N-340, Km 175, 29660 Nueva Andalucía

# IDILIQ

ESTATES

terraces, creating a private, verdant paradise perfect for peaceful strolls or unwinding under the sun. It is a true outdoor haven designed for both quiet relaxation and active family lifestyles."



# IDILIQ

ESTATES

