



R5388103

📍 Estepona

REF# R5388103 4.995.000 €

BEDS

3

BATHS

4

BUILT

206 m²

TERRACE

125 m²

Set within the Torre Bermeja community along the New Golden Mile, this duplex penthouse is a considered study in artful dwelling. Traditional Andalusian architecture meets a highly refined interior landscape. Here, open volume and a distinct spatial rhythm define the 200-square-meter floor plan. It is a home that relies on material honesty and tactile finishes rather than overstatement.

The interior is designed around the light interplay that shifts throughout the day. A sleek, form-driven kitchen integrates seamlessly into the main living area, pairing clean lines with high-performance appliances. Custom-built wardrobes ensure the aesthetic remains completely uncluttered. An integrated Bang & Olufsen audio system and a modern electric fireplace anchor the living space, creating an environment built for textured calm. Stillness. Sunlight. Space to breathe.

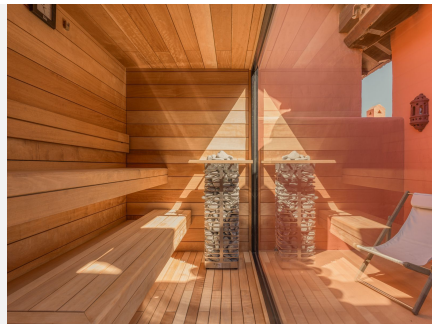
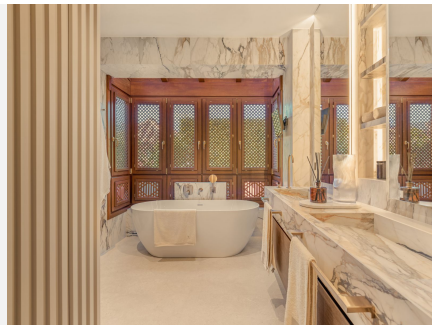
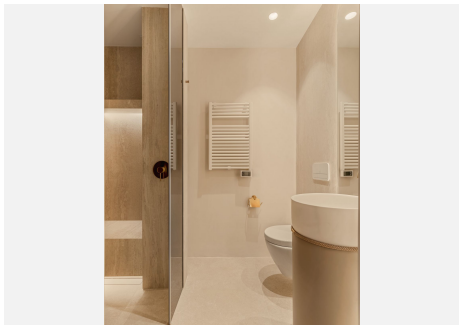
Stepping outside reveals an additional 125 square meters of terrace. This expansive area provides a framed perspective of the natural surroundings. The inclusion of understated Kettal pieces creates an outdoor environment rooted in artisanal modernism. Complete with a private sauna and a jacuzzi, the sun terrace is

IDILIQ

ESTATES

a space inherently designed for modern ritual and cultivated taste.

Three serene bedrooms and four bathrooms continue the architectural narrative. Every room maintains the home's gallery-like minimalism, offering a quiet retreat from the world outside. The result is a highly thoughtful living experience that prioritizes a human-centric perspective over traditional real estate clichés.



IDILIQ

ESTATES

