



HOUSE 5 BEDROOMS 4 BATHROOMS IN TORREMUELLE

 Torremuelle

REF# R5387836 1.300.000 €

BEDS	BATHS	BUILT	PLOT	TERRACE
5	4	364 m ²	648 m ²	255 m ²

Stunning renovated detached Villa with beautiful sea and mountain views in Torremuelle, Benalmádena.

Property Highlights:

Bedrooms: 5 generously proportioned bedrooms all with air conditioning

Bathrooms: 4 modern bathrooms (including 2 en-suites)

Brand new luxury modern kitchen fitted with Bosch appliances plus separate utility room

Large open plan lounge/dining room with doors leading directly onto a large terrace which benefits from sea views.

Outdoor Features: Large private swimming pool, various expansive exterior terraces for dining and relaxation

Views: Stunning, panoramic sea views and beautiful mountain views

Orientation: Prime orientation ensuring excellent winter sun and late evening sun in summer until sunset

Condition: The interior is completely renovated. The exterior is mid way through being renovated and will be finished prior to completion. This will be legally binding upon the owner to do this.

Set within a tranquil and exclusive enclave, this villa is a haven of peace and luxury. The recent, comprehensive renovation has created a contemporary living space, with an emphasis on brightness and style. Step outside onto the various large exterior terraces, one has an outside kitchen, bbq and dining areas and on the lower a large sparkling private pool awaits and sun bathing terrace awaits.

The exceptional, sun-drenched orientation is a key feature, capturing the best of the Mediterranean sun throughout the day and into the late evening during the summer months, while also providing excellent warmth during the winter.

Location and Amenities:

The villa is ideally located in upper Torremuelle benefitting from wonderful sea views. Torremuelle is a highly desirable residential area known for its natural beauty and excellent transport links.

Transport Hub: A 10-minute walk leads directly to the local Torremuelle train station (RENFE C1 line), providing swift and easy access to Málaga Airport, Central Málaga and Fuengirola, making travel a breeze.

Beaches: Just 3 minutes by car or a 20 minute walk to various beautiful beaches.

Local Charm: Enjoy the convenience of walking distance to the charming, traditional Spanish village of Benalmádena Pueblo and its many amenities, including local shops, restaurants and bars.

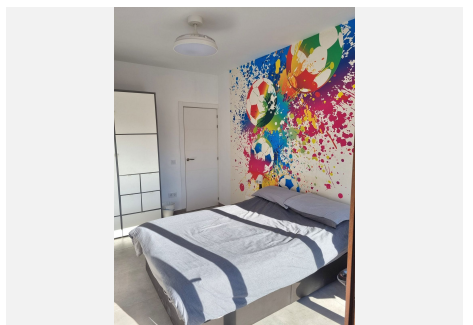
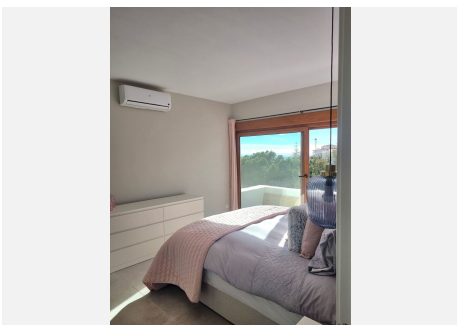
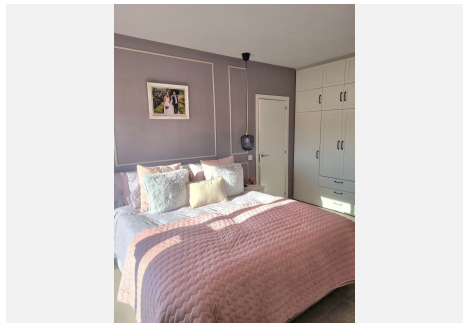
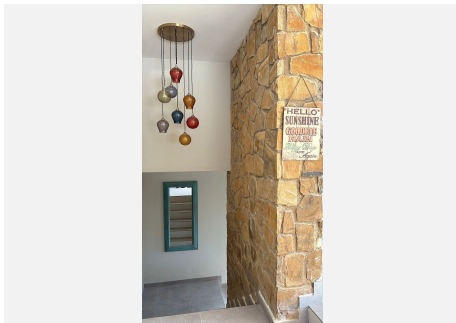
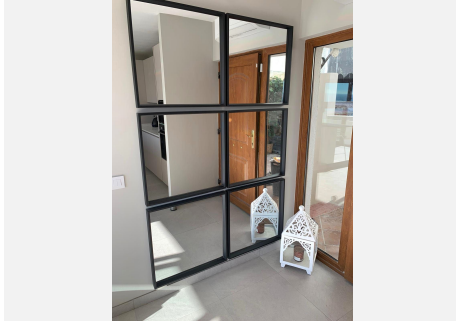
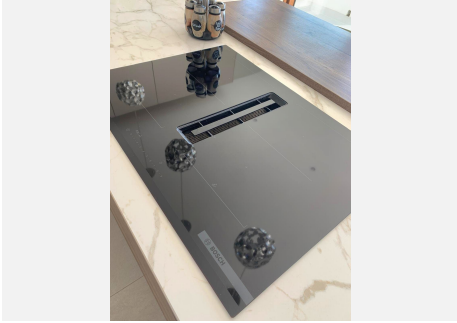
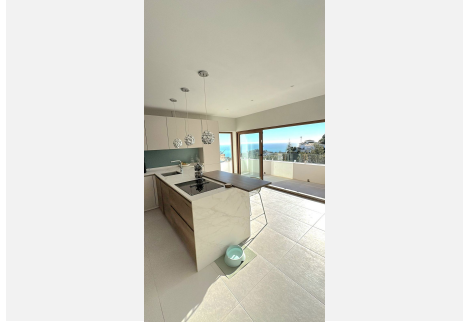
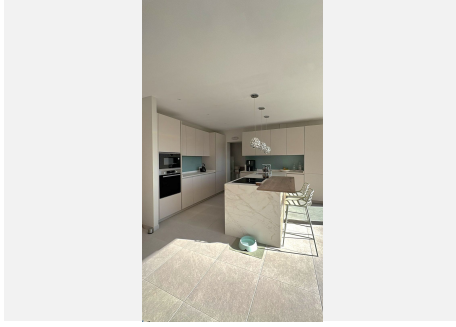
Three International private schools within a few minutes drive, one within walking distance. State primary and secondary schools are also close by.

New racket centre with padel & tennis courts within walking distance.

This property offers a blend of privacy, luxury, stunning natural beauty, and excellent convenience, making it the perfect setting for your dream Spanish home.

IDILIQ

ESTATES



IDILIQ

ESTATES

