



## MIDDLE FLOOR APARTMENT 2 BEDROOMS 2 BATHROOMS IN NUEVA ANDALUCÍA

 Nueva Andalucía

REF# R5386852    420.000 €

BEDS

2

BATHS

2

BUILT

85 m<sup>2</sup>

TERRACE

15 m<sup>2</sup>

Newly built apartment located in La Campana, a highly connected and fast-growing area close to Puerto Banús, Marbella, and all essential amenities.

The property offers a bright and comfortable layout, with beautiful views of La Concha mountain and a modern, practical design, ideal for everyday living.

It includes a private parking space and a storage room.

The development features excellent communal facilities, including a gym and a rooftop swimming pool, perfect for relaxing and enjoying open panoramic views.

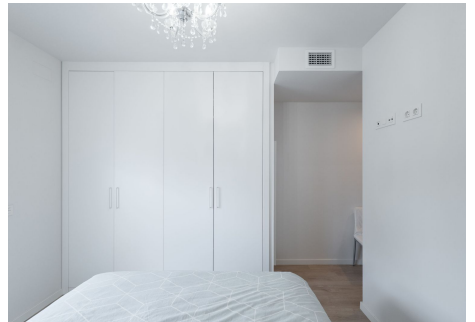
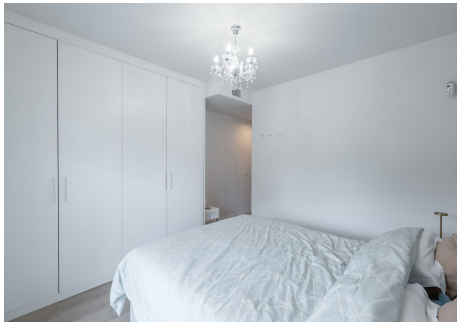
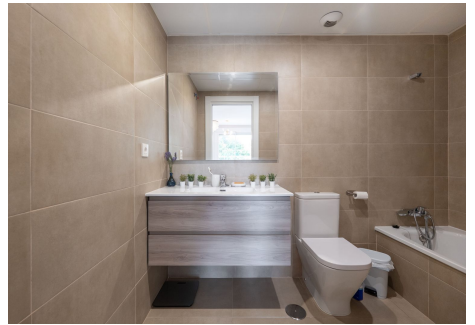
The area is very well established and conveniently located, with everything within walking distance—supermarkets, restaurants, cafés, nurseries, and schools—making daily life easy and

# IDILIQ

ESTATES

comfortable.

An ideal choice both for permanent living and investment, thanks to its prime location, strong rental demand, and excellent lifestyle offering.



# IDILIQ

ESTATES

