



R5383852

📍 Benahavís

REF# R5383852 5.500.000 €

BEDS

5

BATHS

6

BUILT

290 m<sup>2</sup>

PLOT

1317 m<sup>2</sup>

## Contemporary Villa Under Construction in La Alquería

Located in the prestigious residential area of La Alqueria, this contemporary villa combines modern architecture, energy-efficient construction and spacious living areas in one of the most established residential zones near Marbella. Surrounded by golf courses and green landscapes, the property enjoys privacy, open views and convenient access to daily infrastructure, including supermarkets, sports facilities, international schools and golf clubs.

The villa is currently under construction, with the structural framework already completed. The project has been designed with a strong focus on energy efficiency, natural light and year-round comfort. Its south-facing orientation maximises sunlight throughout the day, while architectural overhangs and thermal-insulated joinery contribute to improved temperature control and reduced energy consumption.

The property holds an A+ energy rating and incorporates advanced climate-control systems, including underfloor heating, integrated air conditioning and a continuous air renewal and ventilation system designed

+34 951 123 083 | +44 (0)330 179 8687 | info@idiliqestates.com Local 28, Edificio D, Centro de Negocios Puerta de Banús, N-340, Km 175, 29660 Nueva Andalucía

# IDILIQ

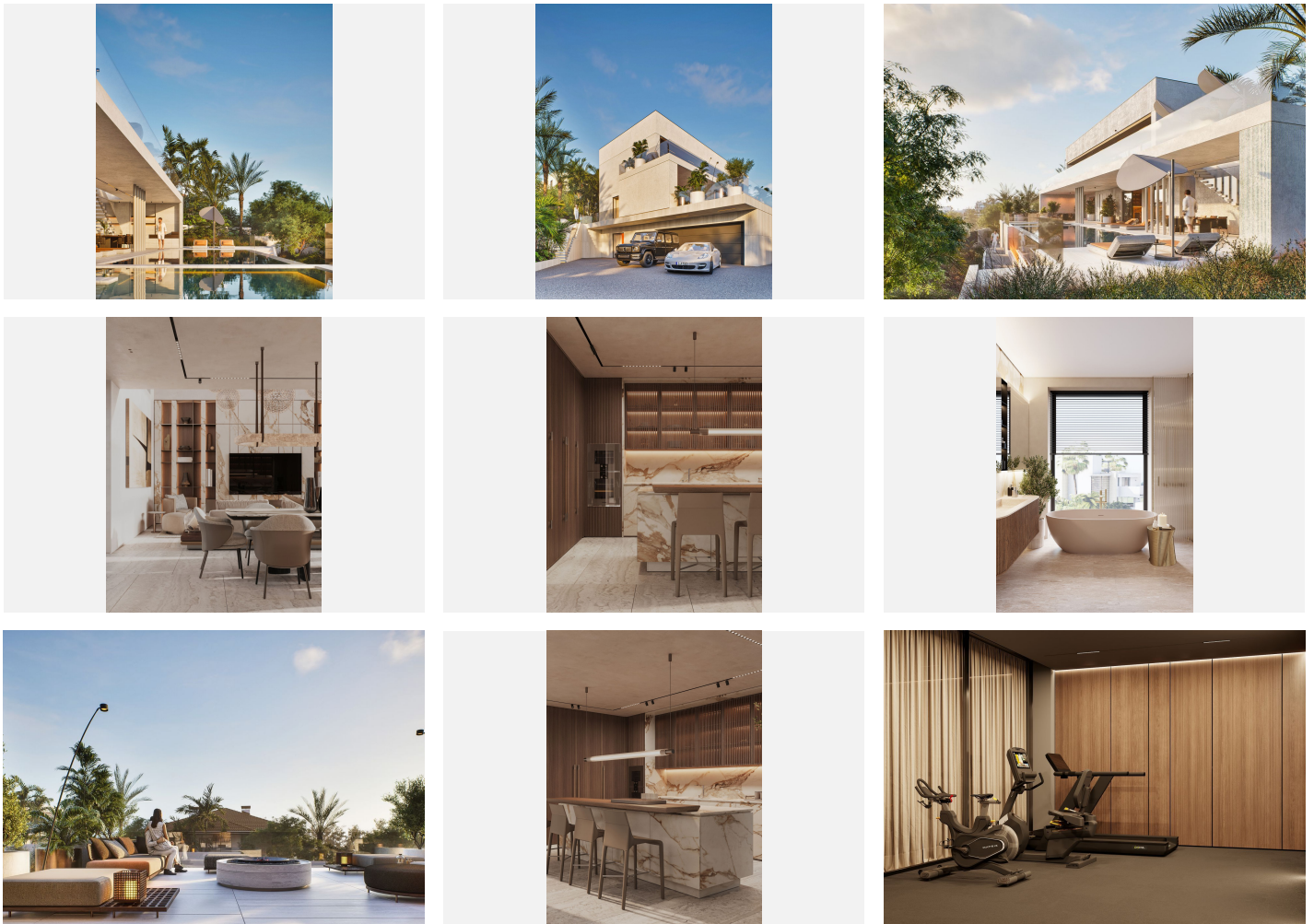
ESTATES

to maintain comfortable indoor conditions throughout the year. Solar panel installation is also available upon request.

Distributed across 4 levels, the villa offers spacious open-plan interiors with large floor-to-ceiling windows connecting directly to the landscaped garden, swimming pool and covered terraces. The basement level includes covered parking for 2 vehicles and additional space suitable for a gym, SPA, cinema room, entertainment area or guest facilities.

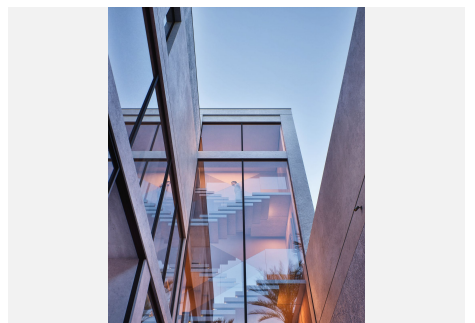
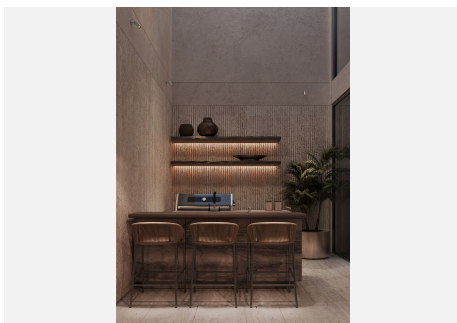
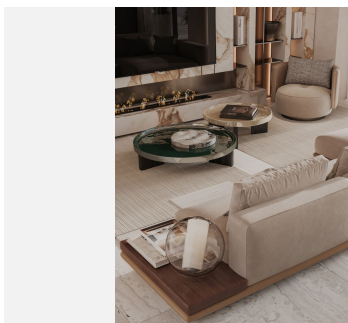
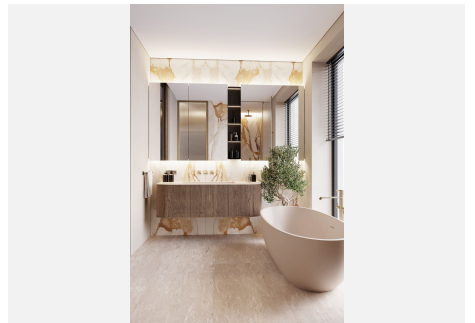
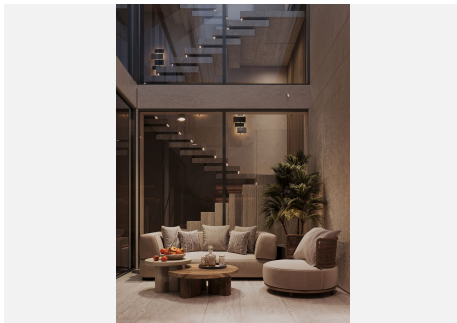
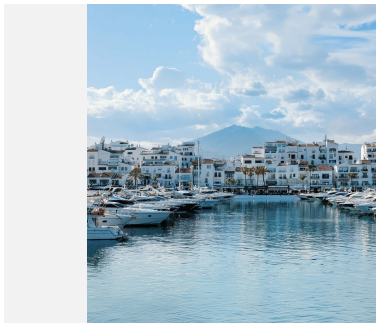
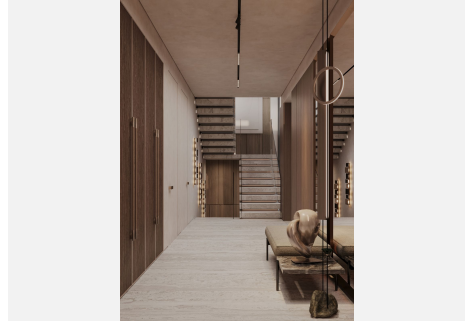
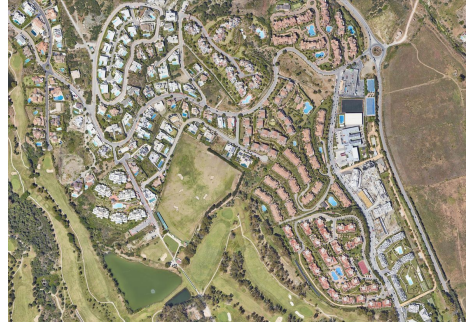
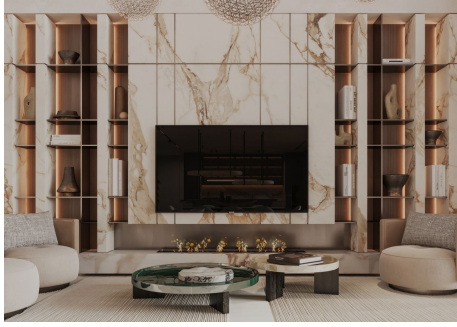
The first floor accommodates the bedroom suites, each with its own private bathroom and access to terraces with open views towards the surrounding greenery, golf areas and coastline. The rooftop terrace offers panoramic views across the Costa del Sol and surrounding landscapes.

The bathrooms are designed with premium sanitary installations and large windows overlooking green areas, combining functionality with a clean contemporary aesthetic.



# IDILIQ

ESTATES



# IDILIQ

ESTATES

