



PENTHOUSE DUPLEX 3 BEDROOMS 2 BATHROOMS IN MARBELLA

 Marbella

REF# R5381911 769.000 €

BEDS

3

BATHS

2

BUILT

135 m²

TERRACE

80 m²

VACATIONAL LICENCE

MAGNIFICENT PENTHOUSE – DUPLEX IN:

SAN PEDRO DE ALCANTARA – BEACH SIDE. Just a 10-minute walk to the sea. (MARBELLA)

Super modern apartment, finished to the highest standards and with an unbeatable location in the beach area of San Pedro de Alcántara.

Situated just a 10-minute walk from the sea and the center of San Pedro de Alcántara. It offers the perfect combination of tranquility, comfort, and Mediterranean lifestyle.

Surrounded by restaurants, a gym, supermarkets, a paddle tennis club, hairdressers.. . all within easy reach, without needing a car.

IDILIQ

ESTATES

The property stands out for its contemporary design, clean lines, and a layout designed to maximize natural light. Every detail has been carefully selected to convey modernity, class, and comfort.

Entrance hall, connected to the living room, spacious, clean, bright, square-shaped, and with a fully equipped open-plan kitchen (separate laundry area). It opens onto a sunny, spacious terrace with views of the beautiful Nueva Alcantara area and all its charms.

Two large bedrooms with ample wardrobes, all of a very good size, and two fantastic full bathrooms.

From the terrace, outside and above, there is a magnificent pergola-covered terrace (approximately 81 m2) with partial sea and mountain views.. . enjoy a magnificent chill-out area and BBQ, and a third bedroom with a connection point to easily add a third bathroom.

An ideal property, both for year-round living and for enjoying holiday stays in a privileged setting.

The apartment includes two underground parking spaces.

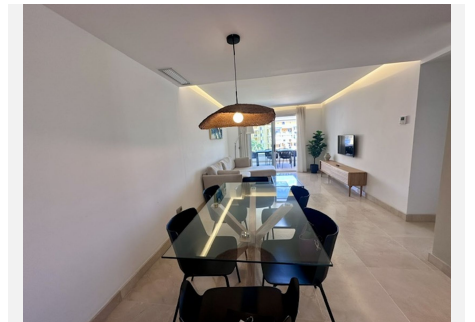
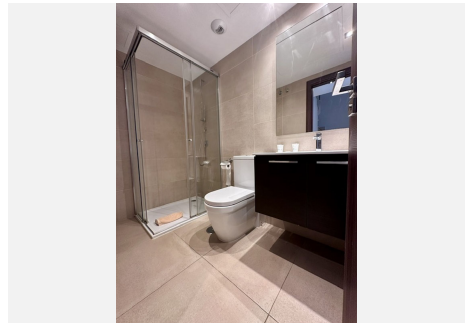
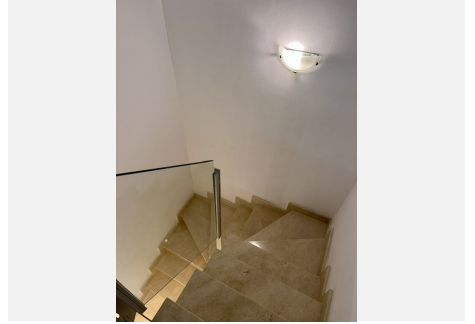
A magnificent and very private communal pool, for the exclusive use of the residents of this residential complex.

Don't hesitate to call us to arrange a visit, because like all good things in life.. . it's a surprise! We'd be delighted to assist you!



IDILIQ

ESTATES



IDILIQ

ESTATES

