

IDILIQ

ESTATES



R5373976

📍 Manilva

REF# R5373976 499.000 €

BEDS

3

BATHS

2

BUILT

101 m²

TERRACE

35 m²

Elevate Your Life Above the Coast – Stunning premium apartment in Manilva
Stunning Sea views and 300m walking distance to the beach!

Step into a new standard of coastal living in Manilva, at the heart of the prestigious Costa del Sol. This exceptional, newly built penthouse is not just a property—it's a strategic lifestyle upgrade. Fully move-in ready, it blends contemporary design with effortless luxury.

Inside, expansive open-plan living sets the tone. The residence features three elegant bedrooms, including a refined master suite with a spacious walk-in wardrobe.

Two designer bathrooms and a guest toilet deliver both comfort and functionality.

A fully equipped, state-of-the-art kitchen seamlessly integrates into the living area, complemented by a separate, dedicated laundry room.

Floor-to-ceiling glass doors open onto a spectacular south-facing terrace-solarium—your private vantage point over the Mediterranean.

+34 951 123 083 | +44 (0)330 179 8687 | info@idiliqestates.com Local 28, Edificio D, Centro de Negocios Puerta de Banús, N-340, Km 175, 29660 Nueva Andlucia

IDILIQ

ESTATES

Covered and open lounge areas create the perfect environment for year-round living, where natural light, sea views, and tranquility become part of your daily rhythm.

Even from within the home, the Mediterranean is always in sight.

This premium asset also includes a generous private parking space and a storage room, conveniently located within the building.

The property is part of a secure, fully gated development with 24/7 video surveillance and resort-level amenities:

– Community features:

Two swimming pools for adults + children's pool

Spa facilities: sauna, jacuzzi, Turkish bath

Fully equipped gym & outdoor gym

Social club & chill-out & picnic areas

Solar panels

Water softener system

Gated community with security camera system

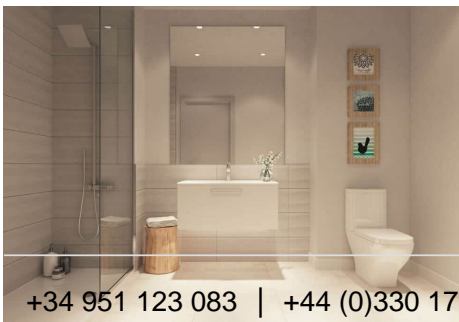
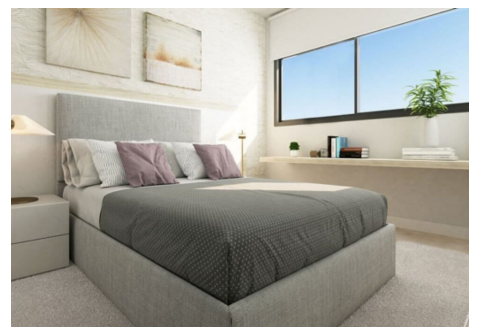
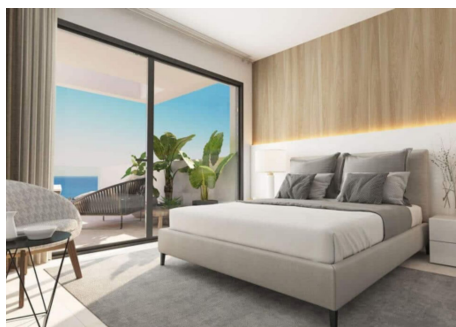
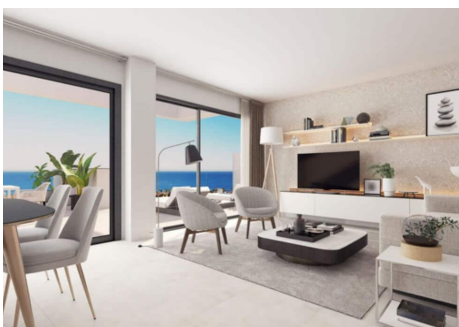
Location is a competitive advantage. You are minutes from unspoiled beaches such as Playa Tubalita, Playa Punta Chullera, and Playa Las Gaviotas, and surrounded by elite golf destinations.

Within 5 minutes, access the exclusivity of Sotogrande, in 15 minutes the sophistication of Estepona and Marbella, or the authenticity of Casares and Ronda.

From golf to sailing, from gastronomy to adventure—this is where lifestyle meets opportunity.

A rare investment in quality of life. Act decisively. Private viewings and virtual tours available.

Set your course. Your new life starts here.



+34 951 123 083 | +44 (0)330 179 6687 | info@idiliqestates.com Local 28, Edificio D, Centro de Negocios Puerta de Banús, N-340, Km 175, 29660 Nueva Andalucía

IDILIQ

ESTATES

