

IDILIQ

ESTATES



R5371204

📍 El Madroñal

REF# R5371204 3.995.000 €

BEDS

5

BATHS

5

BUILT

380 m²

PLOT

1161 m²

TERRACE

161 m²

Silence. Space. Sea.

A home above it all. Where the horizon softens, and time slows.

Set in the hills of Benahavís, surrounded by green valleys and open sky, this exceptional Andalusian villa offers a rare kind of calm — uninterrupted, private, deeply felt.

Reimagined in 2024/2025, the home balances timeless architecture with a refined Scandinavian bohemian interior. Natural wood, soft textures, and muted tones create a quiet, effortless elegance. Underfloor heating runs throughout, adding a gentle, constant comfort beneath every step.

Only the finest materials have been selected.

A bespoke kitchen by KØK Marbella.

Elegant surfaces and tiles from Porcelanosa.

Warm oak flooring.

+34 951 123 083 | +44 (0)330 179 8687 | info@idiliqestates.com Local 28, Edificio D, Centro de Negocios Puerta de Banús, N-340, Km 175, 29660 Nueva Andalucía

IDILIQ

ESTATES

Refined fixtures by Iconico.
Custom carpentry throughout
Impressive cleanings

Every detail considered. Nothing excessive. Everything lasting.

Across three levels, the layout is both generous and intuitive.

The main living space flows an open kitchen and out to expansive terraces, where indoor and outdoor living become one. A discreet guest powder room completes this level together with a bedroom en suite and a large living area with a natural fireplace.

Five bedrooms offer calm and privacy. Three are serene ensuite suites, while the lower level presents two additional spacious rooms with a shared kitchen and bathroom — ideal for guests, extended family, business or independent living.

A flexible space adapts effortlessly — cinema, gym, studio, or retreat.

Outside, the green-tiled pool reflects the sky and surrounding nature. Terraces invite long, unhurried days and evenings that arrive softly, without notice.

Private. Gated. 24-hour secure.

Six minutes to the AP-7.

Ten to San Pedro.

Fifteen to the Mediterranean, Marbella and Estepona

Thirty-five minutes to the airport (AGP)

Close when you need it. Far when you don't.

This is not luxury that demands attention. It is luxury you feel.

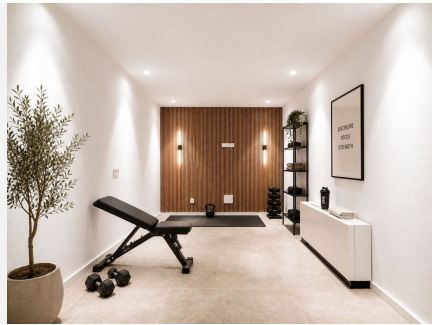
Space to breathe. Silence to settle. A home to return to — fully.

A rare place. For a deliberate life.

Enquire now to experience it in person.

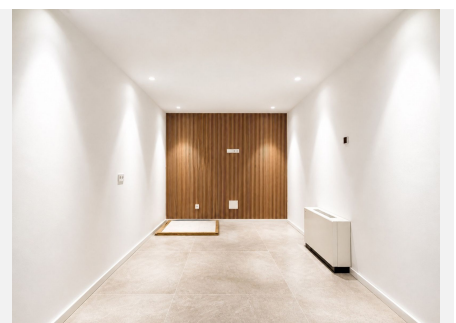
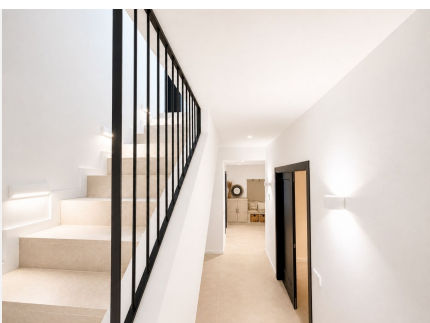
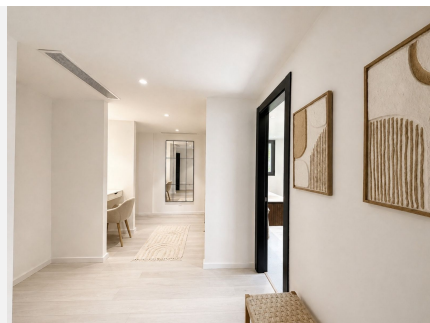
IDILIQ

ESTATES



IDILIQ

ESTATES



IDILIQ

ESTATES

