

# IDILIQ

ESTATES



R5370100

📍 La Cala Golf

REF# R5370100 2.900.000 €

BEDS

7

BATHS

6

BUILT

531 m<sup>2</sup>

PLOT

1308 m<sup>2</sup>

TERRACE

170 m<sup>2</sup>

Welcome to a truly spectacular luxury villa where exceptional design, effortless elegance, and the ultimate Costa del Sol lifestyle come together in perfect harmony.

Every inch of this extraordinary home has been meticulously designed with impeccable attention to detail, featuring interiors curated by one of Marbella's leading interior designers. Each room has its own personality, atmosphere, and story, creating a home that feels both luxurious and deeply inviting.

From the moment you enter, you are immediately drawn into the seamless flow of indoor and outdoor living. Expansive open-plan lounge and dining areas are flooded with natural light through dramatic floor-to-ceiling retractable windows, which disappear effortlessly into the walls to create a completely open connection to the stunning outdoor entertainment spaces.

Outside, a private oasis awaits. Beautiful landscaped gardens with mature palm trees, lush green lawns, and a sparkling swimming pool create the perfect backdrop for relaxing days in the sun or unforgettable evenings entertaining family and friends.

The designer kitchen is both stylish and functional, fitted with top-of-the-range Bosch appliances and perfectly positioned alongside the outdoor barbecue and entertainment terrace, making alfresco dining and hosting completely effortless.

+34 951 123 083 | +44 (0)330 179 8687 | [info@idiliqestates.com](mailto:info@idiliqestates.com) Local 28, Edificio D, Centro de Negocios Puerta de Banús, N-340, Km 175, 29660 Nueva Andalucía

# IDILIQ

ESTATES

On the main level, the villa also offers a beautifully appointed guest suite with ensuite bathroom and direct access onto the gardens, together with a stylish guest cloakroom.

Upstairs, three luxurious bedroom suites each enjoy their own private ensuite bathrooms and terraces overlooking the gardens, pool, and surrounding mountain scenery. Every detail throughout the home reflects quality craftsmanship and premium finishes, delivering the sophisticated lifestyle expected from a high-end contemporary villa.

The lower level of the property is nothing short of exceptional. Offering over 200m<sup>2</sup> of fully transformed luxury living space, this incredible area has been designed for pure enjoyment and entertainment. Here you will discover three additional bedrooms, two with ensuite bathrooms, a fully equipped private gym, and an absolutely stunning bespoke Prosecco bar — the ultimate social hub for entertaining in style.

A large designer lounge area with a 12-seater sofa creates the perfect cinema and relaxation space, ideal for gathering with friends and family after long sunny days on the Costa del Sol.

The villa is being sold fully furnished exactly as seen, including custom-made furniture, bespoke rugs, and carefully selected designer pieces throughout, offering a complete turnkey solution ready to be enjoyed immediately.

Practicality has also been carefully considered, with ample storage throughout the home, covered parking for two vehicles, and easy flat access directly into the property.

Perfectly positioned near the prestigious La Cala Golf Resort with its three championship 18-hole golf courses, the villa enjoys the tranquillity of the Andalusian countryside, surrounded by avocado orchards and fruit groves, whilst remaining only 10–15 minutes from the golden beaches and vibrant atmosphere of La Cala de Mijas. Marbella is just 30 minutes away, and Málaga Airport can be reached comfortably within 40 minutes.

This is far more than simply a home — it is a lifestyle experience designed for luxury living, entertaining, relaxation, and making unforgettable memories under the Mediterranean sun.

A truly outstanding turnkey villa that must be experienced to be fully appreciated.

Contact us today to arrange your private viewing — as always, viewings are available at your convenience.



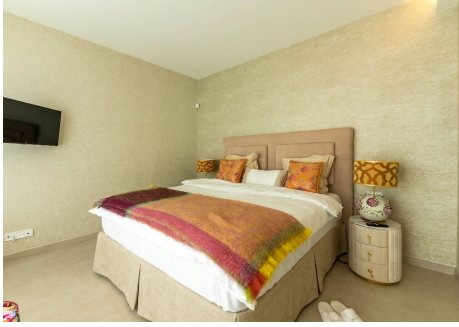
# IDILIQ

ESTATES



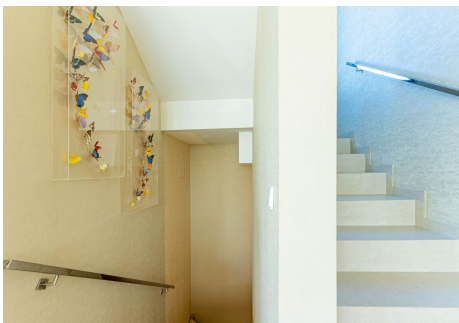
# IDILIQ

ESTATES



# IDILIQ

ESTATES



# IDILIQ

ESTATES



# IDILIQ

ESTATES



# IDILIQ

ESTATES

