



R5370055

📍 La Duquesa

REF# R5370055 360.000 €

BEDS

3

BATHS

2.5

BUILT

120 m²

TERRACE

30 m²

Elegant 3–4 Bedroom Townhouse in Exclusive DUQUESA GOLF VILLAS

Situated within the secure, gated community of Duquesa Golf Villas, this beautifully presented 3–4 bedroom townhouse offers the perfect blend of tranquility and convenience. Comprising just 40 homes, this highly sought-after urbanisation enjoys a peaceful setting while being only a comfortable 15-minute walk from the vibrant marina of Puerto de la Duquesa.

Arranged over three levels, the property welcomes you with a private front garden, off-road parking, and additional storage space. Upon entering, a spacious hallway leads to a fully fitted kitchen on the left and a bathroom on the right. The hallway opens into a bright and generous living and dining area, complete with sliding doors that lead to a newly covered, south-facing terrace—ideal for enjoying the sun and picturesque countryside views.

The first floor features three well-proportioned bedrooms, including a stunning master suite with a modern en-suite bathroom and walk-in shower. One of the bedrooms is currently styled as a dressing room. A

+34 951 123 083 | +44 (0)330 179 8687 | info@idiliqestates.com Local 28, Edificio D, Centro de Negocios Puerta de Banús, N-340, Km 175, 29660 Nueva Andlucia

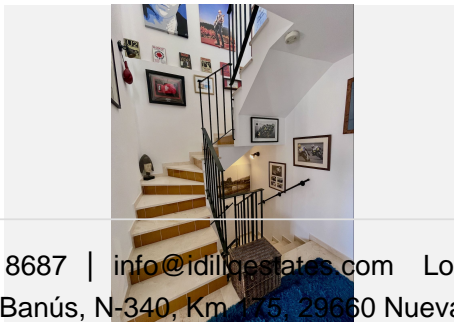
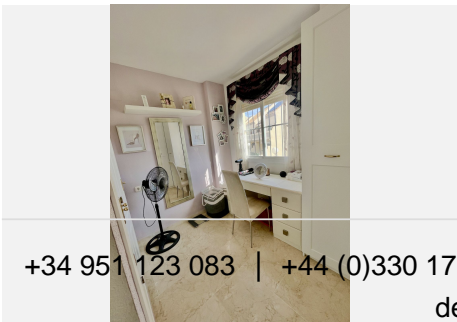
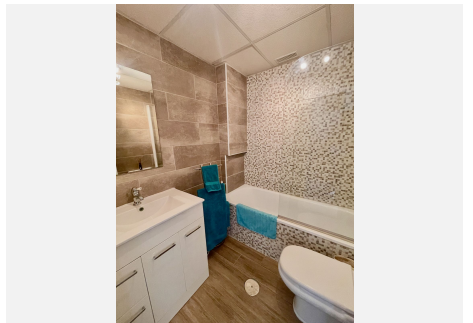
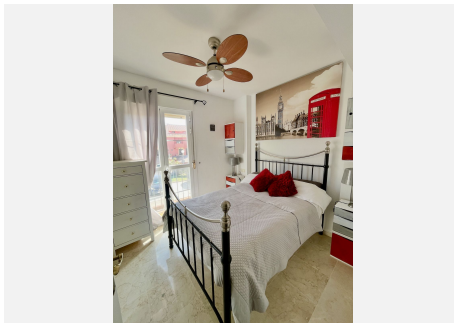
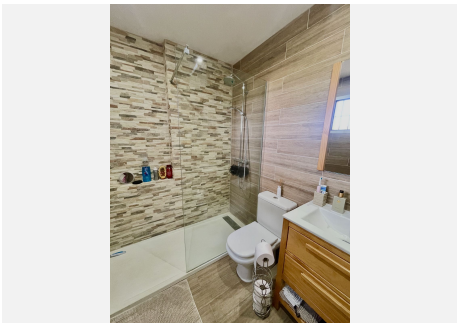
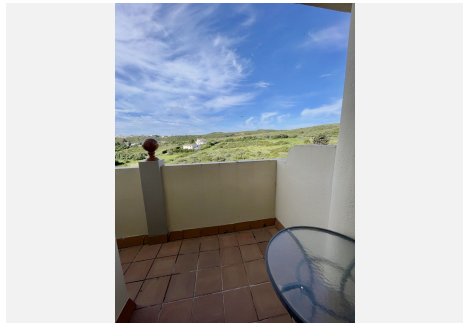
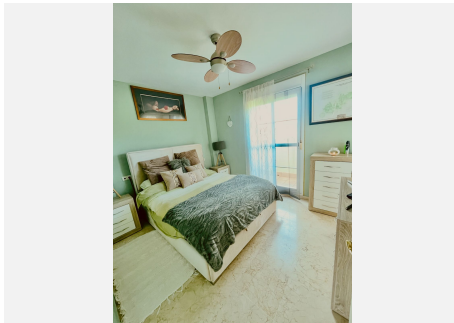
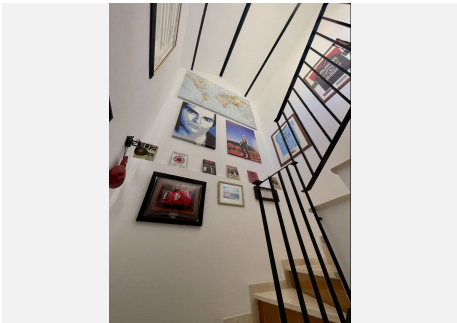
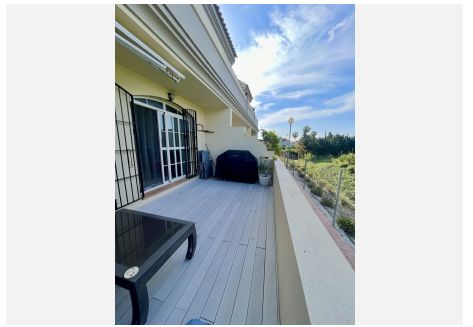
IDILIQ

ESTATES

separate guest bathroom with a bathtub and overhead shower serves the remaining rooms. The master bedroom also benefits from direct access to a private terrace—perfect for relaxed mornings.

The upper level offers versatile additional space, currently used as a gym and storage area, but easily adaptable as a fourth bedroom, office, or hobby room. This level leads out to a rooftop solarium, where you can enjoy peaceful views over one of the two communal swimming pools and the beautifully maintained grounds.

This exceptional property combines spacious living, flexible accommodation, and an enviable location—making it ideal as a permanent residence, holiday home, or investment opportunity.



IDILIQ

ESTATES

