



## MIDDLE FLOOR APARTMENT 2 BEDROOMS 2 BATHROOMS IN MANILVA

📍 Manilva

REF# R5367094 325.000 €

BEDS

2

BATHS

2

BUILT

79 m<sup>2</sup>

TERRACE

25 m<sup>2</sup>

Impressive 79 m<sup>2</sup> apartment set within an exclusive private gated community in the prestigious Princesa Kristina area (Manilva). The complex offers a secure and tranquil environment with well-maintained gardens and two communal swimming pools (one for adults and one for children). Being a third-floor unit, the property benefits from superior natural light, enhanced privacy, and the finest panoramic views in the area.

### Layout and Outdoor Spaces:

- **Main Terrace:** An oversized outdoor living area fitted with high-end Lumon glass curtains, accessible from both the living room and the master bedroom—perfect for a seamless indoor-outdoor lifestyle all year round.
- **Second Terrace:** A private retreat with direct access from the second bedroom, ideal as an independent relaxation area.
- **Interior:** Independent kitchen featuring a large adjoining utility room (for laundry, dryer, and storage), 2 double bedrooms with fitted wardrobes, and 2 full bathrooms (master ensuite).

### Key Features:

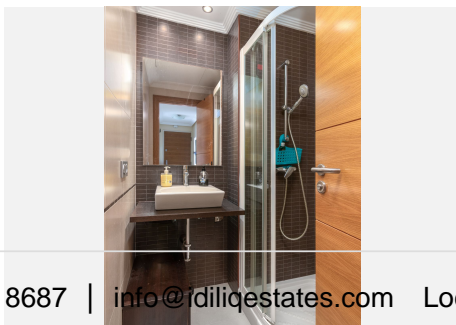
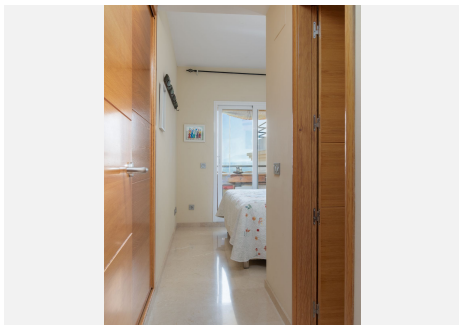
+34 951 123 083 | +44 (0)330 179 8687 | [info@idiliqestates.com](mailto:info@idiliqestates.com) Local 28, Edificio D, Centro de Negocios Puerta de Banús, N-340, Km 175, 29660 Nueva Andlucia

# IDILIQ

ESTATES

- Quality Finishes: Premium Lumon glass system, marble floors, hot & cold air conditioning, and electric blinds.
- Included Extras: The price includes a private parking space and a convenient storage room within the secure complex.
- Location: A strategic setting that balances the exclusivity of a private complex with proximity to local schools, transport links, and amenities.

A unique opportunity for those seeking an exclusive, move-in-ready home with the best outdoor spaces in the area. Don't miss out—schedule your viewing today!



# IDILIQ

## ESTATES

