

R5366218

 Costalita

REF# R5366218 895.000 €

BEDS

2

BATHS

2

BUILT

81 m²

TERRACE

19 m²

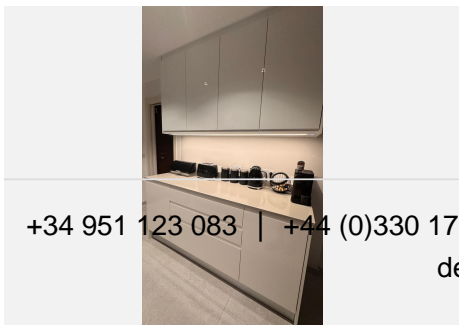
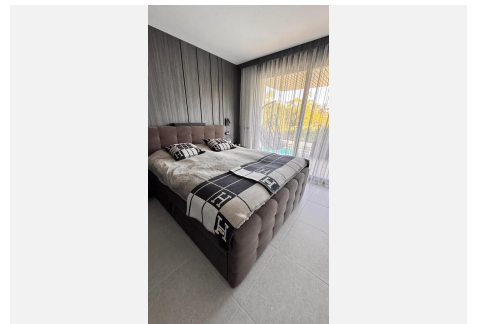
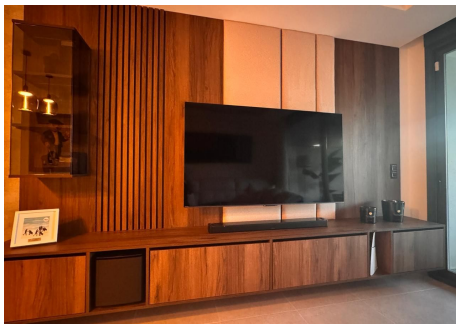
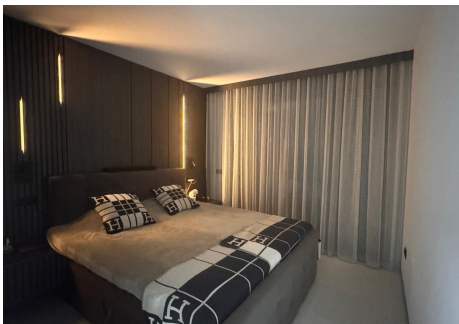
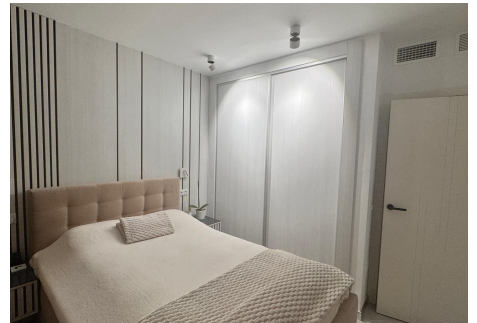
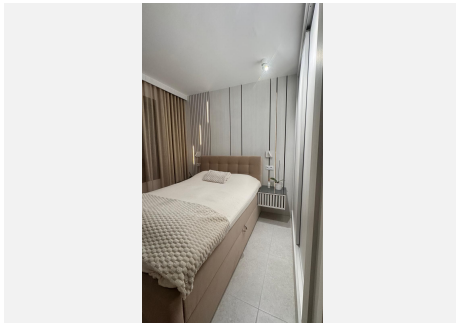
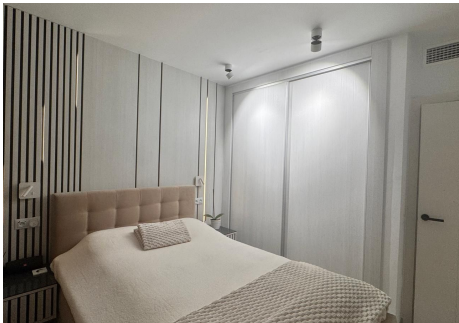
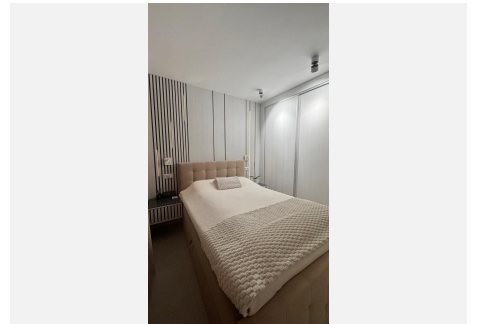
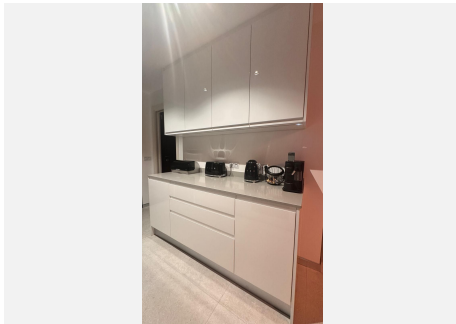
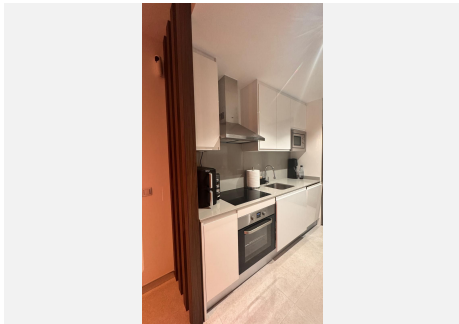
Amazing opportunity in Costalita in contemporary style , rare to get on the market . Just 250 meters from the sea on the beachside with sea views !

Two-bedroom apartment, fully furnished and equipped in a modern style, with furniture, appliances, and electronics. It's 250 meters from the sea and the promenade stretching all the way to Estepona. The modern building offers proximity to restaurants, a school, paddle tennis courts, Mercadona, and Lidl, all within a 300-500-meter radius. The nearest golf course, with a practice base and a driving range equipped with Trackman, is 6 km away – Atalaya Old and New Courses. A garage space with electric car charging and a storage unit is available. An outdoor swimming pool with sun loungers and a separate entrance is available. The only new, unique building in this area offers sea views, and all furniture, appliances, and accessories are included in the price. Intelligently controlled LED lighting, custom-made units, and completely updated bedroom and living room decor compared to the original build. The wardrobes, cabinets, and kitchen units have been modernized. A great base for exploring all the area's golf courses and attractions. Quiet and peaceful neighborhood

IDILIQ

ESTATES

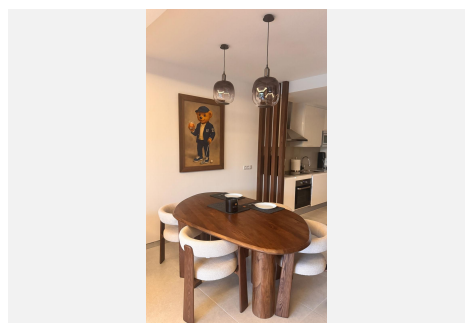
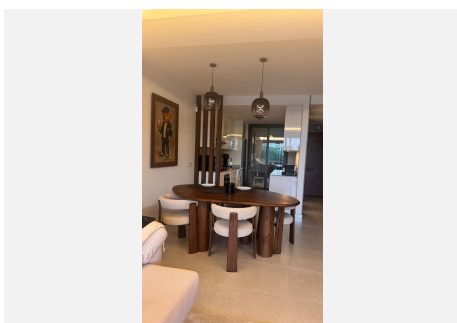
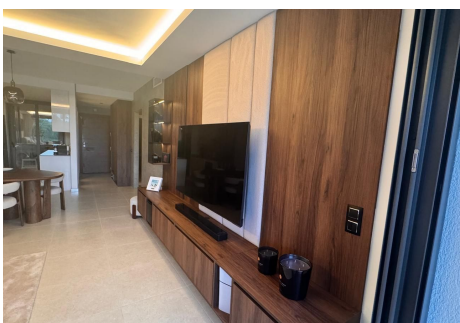
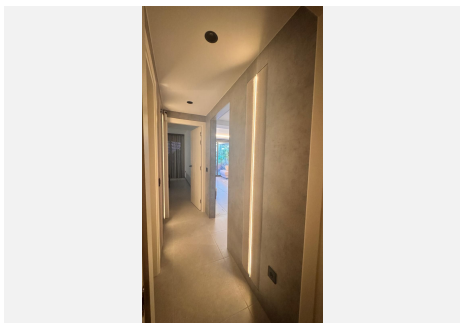
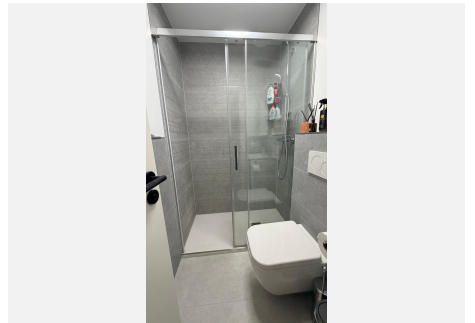
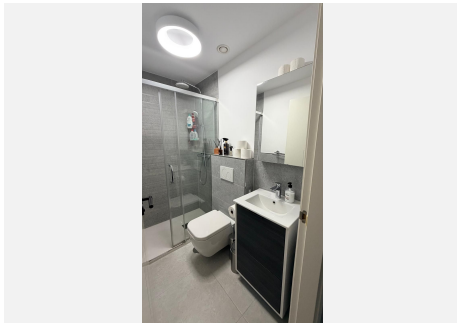
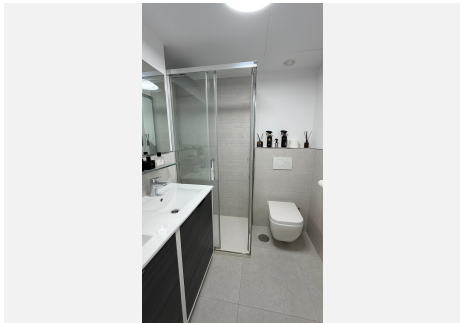
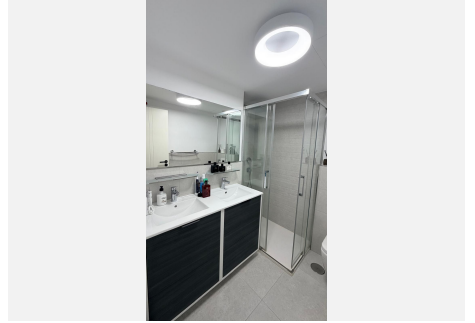
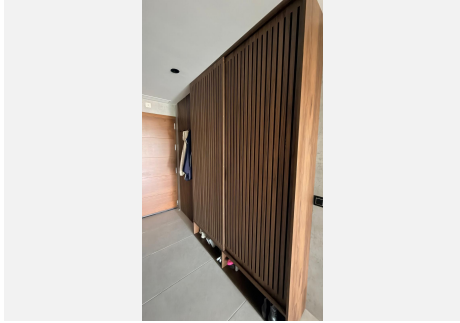
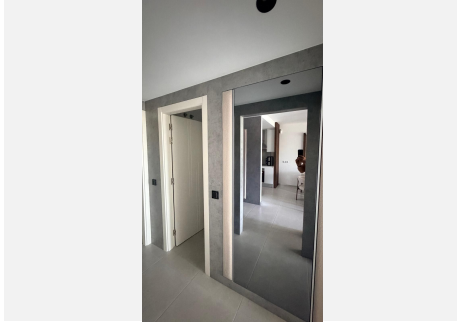
The excellent apartment right next to the sea! Beachside apartment as a second residence, investment or for permanent living.



+34 951 123 083 | +44 (0)330 179 8687 | info@idiliqestates.com - Local 28, Edificio D, Centro de Negocios Puerta de Banús, N-340, Km 175, 29660 Nueva Andalucía

IDILIQ

ESTATES



IDILIQ

ESTATES

