



R5364979

 Riviera del Sol

REF# R5364979 280.000 €

BEDS

2

BATHS

2

BUILT

90 m²

TERRACE

20 m²

FRONTLINE TO MIRAFLORES GOLF, THIS APARTMENT HAS AN ENVIABLE CORNER POSITION WITH PANORAMIC VIEWS ACROSS THE GOLF COURSE WITH A BACKDROP OF THE SIERRA DE MIJAS AS WELL AS THE MEDITERRANEAN SHIMMERING IN THE DISTANCE WHEN LOOKING FROM THE TERRACE.

SITUATED ON THE SECOND FLOOR WITH LIFT ACCESS, THE PROPERTY HAS TWO BEDROOMS, TWO BATHROOMS (ONE EN-SUITE), INDEPENDENT FULLY FITTED KITCHEN, GENEROUS OPEN PLAN LOUNGE AND DINING AREA WITH A LARGE CORNER TERRACE THAT HAS PLENTY OF SPACE FOR DINING AND RELAXING WHILST ENJOYING THE STUNNING VIEWS. THE TERRACE HAS BEEN GLAZED WITH GLASS CURTAINS TO CREATE A WINTER CONSERVATORY THAT CAN BE FULLY OPENED UP IN THE WARMER SUMMER MONTHS. BOTH BEDROOMS HAVE AMPLE FITTED WARDROBES AND THE MAIN BEDROOM ALSO LEADS OUT ONTO THE FABULOUS TERRACE.

SET ON A WELL MAINTAINED QUIET COMMUNITY WITH COMMUNAL POOL AND GARDENS. THE APARTMENT COMES WITH AN UNDERGROUND GARAGE SPACE, AGAIN WITH DIRECT LIFT ACCESS TO THE APARTMENT LEVEL.

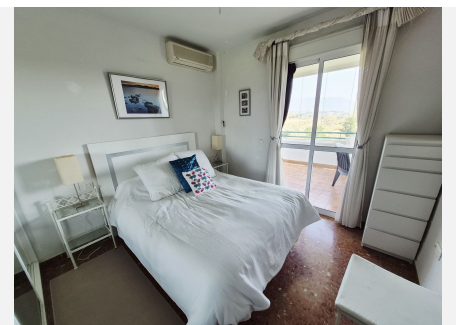
+34 951 123 083 | +44 (0)330 179 8687 | info@idiliqestates.com Local 28, Edificio D, Centro de Negocios Puerta de Banús, N-340, Km 175, 29660 Nueva Andlucia

IDILIQ

ESTATES

THE PROPERTY HAS BEEN OWNED FROM NEW BY THE SAME FAMILY AND ALTHOUGH MAINTAINED IN EXCELLENT CONDITION, THE PROPERTY WOULD BENEFIT FROM SOME UPDATING IF DESIRED.

GREAT PRICE, GREAT VIEWS, GREAT SPACE – MUST BE VIEWED TO APPRECIATE ALL THAT THE PROPERTY HAS TO OFFER!



IDILIQ

ESTATES

