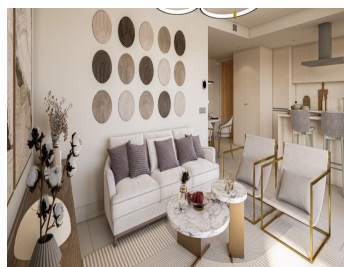
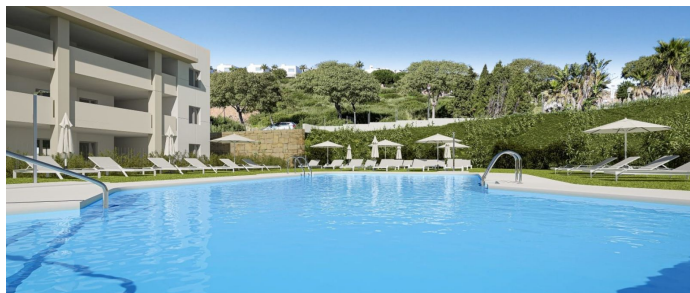


IDILIQ

ESTATES



R5362615

📍 Manilva

REF# R5362615 390.000 €

BEDS

2

BATHS

2

BUILT

82 m²

TERRACE

30 m²

A new residential development in Manilva, on the Costa del Sol, in the exclusive Bahía Las Rocas area. This is a privileged location between Punta Paloma and Chullera, known for its peaceful beaches, traditional beach bars, and the beautiful natural coastline with views of the Mediterranean Sea.

This project offers a choice of 2- and 3-bedroom apartments, designed to provide comfort, a great lifestyle, and sea views in unique Mediterranean surroundings.

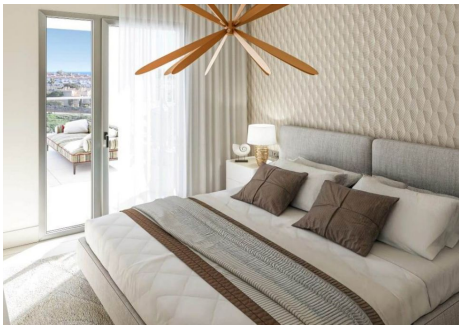
The apartments have 2 or 3 bedrooms and 2 full bathrooms. They are southeast or southwest facing, with many homes enjoying sea views, allowing you to admire the coastal scenery from your own home. Every home has a terrace, and some also have a garden or solarium, depending on the design project. There are penthouse apartments with solarium terraces available.

The communal areas are designed for relaxation, enjoying the outdoors, and spending quality time with the family. The development is a private community, with shared areas that include pools, multi-purpose community space (fitness lounge), and extensive gardens.

+34 951 123 083 | +44 (0)330 179 8687 | info@idiliqestates.com Local 28, Edificio D, Centro de Negocios Puerta de Banús, N-340, Km 175, 29660 Nueva Andalucía

IDILIQ

ESTATES



IDILIQ

ESTATES

