



R5361643

Torrequebrada

REF# R5361643 797.000 €

BEDS

3

BATHS

3

BUILT

136 m²

TERRACE

30 m²

Everything new, including kitchen, bathrooms, wooden floor in the bedrooms, windows with electric persiana-shutters, etc.

Luxury Duplex Penthouse for Sale in Torrequebrada, Benalmádena – Sea Views, 3 Terraces & Resort-Style Amenities

Discover this exceptional duplex penthouse for sale in Torrequebrada, Benalmádena, perfectly designed for modern family living on the Costa del Sol. Located just 600 meters from the beach and close to top international schools, this home combines lifestyle, comfort and prime location.

Set within a sought-after residential community, this property offers resort-style amenities, including a swimming pool, gym, (sauna), and paddle tennis court – ideal for a healthy Mediterranean lifestyle.

ASK THE AGENT FOR THE 3D VIRTUAL TOUR

Key Features:

- 3 spacious bedrooms
- 2 bathrooms + guest toilet + laundry room
- 3 private terraces with open views
- Open-plan kitchen, living & dining area
- 2 underground parking spaces
- Private storage room
- West-facing orientation with stunning sunsets

Interior & Layout

The property is thoughtfully distributed across two levels:

Main Level:

Welcoming entrance leading into a bright open-plan living, dining, and kitchen area, designed for effortless everyday living. From here, you access two terraces – perfect for outdoor dining and relaxing. A guest toilet and laundry room complete this level.

Upper Level:

Three well-appointed bedrooms:

Master bedroom with en-suite bathroom and fitted wardrobes.

Second bedroom with built-in double-wide bunk beds and wardrobe – ideal for children or guests – with access to the terrace.

Third bedroom with fitted wardrobe and access to the terrace.

Shared spacious bathroom for bedrooms two and three.

Lifestyle & Views

This home is all about light, space and tranquility. Enjoy panoramic views of the Mediterranean Sea and surrounding mountains, with spectacular sunsets from your private terraces.

Prime Location in Torrequebrada

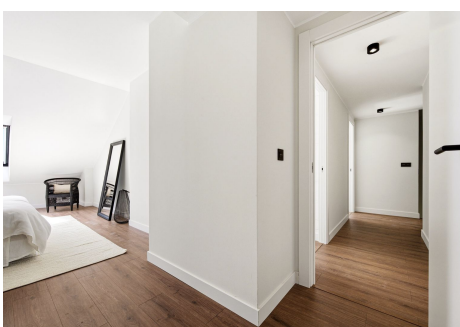
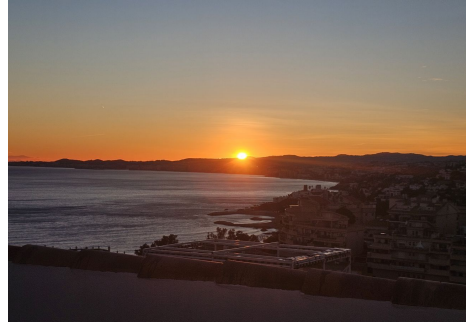
- 200 m to restaurants
- 600 m to the beach and Yucas Café & Bar
- 500 m to Mercadona, pharmacy & services
- 1 km to Trocadero Benalmádena
- 2.8 km to Torrequebrada Golf Club

This area is highly sought-after for its proximity to international schools, golf courses, beaches and amenities, making it ideal as a family home, holiday residence, or investment property.

If you're searching for a luxury penthouse in Benalmádena with sea views, outdoor living, and premium community facilities – this is the one.

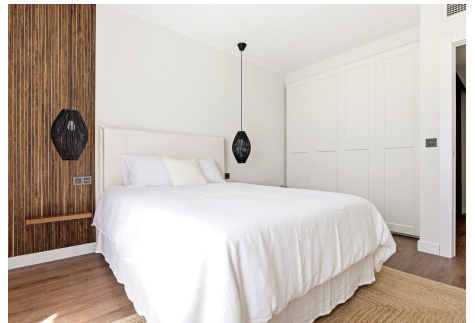
IDILIQ

ESTATES



IDILIQ

ESTATES



IDILIQ

ESTATES

