



MIDDLE FLOOR APARTMENT 2 BEDROOMS 2 BATHROOMS IN BENALMADENA COSTA

 Benalmadena Costa

REF# R5359276 529.000 €

BEDS

2

BATHS

2

BUILT

142 m²

SPECTACULAR BEACHFRONT APARTMENT IN ONE OF SPAIN'S BEST MARINAS, a dream location, ready to move in and enjoy, with every luxury detail. It features a stunning living room connected to a terrace enclosed with glass curtains for year-round enjoyment, an open-plan kitchen with a large breakfast bar, two double bedrooms and two bathrooms, plus a third guest bedroom. Located on the ground floor but with ample space, it's situated in the heart of Puerto Marina, next to the Yacht Club and surrounded by all kinds of amenities. It boasts enviable transport links, just 20 minutes from the airport and Malaga, 20 minutes from Fuengirola, and 35 minutes from Marbella. Ideal for both permanent residence and holidays. Opportunities to enjoy such an exclusive location are rare, surrounded by everything yet in a quiet and peaceful area, with a communal rooftop pool and sunbathing areas offering the best views of the coast and the marina.

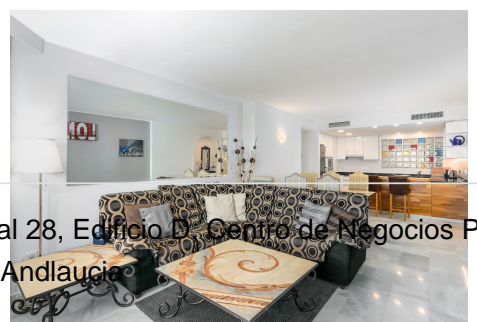
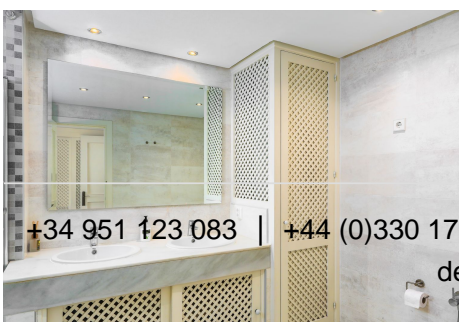
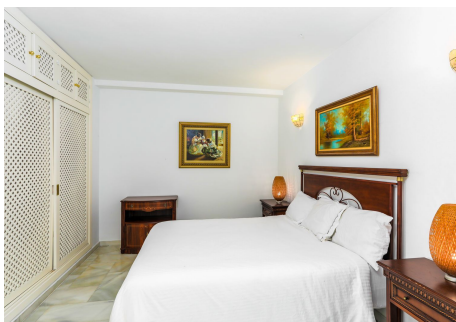
In compliance with Royal Decree 218/2005 of the Andalusian Regional Government, dated October 11, consumers are hereby informed that the prices indicated do not include expenses arising from the purchase

+34 951 123 083 | +44 (0)330 179 8687 | info@idiliqestates.com Local 28, Edificio D, Centro de Negocios Puerta de Banús, N-340, Km 175, 29660 Nueva Andlucia

IDILIQ

ESTATES

of real estate as per current legislation (Property Transfer Tax, notary fees, etc.). There are no real estate brokerage fees in addition to the sale price.



+34 951 123 083 | +44 (0)330 179 8687 | info@idiligestates.com Local 28, Edificio D, Centro de Negocios Puerta de Banús, Nº 24, Km 175, 29660 Nueva Andalucía

IDILIQ

ESTATES

