

R5358472

📍 Manilva

REF# R5358472 599.000 €

BEDS

2

BATHS

2

BUILT

143 m²

TERRACE

43 m²

! REDUCED PRICE ! PROTECTED PANORAMIC SEA VIEWS UNIT I TOURIST LISENCE

?OWN THE EDGE. LIVE THE VIEW. INVEST SMART. MOVE FROM THE CROWDED MARBELLA TO THE PEACE?

PRICE DROPPED DOWN! Enjoy your summer holiday and / or immediate passive income from this summer already.

Manilva, Costa del Sol | The New Gold Triangle | GIGA luxury projects are on the way to be ready in the area to increase ROI

Premium, new property with active Tourist license & income ready for sale. One of the best-positioned unit of this residence with panoramic sea views and privacy

If you're looking for a high premium, new apartment (2023) with guaranteed unbeatable panoramic sea views, strong rental potential (from 38.000€/yearly renting income) , and future-proof value in a fast-growing location , this is your ideal place.

+34 951 123 083 | +44 (0)330 179 8687 | info@idiliqestates.com Local 28, Edificio D, Centro de Negocios Puerta de Banús, N-340, Km 175, 29660 Nueva Andlucia

Strategically positioned between Estepona & Sotogrande, where ROI is accelerating and demand is outpacing supply. Giga luxury projects are on the way to increase massively the ROI in 2-4 years.

- ? 300m walk to the beach
- ? Mountain paths, dog park, parques, lifestyle amenities
- ? Seamless access to the A7
- ? Peaceful, green area

THE APARTMENT | New built to perform. This isn't just a home. It's a lifestyle asset.

- ? 2 Bedrooms | 2 Bathrooms | Living room with American kitchen and dining room area | All rooms have panoramic sea views with direct access to the terrace
- ? 99 m²+ of refined interior space
- ? Oversized 40 m²+ terrace with protected panoramic sea views
- ? Smart windows & shutters & mosquito nets
- ? App-controlled A/C system
- ? Whole-home water purification system
- ? Fitted wardrobes & and kitchen with home appliances
- ? Private garage & storage room
- ? Additional home water cleaning system
- ? Low community fees & IBI
- ? Premium interior design which can be an option for further negotiation (20.000eur)

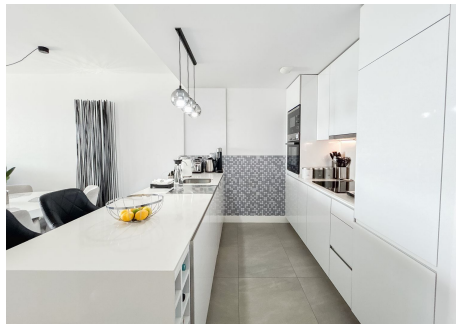
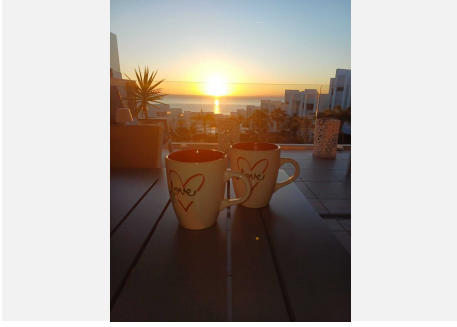
THE COMMUNITY | Wellness Resort-Level Living. Designed for long-term value, comfort, and sustainability.

- ? Solar panels & community water softener system
- ? 3 swimming pools (2 adults & 1 kid pool)
- ? Indoor & outdoor gym
- ? Sauna & steam room
- ? Playground & picnic area
- ? Chill-out zones & entertainment room
- ? Lush botanical gardens
- ? Security camera system
- ? Defibrillator in place
- ? Healthy reserve community funds

For full details and private appointment scheduling contact us.
Assets like this don't wait.

IDILIQ

ESTATES



IDILIQ

ESTATES

