

MIDDLE FLOOR APARTMENT 2 BEDROOMS 2 BATHROOMS IN BENAHAVÍS

 Benahavís

REF# R5357659 899.000 €

BEDS

2

BATHS

2

BUILT

112 m²

TERRACE

47 m²

This contemporary apartment is ideally located in the sought-after Aqualina development, in the heart of Nueva Andalucía's prestigious Golf Valley.

Perfectly positioned, the property offers excellent connectivity—just minutes from the A-397 road to Ronda, with local commercial centres less than 5 minutes away. San Pedro town and the beach are approximately 10 minutes away, while Puerto Banús can be reached in under 15 minutes.

The apartment features a spacious and light-filled living and dining area with an open-plan kitchen, fully equipped with high-quality Bosch and Miele appliances. Large sliding doors lead directly onto a sunny south-facing terrace, offering stunning panoramic sea views—perfect for relaxing or entertaining.

This well-presented property comprises two bedrooms and two bathrooms, and benefits from individually controlled underfloor heating and air conditioning throughout, ensuring year-round comfort.

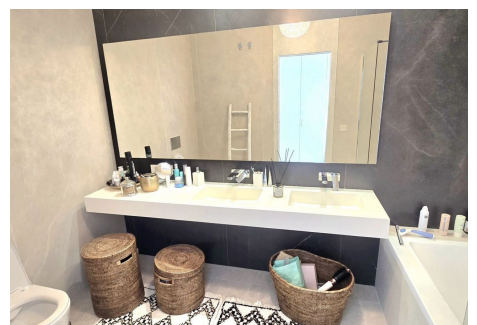
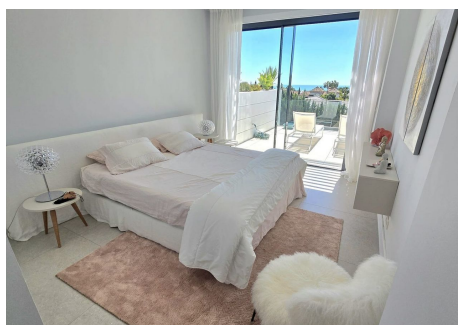
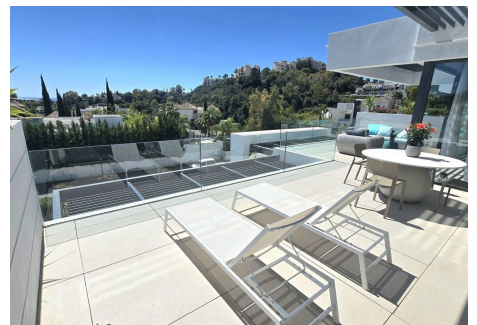
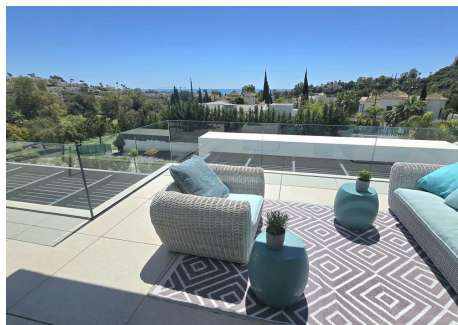
IDILIQ

ESTATES

The community offers excellent resort-style facilities, including two swimming pools, a children's pool, a fully equipped gym, Jacuzzi, sauna, and concierge service.

An underground parking space is included, with pre-installation for an electric vehicle charging point.

This apartment represents an ideal opportunity as a permanent residence, holiday home, or investment in one of Marbella's most desirable locations.



IDILIQ

ESTATES

