



GROUND FLOOR APARTMENT 2 BEDROOMS 2 BATHROOMS IN ALOHA

 Aloha

REF# R5354917 465.000 €

BEDS	BATHS	BUILT	PLOT	TERRACE
2	2	99 m ²	150 m ²	20 m ²

A pristine 2 bed ground floor apartment in Aloha gardens within the secure Gated community with 24 hour security this property is close by golf courses , shops and restaurants. It has been recently reformed and has bright new American style kitchen opening onto a large living / dining room thats also opens onto a large covered terrace overlooking a large wrap around private garden. There is masterbedroom with ensuite bathroom and a further guest room with a seperate guest showeroom ,you have ducted hot and cold air conditing throughout you also have easy access to the private garage space ,storeroom , and all the landscaped gardens and communal pools of the complex . 2 bed Ground Floor Apartment, Aloha, Costa del Sol.

2 Bedrooms, 2 Bathrooms, Built 99 m², Terrace 20 m², Garden/Plot 150 m².

Setting : Close To Golf, Close To Port, Close To Shops, Close To Sea, Close To Town, Close To Schools, Close To Marina, Urbanisation.

Orientation : North.

+34 951 123 083 | +44 (0)330 179 8687 | info@idiliqestates.com Local 28, Edificio D, Centro de Negocios Puerta de Banús, N-340, Km 175, 29660 Nueva Andlucia

IDILIQ

ESTATES

Condition : Excellent, Recently Renovated.

Pool : Communal.

Climate Control : Air Conditioning, Cold A/C.

Views : Garden.

Features : Covered Terrace, Fitted Wardrobes, Near Transport, Private Terrace, Storage Room, Ensuite Bathroom, Marble Flooring.

Furniture : Not Furnished.

Kitchen : Fully Fitted.

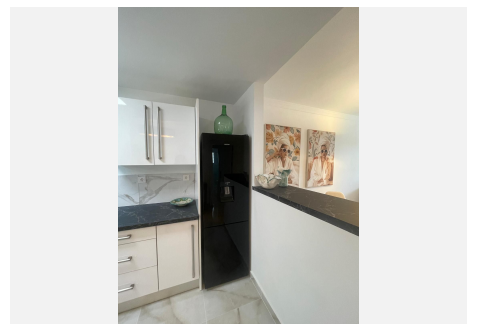
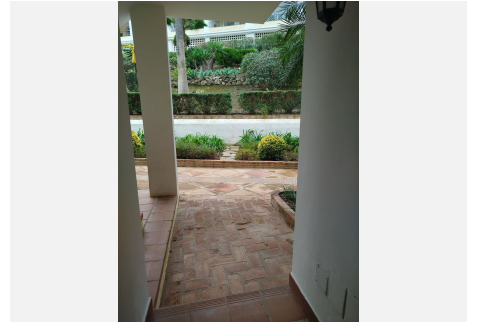
Garden : Communal, Private.

Security : Gated Complex, Entry Phone, Alarm System.

Parking : Underground, Garage.

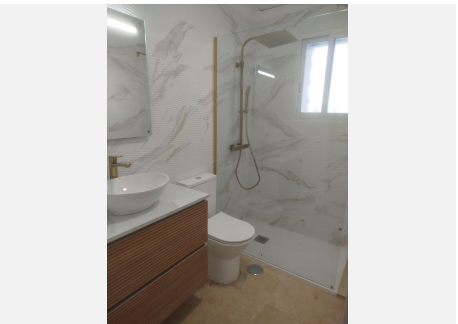
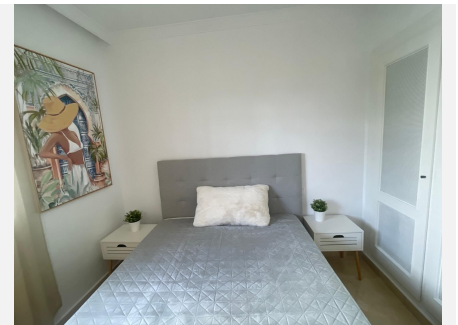
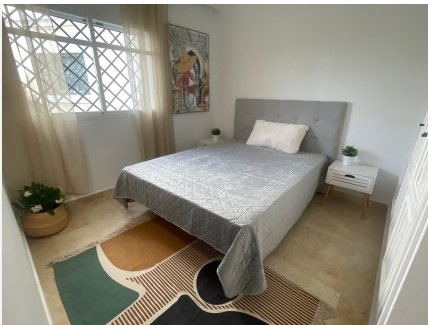
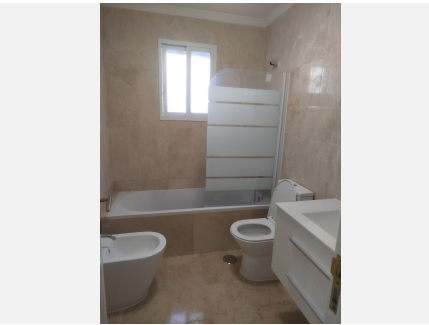
Utilities : Electricity.

Category : Resale.



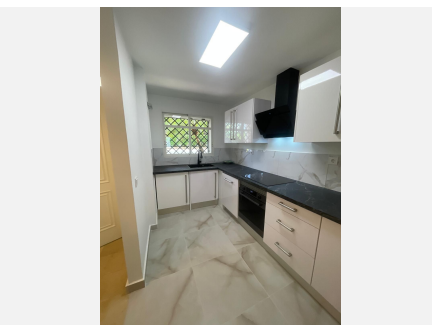
IDILIQ

ESTATES



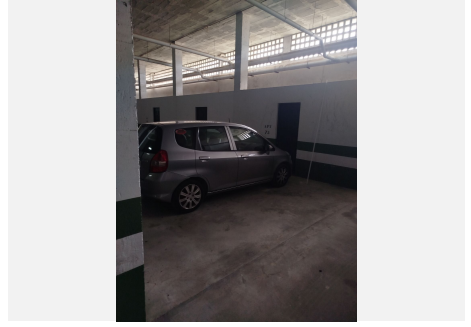
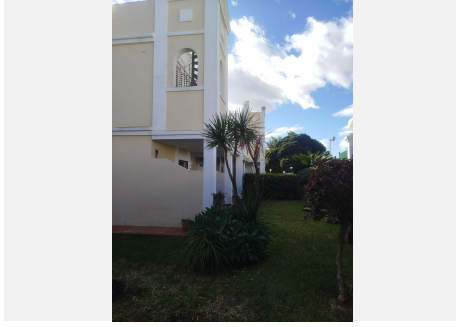
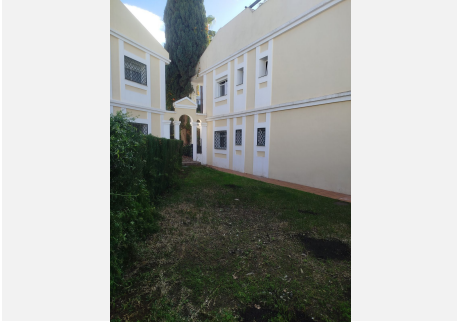
IDILIQ

ESTATES



IDILIQ

ESTATES



IDILIQ

ESTATES

