



## MIDDLE FLOOR APARTMENT 2 BEDROOMS 2 BATHROOMS IN BENAHAVÍS

 Benahavís

REF# R5351542 650.000 €

BEDS

2

BATHS

2

BUILT

102 m<sup>2</sup>

TERRACE

25 m<sup>2</sup>

Middle Floor Golf Apartment – Benahavís (Atalaya Hills)

Avant-garde apartment by Villarroel-Torrico, frontline to Atalaya Golf with breathtaking south-facing panoramic views over golf and lake.

Located in the exclusive gated community of La Alquería, Benahavís, just 6 min Puerto Banús, 15 min Marbella and 2 min from shops & international school.

Bright living area with high ceilings and large sliding doors opening onto a spacious terrace.

Fully fitted designer kitchen, elegant master suite with Porcelanosa bathroom, underfloor heating and massage bath. Guest bedroom with ensuite.

Set within lush tropical gardens, Atalaya Hills offers a pool with chiringuito, Technogym gym, spa with sauna & hammam, and 24h security.

Prime golf location. Panoramic views. Turnkey luxury.

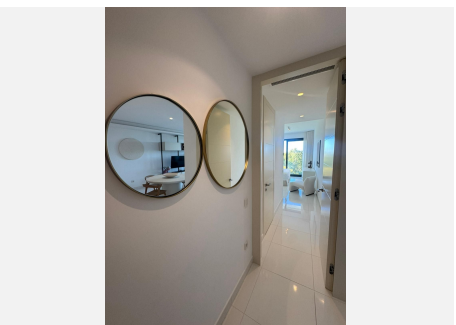
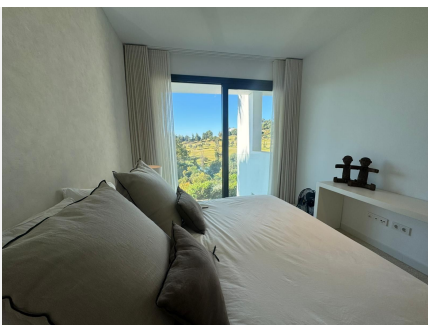
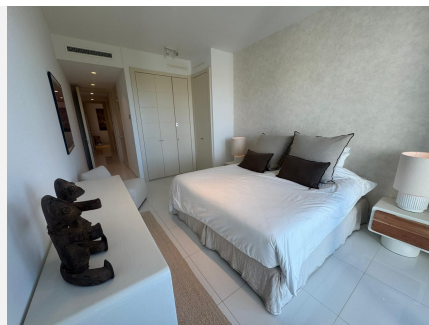
Furniture optional 35000€

"In compliance with Decree 218/2005 of the Andalusian Regional Government of October 11, we inform you  
 +34 951 123 083 | +44 (0)330 179 8687 | info@idiliqestates.com Local 28, Edificio D, Centro de Negocios Puerta  
 de Banús, N-340, Km 175, 29660 Nueva Andlucia

# IDILIQ

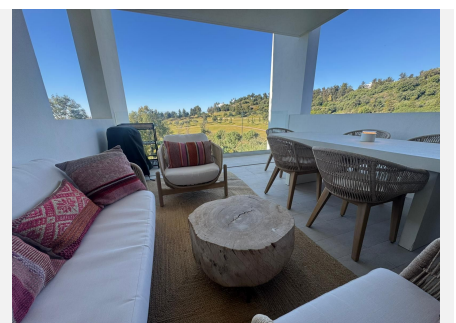
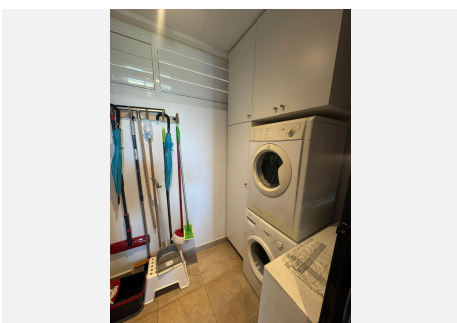
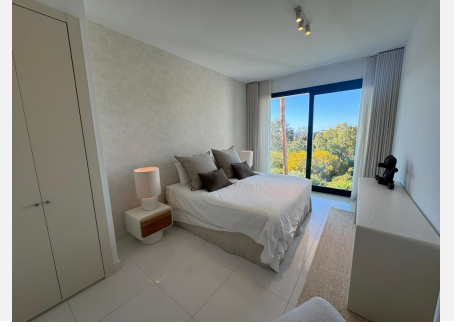
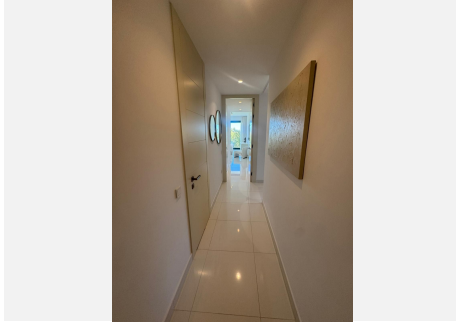
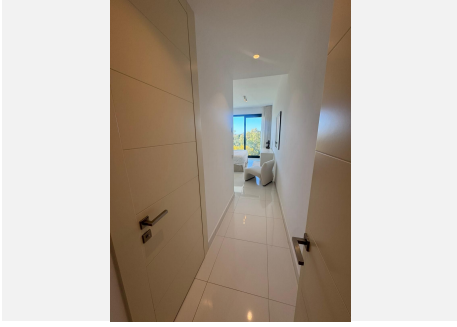
ESTATES

that notary, registry, transfer tax (ITP), and other expenses related to the purchase are not included in the price. The information provided is for guidance only, is not binding, and has no contractual value. The offer is subject to errors, price changes, availability, and/or withdrawal from the market without prior notice. This information may have been modified but not yet updated. We recommend contacting the agency to obtain the most recent details and/or to confirm the information provided here."



# IDILIQ

ESTATES



# IDILIQ

ESTATES



# IDILIQ

ESTATES

