

# IDILIQ

ESTATES



R5344192

 Benahavís

REF# R5344192 3.485.000 €

BEDS

4

BATHS

4

BUILT

667 m<sup>2</sup>

PLOT

2210 m<sup>2</sup>

TERRACE

93 m<sup>2</sup>

An exceptional south-facing villa, exquisitely modernised, occupying a privileged second-line golf position in El Paraíso, offering breathtaking 180-degree panoramic views across the golf course to the Mediterranean Sea and the North African coastline.

Originally built in 1980 and thoughtfully reimagined, this elegant single-level residence combines timeless Andalusian charm with refined contemporary living. Set within high perimeter walls, the property ensures complete privacy and security, with a distinguished pedestrian entrance and two automated wooden gates leading to a spacious courtyard and a three-car garage.

At the heart of the home lies a magnificent open-plan living area, bathed in natural light and seamlessly connected to the landscaped gardens and pool. Expansive sliding doors open onto a generous covered terrace spanning the entire length of the villa, creating a sophisticated indoor-outdoor lifestyle ideal for year-round enjoyment. The depth of the terrace allows for optimal airflow, enhancing comfort during the warmer months.

+34 951 123 083 | +44 (0)330 179 8687 | [info@idiliqestates.com](mailto:info@idiliqestates.com) Local 28, Edificio D, Centro de Negocios Puerta de Banús, N-340, Km 175, 29660 Nueva Andalucía

The interiors are finished with Belgian-sourced wood parquet flooring, offering both warmth and elegance while maintaining excellent thermal comfort. Climate control is ensured through discreet split air-conditioning systems, providing both heating and cooling.

The designer kitchen, curated by a professional chef, is both functional and refined. Featuring premium AEG appliances, a Samsung American-style fridge, dual sinks, and bespoke floor-to-ceiling cabinetry, the space is illuminated by a skylight and flows effortlessly into a spacious dining area with direct terrace access.

The villa is intelligently divided into distinct wings. The guest wing comprises three beautifully appointed bedrooms, each with built-in wardrobes and luxurious en-suite bathrooms, offering privacy and comfort for family and visitors.

In the east wing, a bespoke acoustically engineered music and cinema room, designed by the architect owner, delivers an extraordinary audio experience, rivaling world-renowned recording studios. From here, a staircase leads to a spectacular roof terrace, where uninterrupted views stretch from the golf course to the sea, framed by mountain views.

The master suite is a sanctuary of tranquillity, featuring floor-to-ceiling picture windows, direct access to the terrace and garden, a fully fitted dressing room, and a luxurious en-suite bathroom complete with a freestanding bath, walk-in shower, and double vanity, finished with handcrafted details by Belgian artisans.

Additional features include a separate garden-facing office pavilion, a multi-functional annex with office, library, gym, and storage, all fitted with high-performance Schüco double glazing and climate control.

The landscaped grounds are equally impressive, featuring a freeform kidney-shaped swimming pool, mature gardens, and a private area for cultivating fruit and vegetables, enhancing the estate's charm and lifestyle appeal.

Designed with both elegance and practicality in mind, the property also caters to car enthusiasts with a fully equipped garage featuring ambient lighting and integrated power points.

A rare opportunity to acquire a refined and private golf-front residence that perfectly captures the essence of sophisticated Mediterranean living.

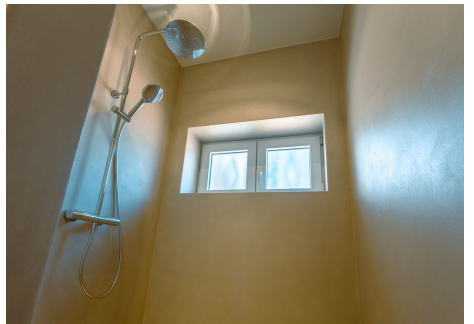
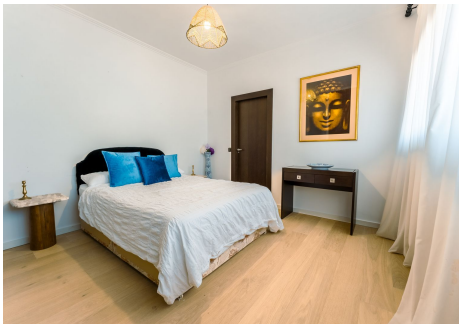
# IDILIQ

ESTATES



# IDILIQ

ESTATES



# IDILIQ

ESTATES



# IDILIQ

ESTATES

