



R5338036

📍 San Pedro de Alcántara

REF# R5338036 430.000 €

BEDS

4

BATHS

2

BUILT

216 m<sup>2</sup>

This beautiful semi-detached home, set in a peaceful residential area of San Pedro, offers a private entrance and thoughtfully designed spaces for modern living.

The ground floor welcomes you with a charming entrance patio, leading to the first floor's expansive living-dining area, complete with a cozy fireplace. The fully equipped kitchen includes a convenient laundry area, while three well-proportioned bedrooms feature fitted wardrobes—one opening onto a versatile terrace, perfect as a home office or playroom.

The second floor boasts a private bedroom with direct access to a spectacular open terrace, featuring an outdoor kitchen, solarium, and a dedicated space for solar panels—an ideal setting for entertaining or unwinding under the stars.

Designed for families or anyone seeking generous living space, this meticulously maintained home offers four spacious bedrooms and two contemporary bathrooms. Crafted with high-quality materials, it provides excellent acoustic insulation, efficient air conditioning for hot and cold climates, solar-heated water, and a

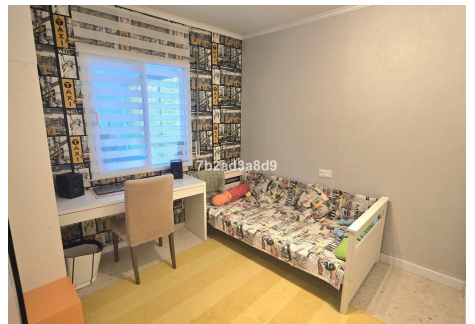
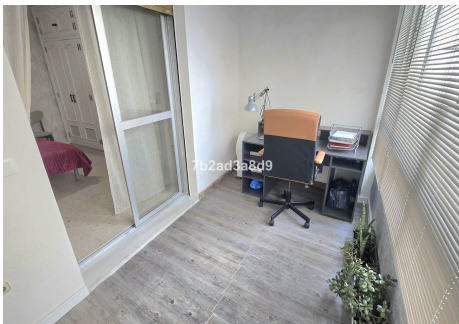
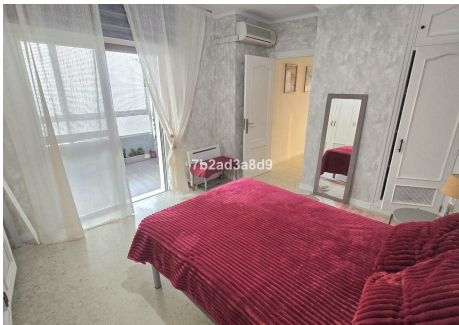
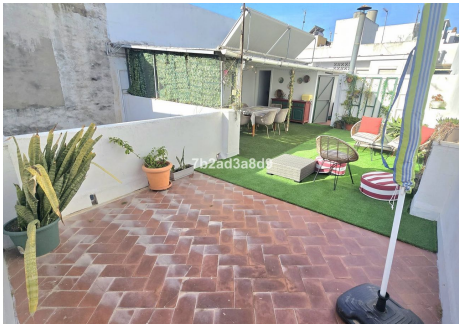
+34 951 123 083 | +44 (0)330 179 8687 | info@idiliqestates.com Local 28, Edificio D, Centro de Negocios Puerta de Banús, N-340, Km 175, 29660 Nueva Andlucia

# IDILIQ

ESTATES

warm, inviting fireplace in the living area.

Enjoy unmatched convenience with Mercadona, Lidl, Aldi, Supeco, a sports center, top schools, and a variety of charming cafés and restaurants just a two-minute walk away.



# IDILIQ

ESTATES

