



R5325274

📍 Atalaya

REF# R5325274 850.000 €

BEDS

3

BATHS

4

BUILT

153 m<sup>2</sup>

PLOT

60 m<sup>2</sup>

TERRACE

55 m<sup>2</sup>

**\*\*Townhouse in Atalaya, Estepona – €850,000\*\***

Discover this stunning newly built townhouse in the heart of Atalaya, on Estepona's New Golden Mile. This modern and functional home is located in a quiet residential complex, ideal for enjoying peace and comfort. With a smart layout on four levels, it includes a spectacular rooftop solarium, perfect for relaxing and enjoying the Mediterranean climate.

With 180 m<sup>2</sup> of built area and 160 m<sup>2</sup> of usable space, this property has 3 to 4 bedrooms, making it a versatile option for families or as an investment. The spacious living-dining room with integrated kitchen offers a bright and welcoming space, while the large terraces and private garden are perfect for enjoying the outdoors. In addition, the aerothermal system with underfloor heating ensures optimal comfort throughout the year.

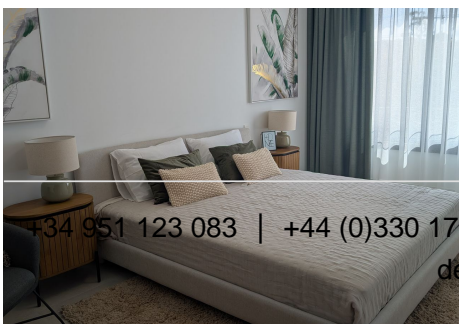
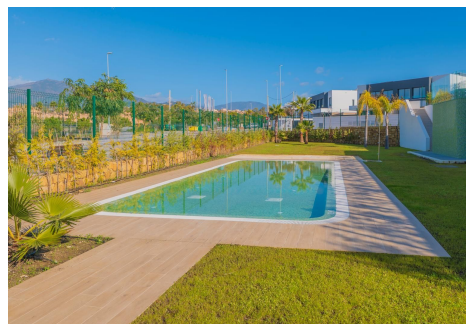
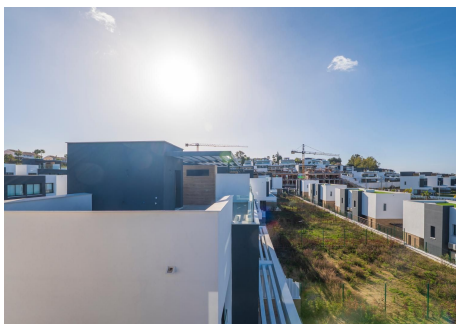
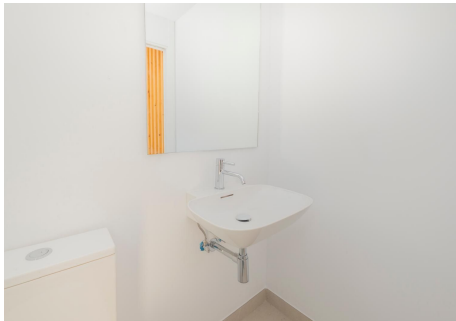
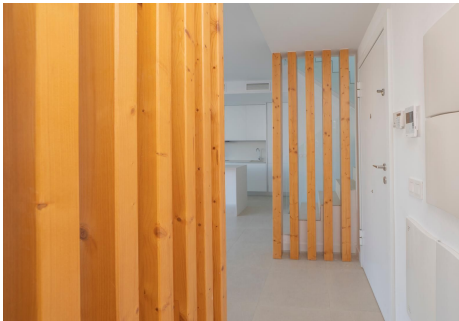
Located between Marbella and Estepona, this house is close to golf courses, international schools, and all necessary amenities. It also has private parking for two cars and access to a community pool. This property

+34 951 123 083 | +44 (0)330 179 8687 | info@idiliqestates.com Local 28, Edificio D, Centro de Negocios Puerta de Banús, N-340, Km 175, 29660 Nueva Andalucía

# IDILIQ

ESTATES

is suitable for people with reduced mobility and complies with energy efficiency standards, ensuring low consumption. Don't miss the opportunity to make this place your new home!



+34 951 123 083 | +44 (0)330 179 8687 | [info@idiliquestates.com](mailto:info@idiliquestates.com) Local 28, Edificio D, Centro de Negocios Puerta de Banús, N-340, Km 175, 29660 Nueva Andalucía

# IDILIQ

ESTATES

