

R5324500

📍 Benahavís

REF# R5324500 320.000 €

BEDS

2

BATHS

2

BUILT

75 m²

TERRACE

15 m²

A beautifully presented 2 bedroom ground floor apartment in immaculate decorative condition, offering generous interior space, a private terrace, secure parking, and a full range of practical features for comfortable everyday living. Fully ready to move into, this home combines quality, convenience, and lifestyle appeal in one of the Costa del Sol's most desirable municipalities. Priced at €320,000, it represents outstanding value in Benahavís.

Key Property Features

- 2 bedrooms and 2 bathrooms, designed for comfort and privacy
- Built in wardrobes providing excellent storage
- 75 m² internal living space, creating a bright, spacious feel
- 15 m² private glass enclosed terrace, ideal for outdoor dining and relaxation
- Total size: 90 m², offering more space than many comparable apartments
- Fully equipped kitchen, perfect for immediate use
- Utility room and separate drying area, adding everyday practicality
- Ground floor layout with easy access and seamless indoor-outdoor flow
- Private parking space included, ensuring convenience and security

IDILIQ

ESTATES

- Immaculate decorative condition, maintained to an exceptional standard
- Ready to move into, ideal for immediate occupancy or rental use
- Built in 2006, with solid Mediterranean construction and styling

Lifestyle & Amenities Through Benahavís Town Hall. Residents enjoy access to an impressive range of municipal sports and leisure facilities, enhancing both lifestyle and value:

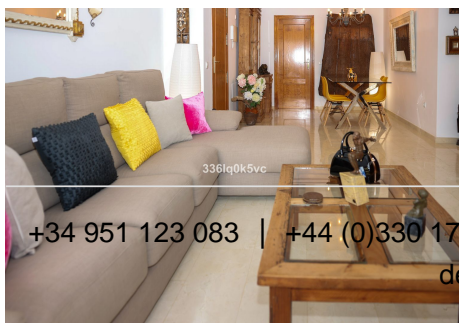
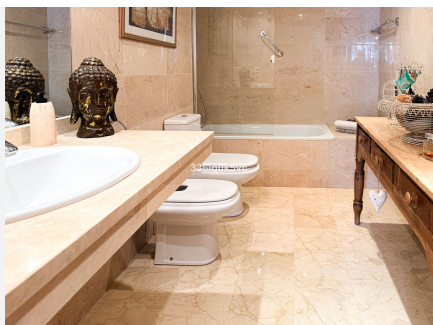
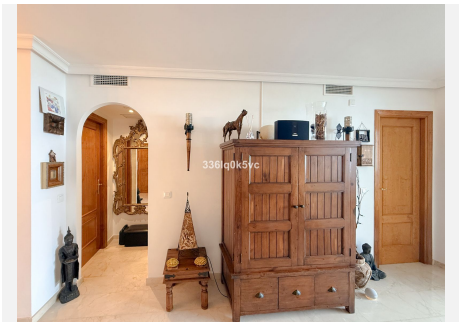
- Padel courts
- Tennis courts
- Driving range for golf practice
- Swimming pool
- Additional community sports and recreational activities

These amenities make Benahavís especially appealing for active residents, families, and holidaymakers.

Benahavís is renowned for its natural beauty, exclusive residential areas, and exceptional dining. It offers a tranquil lifestyle while remaining close to the coast and key destinations:

- 10–15 minutes to Marbella and Puerto Banús
- Surrounded by top golf courses including Los Arqueros, La Quinta, and El Higueral
- Easy access to beaches, supermarkets, international schools, and daily amenities
- A secure, well maintained area popular with international buyers

This apartment blends the calm, scenic charm of Benahavís with the convenience of being just a short drive from the vibrant energy of Marbella and the coast.



IDILIQ

ESTATES

