



R5322985

 Benalmadena

REF# R5322985 1.150.000 €

BEDS

3

BATHS

2

BUILT

159 m²

TERRACE

51 m²

Spectacular Duplex Penthouse with Panoramic Sea Views in Exclusive Stupa Hills, Benalmádena

Located in the prestigious Stupa Hills urbanisation in Benalmádena, next to the iconic Buddhist Stupa, this exceptional duplex penthouse offers breathtaking sea views, abundant natural light, and an elegant contemporary design. With expansive floor-to-ceiling windows and a wide orientation, the property is bathed in natural light throughout the day and enjoys panoramic views stretching across the Mediterranean.

Upon entering the property, you are welcomed by an elegant entrance hall that opens into a spacious and bright open-plan living and dining area. The sophisticated Italian-designed kitchen is fully fitted and equipped with high-end appliances, including a reverse osmosis water filtration system. Large sliding windows from the living area lead directly to a generous terrace where you can enjoy stunning sea views and outdoor living.

This level also features two well-appointed bedrooms, each with elegant Italian-designed built-in wardrobes with sliding doors, as well as a stylish bathroom.

IDILIQ

ESTATES

A striking modern staircase crafted from metal, wood, and glass leads to the upper floor, dedicated to the impressive master suite. Here you will find a spacious bedroom with direct access to a second private terrace boasting spectacular panoramic sea views. The master level also includes a walk-in wardrobe, a luxurious en-suite bathroom, and a practical laundry and drying area.

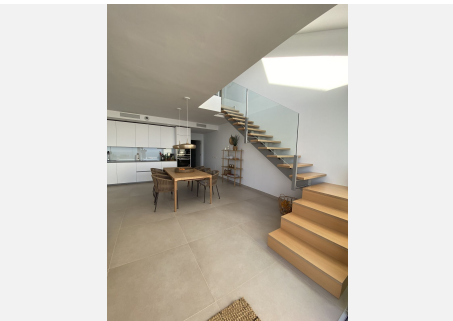
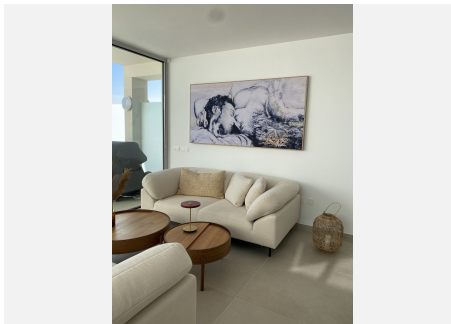
The property is equipped with an advanced aerothermal system and individual room-by-room climate control (hot and cold), all managed through a smart home automation system for maximum comfort and efficiency. The apartment also includes two underground parking spaces and a private storage room of 8 m².

Residents of Stupa Hills enjoy access to a secure, gated community with premium resort-style facilities, including two outdoor swimming pools, a fully equipped fitness centre, a heated indoor pool, as well as both Finnish and Turkish saunas.

The location is truly unbeatable. A supermarket is conveniently located next to the urbanisation, while the nearby Higuerón Shopping Centre offers a supermarket, pharmacy, restaurants, and a variety of shops just minutes away. Excellent transport connections provide easy access to the A-7 motorway, making travel along the Costa del Sol effortless. The beach is only an 8-minute drive, and the charming Andalusian village of Benalmádena Pueblo can be reached in just 5 minutes.

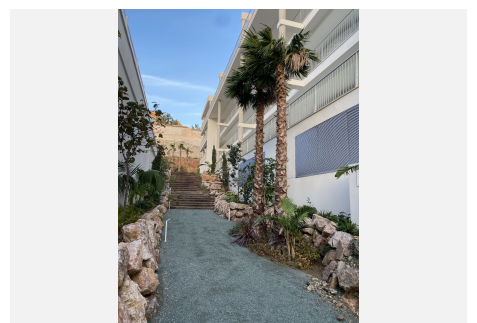
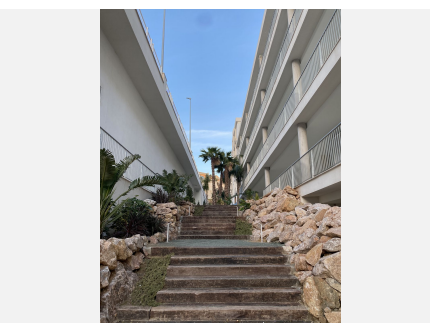
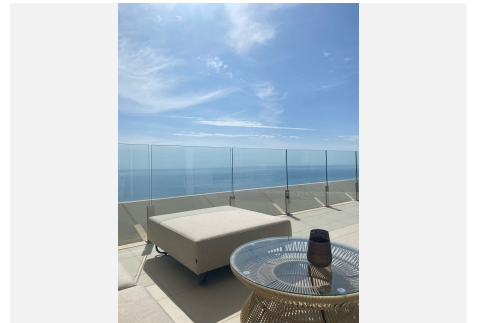
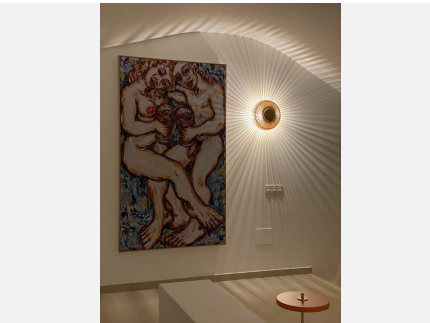
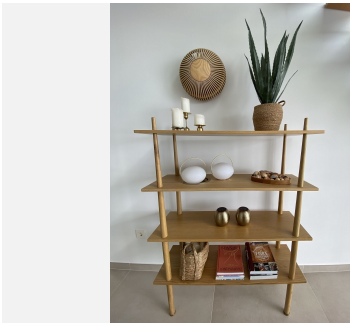
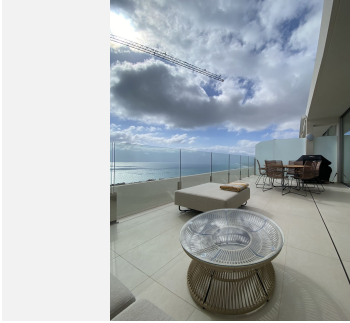
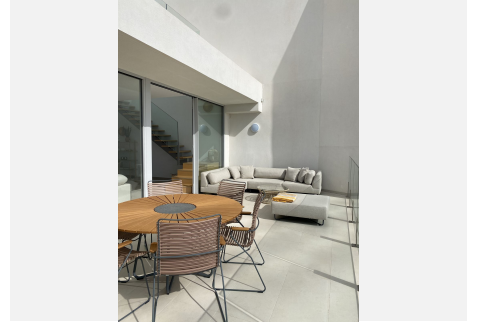
This is a unique opportunity to own a luxurious penthouse in one of the most sought-after developments on the Costa del Sol, combining modern comfort, stunning views, and an exceptional lifestyle.

This property has a tourist license.



IDILIQ

ESTATES



IDILIQ

ESTATES

