



## GROUND FLOOR APARTMENT 3 BEDROOMS 3 BATHROOMS IN NUEVA ANDALUCÍA

 Nueva Andalucía

REF# R5309887    1.350.000 €

BEDS

3

BATHS

3

BUILT

140 m<sup>2</sup>

TERRACE

90 m<sup>2</sup>

Apartment Vista Lago — Completely renovated luxury 3-bedroom apartment with private pool, BBQ area, and lake & mountain views in Nueva Andalucía

Nestled within the prestigious gated community of Palacetes Los Belvederes in Nueva Andalucía, Apartment Vista Lago offers an exceptional blend of modern luxury, privacy, and breathtaking scenery.

Fully renovated in 2025, this elegant southeast-facing ground-floor apartment combines contemporary design with spacious indoor and outdoor living. With 230 m<sup>2</sup> built area, including 140 m<sup>2</sup> of refined interior space and a stunning 90 m<sup>2</sup> private terrace and garden, the property enjoys uninterrupted panoramic views across the lake toward La Concha mountain and the Mediterranean Sea.

The apartment features three spacious bedrooms, two with en-suite bathrooms, an additional bathroom, and a guest toilet. Designed by the award-winning Studio Marbella / Amura Interiors, the home combines high-

end finishes with functional elegance. Large floor-to-ceiling windows flood the interior with natural light and frame the spectacular surroundings.

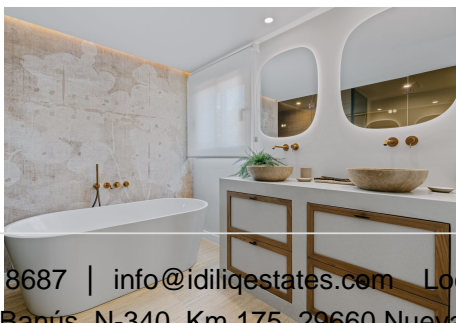
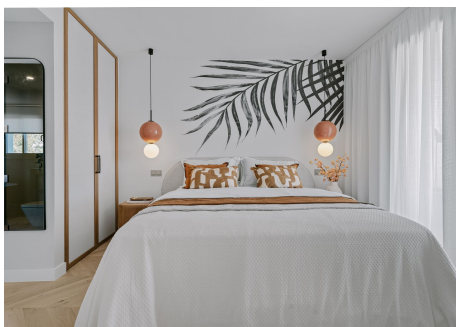
The open-plan kitchen, equipped with premium Siemens appliances, seamlessly connects to the living and dining area, creating an inviting environment for both everyday living and entertaining.

Outside, the private terrace is designed for year-round enjoyment. It features a private swimming pool, outdoor BBQ kitchen, sun lounge area, and dining space — all overlooking the serene lake and la Concha mountain backdrop.

Additional features include:

- Private indoor parking space
- Storage room
- Golf buggy parking
- Gated community with 24-hour security

Apartment Vista Lago represents a rare opportunity to acquire a fully renovated luxury residence in one of Marbella's most desirable residential areas.





# IDILIQ

## ESTATES

