




MIDDLE FLOOR APARTMENT 4 BEDROOMS 2 BATHROOMS IN SAN PEDRO DE ALCÁNTARA

 San Pedro de Alcántara

REF# R5302522 395.000 €

BEDS

4

BATHS

2

BUILT

110 m²

TERRACE

3 m²

Bright 8th-Floor Apartment with Sea Views in the Heart of San Pedro Boulevard

Located in one of the most sought-after areas of San Pedro Alcántara, right on the Boulevard, this spacious eighth-floor apartment enjoys a southwest orientation and lovely open views of the sea and surrounding area.

The property stands out for its natural light and sense of space. The living-dining area connects seamlessly with the kitchen through a practical peninsula layout, creating an open-plan and functional living space, ideal for both everyday living and entertaining.

The apartment currently offers 4 exterior bedrooms. Two of them have been combined to create a larger bedroom, while still maintaining separate entrances, making it easy to revert to the original four-bedroom layout if desired. There are also 2 fully tiled bathrooms with walk-in showers.

+34 951 123 083 | +44 (0)330 179 8687 | info@idiliqestates.com Local 28, Edificio D, Centro de Negocios Puerta de Banús, N-340, Km 175, 29660 Nueva Andlucia

IDILIQ

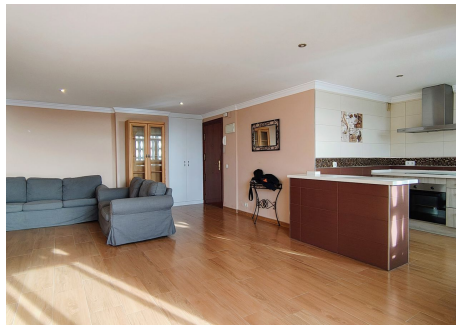
ESTATES

The property is ready to move into, but it also represents an excellent investment opportunity. Homes of this type in the area can achieve rental yields of around 5%, thanks to the strong demand for long-term rentals.

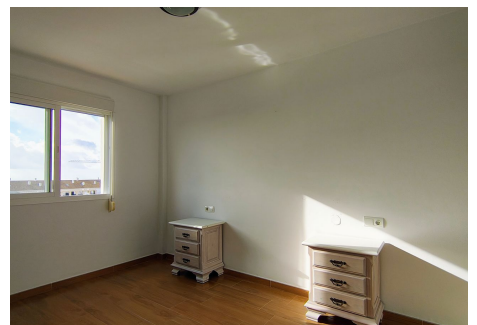
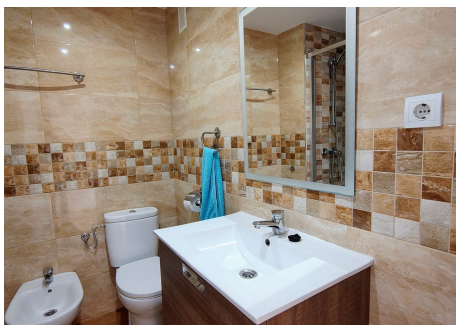
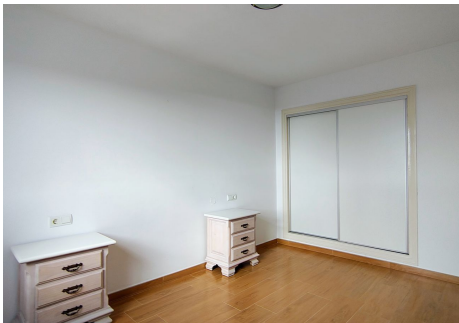
The location is undoubtedly one of its greatest strengths: surrounded by shops, restaurants, schools, and all amenities, and just a 20-minute walk to the beach. In such a central area, a car is not essential for daily life.

The apartment does not include a parking space; however, street parking is available nearby, and there is the option to rent a space in the public parking in the center of San Pedro, with both 24-hour and nighttime rental options.

A spacious, well-located home with beautiful views and strong investment potential.



+34 951 123 083 | +34 (0)330 179 3687 | info@idiliqestates.com Local 28, Edificio D, Centro de Negocios Puerta de Banús, N-340, Km 175, 29660 Nueva Andalucía



IDILIQ

ESTATES

