



R5298958

📍 Torrequebrada

REF# R5298958 488.000 €

BEDS

4

BATHS

2

BUILT

158 m²

TERRACE

30 m²

Spacious Duplex Penthouse with Sea & Mountain Views – Prime Benalmádena Location

This bright and generously proportioned duplex penthouse offers beautiful sea and mountain views, excellent outdoor space, and a practical layout ideal for family living or as a solid investment on the Costa del Sol.

First level:

A welcoming, spacious entrance leads into a comfortable lounge and dining area with direct access to a terrace—perfect for enjoying the views and outdoor living. The fully fitted kitchen includes a private balcony. This level also features two well-sized bedrooms and two bathrooms, offering convenience and flexibility for guests or family members.

Second level:

Upstairs you will find two additional bedrooms, both with access to a large terrace, creating a private upper-floor retreat with plenty of natural light and open views.

+34 951 123 083 | +44 (0)330 179 8687 | info@idiliqestates.com Local 28, Edificio D, Centro de Negocios Puerta de Banús, N-340, Km 175, 29660 Nueva Andalucía

Features & extras:

Solar panels for improved energy efficiency

Air conditioning throughout

Underground parking space

Well-maintained communal pool and gardens

Children's playground located just across the street

Excellent location:

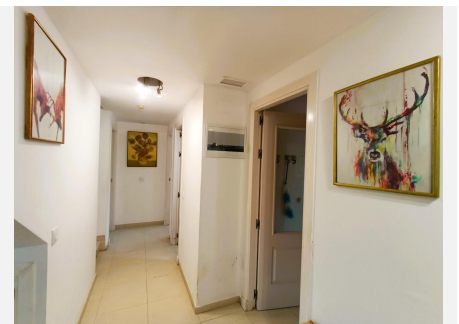
Less than a 10-minute walk to the nearest bus stop

Approx. 12-minute walk to Mercadona and Benalmádena International College

3-minute drive to golf courses

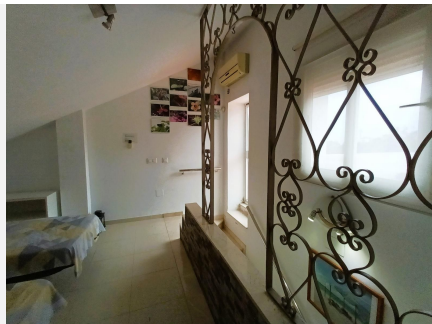
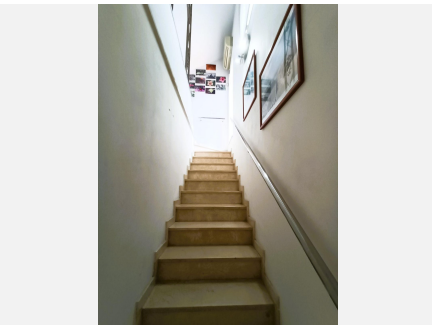
10-minute drive to Torrequebrada International School

10-minute drive to beach



IDILIQ

ESTATES



IDILIQ

ESTATES



IDILIQ

ESTATES

