



R5298265

📍 The Golden Mile

REF# R5298265 635.000 €

BEDS

2

BATHS

1

BUILT

61 m²

TERRACE

9 m²

Beachfront Apartment in Puerto Banús with Sea & La Concha Views

This outstanding beachfront apartment is ideally located in the heart of Puerto Banús, one of Marbella's most prestigious and vibrant destinations. Set within a secure gated community, the property enjoys a prime position just steps away from the beach, renowned restaurants, designer boutiques, and all everyday amenities, offering an effortless Mediterranean lifestyle in a truly privileged setting.

Filled with natural light, the apartment boasts beautiful open views of the Mediterranean Sea and the iconic La Concha mountain. The interior layout has been thoughtfully designed to combine comfort and practicality, featuring a generous living and dining area that flows seamlessly into a modern, fully equipped kitchen, perfect for both daily living and entertaining.

The property offers two well-proportioned bedrooms and a contemporary bathroom, creating a welcoming and functional home. Centralized air conditioning, shutters, and an airy, bright ambiance ensure comfort throughout the year.

Located within a well-maintained, gated complex, residents benefit from a peaceful and secure environment,

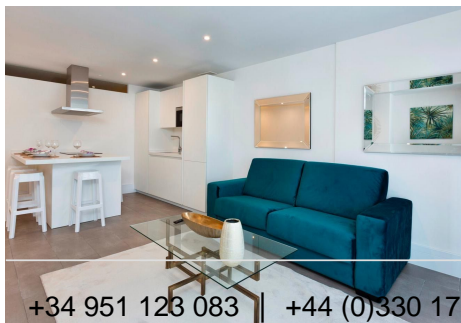
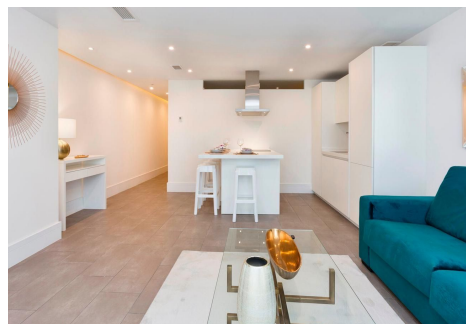
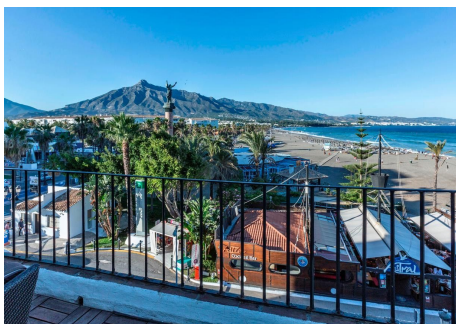
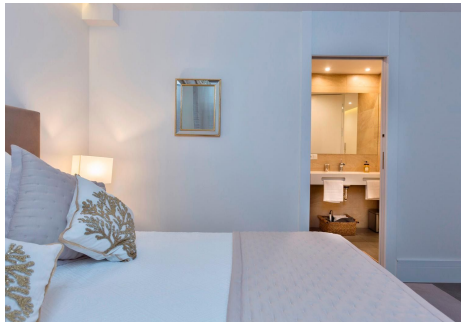
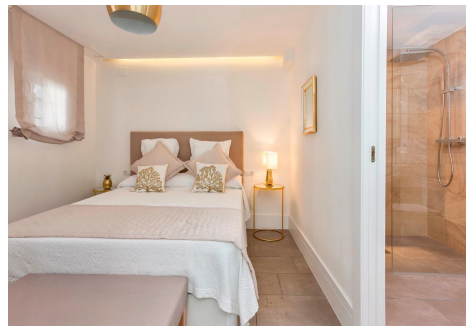
IDILIQ

ESTATES

making the apartment ideal as a permanent residence, a holiday retreat, or a high-demand rental property. A transferable touristic license is already in place, allowing for short-term rentals and immediate income generation, enhancing its appeal as a solid investment.

A rare opportunity to acquire a beachfront home in one of Marbella's most exclusive areas, combining stunning sea and mountain views with exceptional location and strong rental potential.

Perfect for buyers seeking a prime coastal lifestyle, holiday homes and investors looking for a ready-to-perform asset in Puerto Banús.



+34 951 123 083 | +44 (0)330 179 8687 | info@idiliqstates.com Local 28, Edificio D, Centro de Negocios Puerta de Banús, N-340, Km 175, 29660 Nueva Andlucia