



TOWNHOUSE 2 BEDROOMS 1.5 BATHROOM IN CALAHONDA

 Calahonda

REF# R5297590 315.000 €

BEDS	BATHS	BUILT	PLOT	TERRACE
2	1.5	73 m ²	103 m ²	15 m ²

This typical Andalusian townhouse offers a comfortable and welcoming layout with 2 bedrooms, 1 bathroom plus a separate guest toilet, a bright living room with fireplace, and an open-plan kitchen. There is central heating (gas) and airco in living and bedrooms. Both bedrooms feature built-in wardrobes and their own washbasin, a practical and traditional detail. From the private terrace you can enjoy open views over the communal garden with mature trees, providing a peaceful and green setting.

The property is part of a well-established residential complex built in 1975 by a Dutch construction company. While some original Dutch owners remain, the community today is a pleasant mix of international residents. The complex is gated, child-friendly, and offers a communal swimming pool and shared parking, making it ideal for both permanent living and holidays.

Situated in the popular area of Calahonda, the property enjoys a highly convenient location. Within walking distance you will find a variety of restaurants, cafés, a children's playground, and a wooded area ideal for

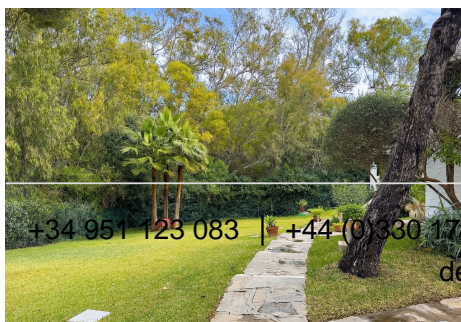
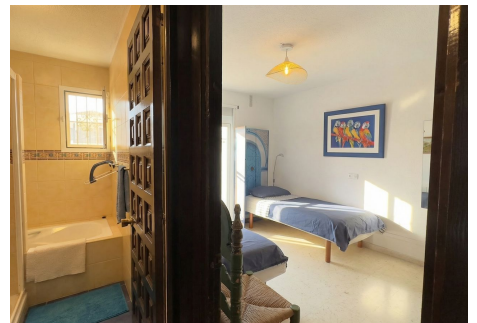
IDILIQ

ESTATES

dog walking. Sports enthusiasts will appreciate the nearby tennis and paddle tennis club, as well as a gym. The beautiful sandy beaches of Calahonda, with numerous beach bars (chiringuitos) catering to all tastes, are just a short drive away.

Calahonda is strategically located between Fuengirola and Marbella, both offering extensive shopping centres, vibrant high streets, and a wide range of leisure facilities. The area has excellent road connections via the A-7 and AP-7, and Málaga International Airport is approximately 30 minutes away, making this an easily accessible destination for international travel.

An ideal property as a holiday home, permanent residence, or investment, combining Andalusian charm with a prime Costa del Sol location.



IDILIQ

ESTATES

