



TOWNHOUSE 3 BEDROOMS 3 BATHROOMS IN ELVIRIA



Elviria

REF# R5296498 850.000 €

BEDS

3

BATHS

3

BUILT

345 m²

TERRACE

76 m²

Elevate your lifestyle at this new exclusive residential.

This collection of 113 townhomes designed around light, privacy, and everyday well-being. Set in an elevated position, the homes enjoy panoramic views of the sea and surrounding mountains, combined with a refined architectural style and carefully planned interiors.

Each townhome is distributed over four levels and features a private glass-door elevator providing direct access to all floors. Spacious terraces include the option of a jacuzzi, outdoor kitchen with barbecue, and dedicated areas for outdoor dining and relaxation, creating seamless indoor-outdoor living.

The interiors are designed with comfort and functionality in mind. Bedrooms use soft materials and warm tones, with a master suite that includes an en-suite bathroom, dressing room, and private terrace. Two additional bedrooms feature built-in wardrobes and share a full bathroom with neutral, modern finishes. Living areas include an open-plan kitchen fitted with Siemens appliances (with alternative ranges available), a guest toilet, and a generous living-dining space with large windows opening directly onto the terrace and

+34 951 123 083 | +44 (0)330 179 8687 | info@idiliqestates.com Local 28, Edificio D, Centro de Negocios Puerta de Banús, N-340, Km 175, 29660 Nueva Andlucia

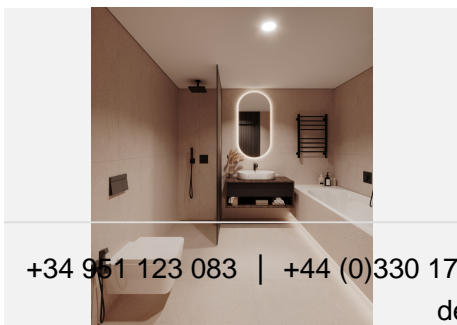
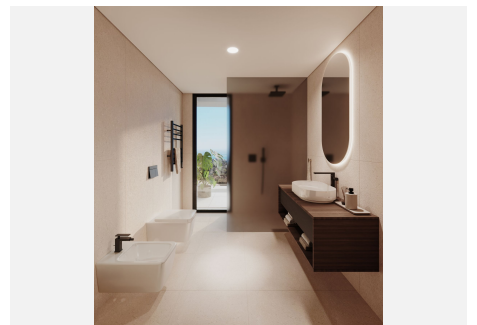
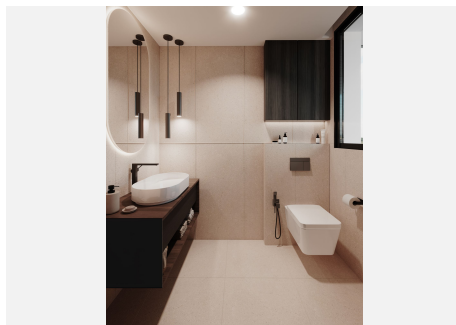
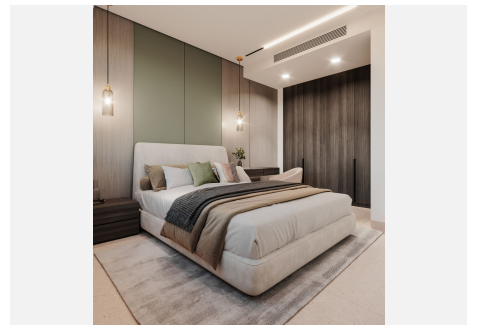
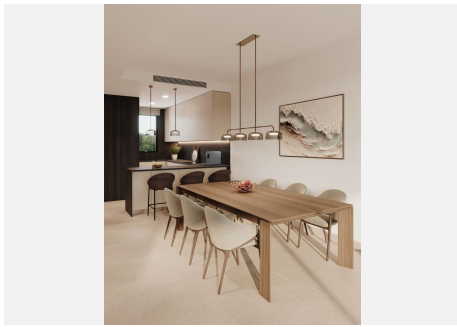
IDILIQ

ESTATES

garden.

Each home includes two private parking spaces, a storage room, laundry room, and direct access to the property. Customisation options are available to adapt the home to individual preferences.

Residents benefit from a comprehensive wellness and leisure offering, including a heated semi-Olympic outdoor pool, heated indoor pool, fully equipped gym with yoga and Pilates studio, sauna, hammam, and hydrotherapy area with ice buckets. Outdoor facilities include five dedicated sports and wellness areas, multiple yoga and calisthenics zones, an outdoor bar with Balinese beds, and landscaped communal spaces. The development also features 24-hour security for peace of mind.



+34 951 123 083 | +44 (0)330 179 8687 | info@idiliqestates.com Local 28, Edificio D, Centro de Negocios Puerta de Banús, N-340, Km 175, 29660 Nueva Andlucia

IDILIQ

ESTATES

