



## PENTHOUSE 2 BEDROOMS 2 BATHROOMS IN ESTEPONA

📍 Estepona

REF# R5295277 545.000 €

BEDS

2

BATHS

2

BUILT

120 m<sup>2</sup>

TERRACE

35 m<sup>2</sup>

Brand New South-Facing Penthouse with Panoramic Sea & Mountain Views – Habitat Valle Romano

Discover this stunning, brand new penthouse located in the contemporary development of Habitat Valle Romano, set within the prestigious Valle Romano Golf Estate. Designed for modern Mediterranean living, this spacious property offers an exceptional blend of comfort, style, and lifestyle amenities.

The penthouse features two generous bedrooms and two bathrooms, including a master suite with en-suite bathroom, finished to a high standard throughout. The bright open-plan kitchen, dining, and living area flows seamlessly onto an impressive south-facing L-shaped terrace, ideal for outdoor dining, entertaining, or simply relaxing while enjoying panoramic views of the Costa del Sol coastline, surrounding mountains, and the Mediterranean Sea.

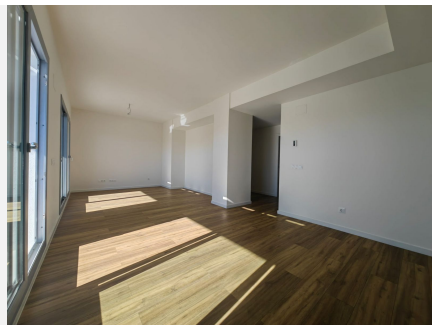
# IDILIQ

## ESTATES

Residents benefit from a secure and private environment, with underground parking and a storage room included. The development offers outstanding communal facilities, including a large outdoor swimming pool, fully equipped gym, communal work and entertainment space with a fitted kitchen, outdoor fitness circuit with exercise machines, chill-out areas, and a pétanque court—all designed to enhance everyday living.

Valle Romano enjoys a privileged location, just 10 minutes by car from Estepona Old Town, the marina, beaches, and all local amenities, while being surrounded by nature and golf.

This penthouse is ideal as a family holiday home, a full-time residence, or a high-potential investment property in one of Estepona's most up-and-coming areas



+34 951 123 083 | +44 (0)330 179 8687 | [info@idiliqestates.com](mailto:info@idiliqestates.com) Local 28, Edificio D, Centro de Negocios Puerta de Banús, N-340, Km 175, 29660 Nueva Andalucía



# IDILIQ

ESTATES



# IDILIQ

ESTATES

