

R5293135

📍 Benalmadena

REF# R5293135 375.000 €

BEDS

3

BATHS

3

BUILT

99 m<sup>2</sup>

PLOT

70 m<sup>2</sup>

TERRACE

20 m<sup>2</sup>

High-potential property in a prime location in Benalmádena – Duplex with terrace and rear garden

#### Short description

Duplex townhouse in an excellent location within the Solymar residential area. The property features a terrace and a rear garden and offers multiple possibilities for renovation and extension – ideal for buyers with vision.

#### Description

This duplex townhouse is located in a highly sought-after area of Benalmádena and stands out for its strong development potential.

The property is arranged over two levels and offers a total built area of approximately 97m<sup>2</sup> according to the Land Registry. The living space is complemented by a terrace and a rear garden, providing various opportunities for extension and redesign.

# IDILIQ

ESTATES

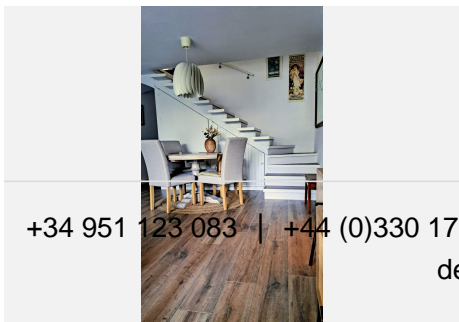
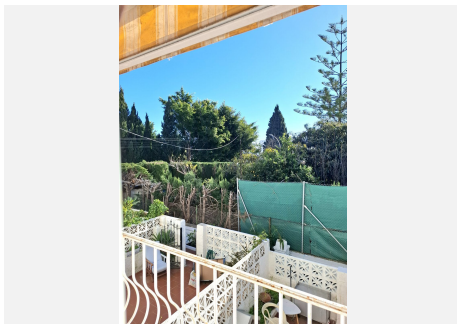
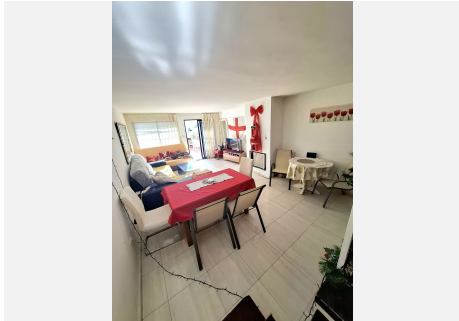
Possible improvement options include:

- Extending the living area by incorporating the terrace
- Enlarging individual rooms
- Creating a winter garden or additional living space in the rear garden
- A full renovation tailored to personal preferences

Images of a renovated neighboring property within the same residential complex are included as a visual reference only. These images do not reflect the current condition of the property offered.

The price is open to negotiation.

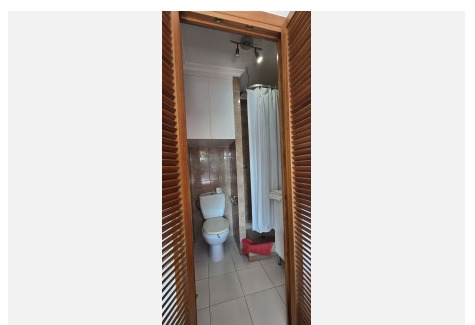
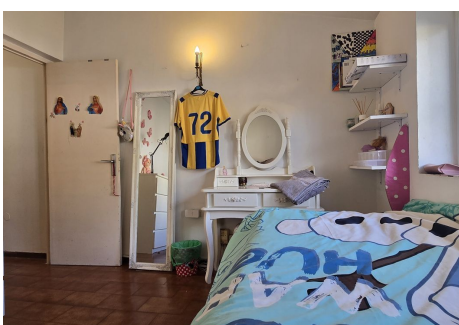
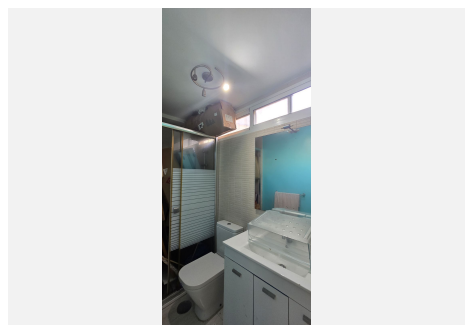
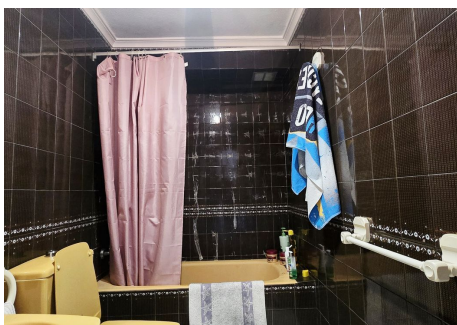
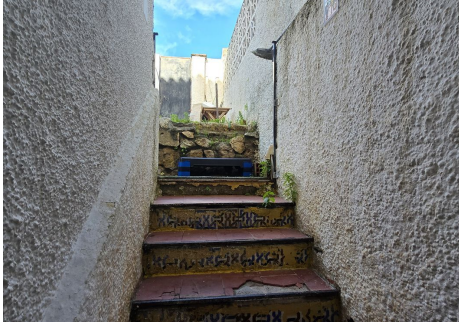
Please contact us to submit an offer.



+34 951 123 083 | +44 (0)330 179 8687 | [info@idiliqestates.com](mailto:info@idiliqestates.com) | Local 28, Edificio D, Centro de Negocios Puerta de Banús, N-340, Km 175, 49660 Nueva Andalucía

# IDILIQ

ESTATES



# IDILIQ

ESTATES

