



R5288470

📍 El Pinillo

REF# R5288470 550.000 €

BEDS

3

BATHS

2

BUILT

102 m²

TERRACE

78 m²

This 102 m² interior apartment, fully renovated in 2025, is situated in a quiet and well-maintained residential urbanisation, offering high-quality communal facilities.

The property features:

3 spacious and bright bedrooms

2 modern bathrooms

A comfortable living-dining area with direct access to the exterior

A 66 m² private terrace with garden and automatic irrigation + Private patio 12m²

The private outdoor spaces are complemented by excellent communal amenities:

Communal swimming pool

Padel court

No tourist licence, ensuring a peaceful and stable residential environment.

Ideal as a permanent residence, second home, or for families seeking comfort, space, and quality of life.

+34 951 123 083 | +44 (0)330 179 8687 | info@idiliqestates.com Local 28, Edificio D, Centro de Negocios Puerta de Banús, N-340, Km 175, 29660 Nueva Andlucia

IDILIQ

ESTATES

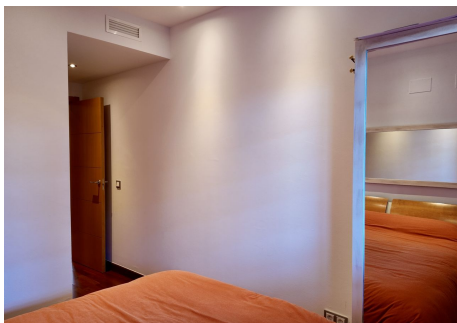
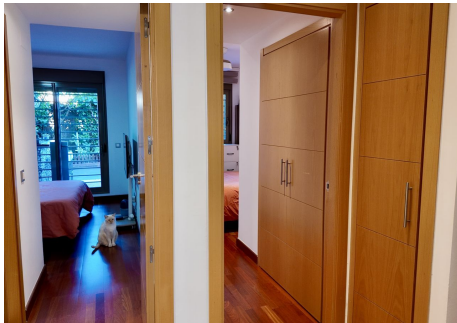
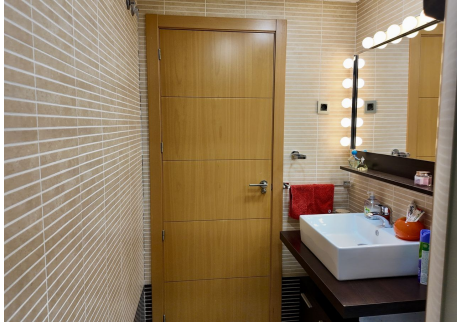
Strategically located close to all amenities: shops, schools, public transport, and with easy access to Málaga city and the beaches of the Costa del Sol.

Key-ready property – no renovation needed.
Viewing highly recommended.



IDILIQ

ESTATES



IDILIQ

ESTATES

