



R5288119

📍 La Campana

REF# R5288119 750.000 €

BEDS

2

BATHS

2

BUILT

166 m²

TERRACE

20 m²

Exceptional Contemporary Apartment with Panoramic Views in La Campana (Nueva Andalucia) – €750,000

Welcome to an elegant and meticulously designed contemporary apartment located in one of La Campana's most desirable modern developments. This stunning residence perfectly combines refined design, comfort, and lifestyle, offering a turn-key home ideal for both permanent living and high-end investment.

The apartment features a bright open-plan living and dining area, seamlessly connected to a sleek, fully fitted designer kitchen with premium appliances, clean lines, and a central island – perfect for both everyday living and entertaining. Floor-to-ceiling sliding doors flood the interior with natural light and open onto a generous private terrace, where open views over greenery, the surrounding area, and distant mountains create a serene Mediterranean atmosphere.

The property offers two beautifully appointed bedrooms, including a tranquil master suite with direct terrace access and an elegant en-suite bathroom. Both bathrooms are finished to an exceptional standard, featuring walk-in rainfall showers, contemporary fixtures, floating vanity units, and ambient LED lighting. A separate

+34 951 123 083 | +44 (0)330 179 8687 | info@idiliqestates.com Local 28, Edificio D, Centro de Negocios Puerta de Banús, N-340, Km 175, 29660 Nueva Andlaucia

IDILIQ

ESTATES

laundry/utility room adds further practicality to this refined home.

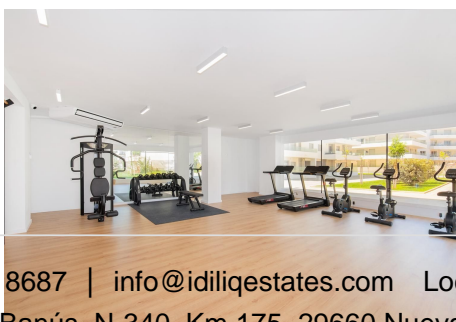
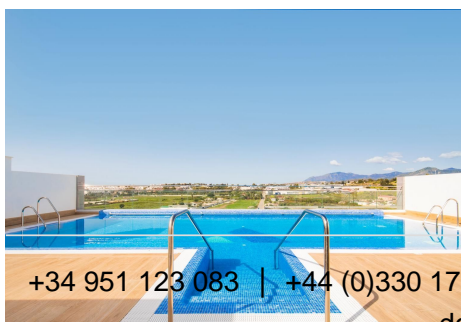
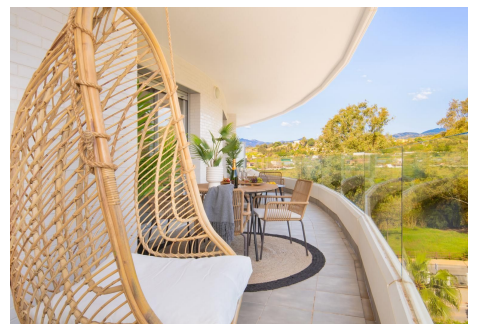
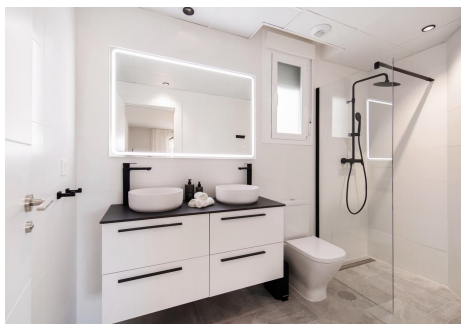
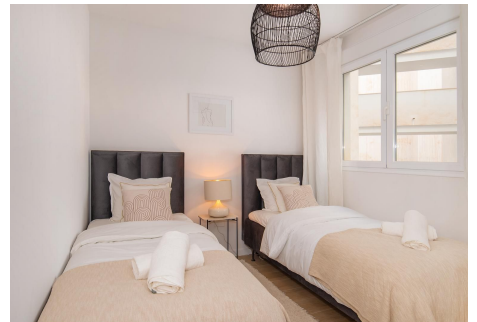
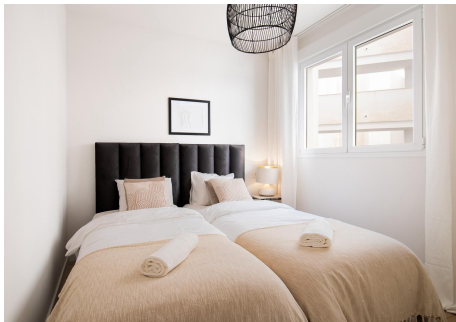
Finished throughout in a sophisticated neutral palette, the apartment showcases high-quality flooring, integrated air conditioning, modern lighting, and bespoke furnishings that elevate the sense of luxury and comfort.

Residents enjoy access to exclusive communal facilities, including a rooftop swimming pool with panoramic views, a fully equipped gym, and beautifully maintained communal areas – offering a true resort-style living experience. The building itself stands out with its modern architecture, curved terraces, and glass balustrades, reflecting contemporary Mediterranean elegance.

Ideally located just minutes from San Pedro town centre, beaches, restaurants, international schools, and with easy access to Marbella and Puerto Banús, this property represents an outstanding opportunity in a prime location.

Price: €750,000

A rare opportunity to acquire a stylish, high-quality apartment in La Camapana – perfect as a primary residence, holiday home, or premium rental investment.



+34 951 123 083 | +44 (0)330 179 8687 | info@idiliqestates.com Local 28, Edificio D, Centro de Negocios Puerta de Banús, N-340, Km 175, 29660 Nueva Andalucía