



## TOWNHOUSE 3 BEDROOMS 2.5 BATHROOMS IN ESTEPONA

📍 Estepona

REF# R5288101 535.000 €

BEDS

3

BATHS

2.5

BUILT

240 m²

Discover your new home in Estepona! Enjoy stunning sea views from above. This charming three-story townhouse offers an ideal space to enjoy life on the Costa del Sol. With 240 m² built and 200 m² of living space, it features a private garage and additional parking for another car. On the ground floor, a welcoming living-dining room connects to an enclosed terrace, perfect for relaxing. A modern kitchen and a guest toilet complete this floor.

On the second floor, you'll find three spacious bedrooms with built-in wardrobes and two bathrooms with underfloor heating, ensuring comfort at all times. Security bars on the windows provide added safety and peace of mind. The property also boasts large terraces perfect for soaking up the sun and two communal swimming pools to cool off on hot days.

Located just a short drive from the beach and close to all essential amenities such as supermarkets, pharmacies, and schools, this house is perfect for families or as an investment. Don't miss this opportunity

+34 951 123 083 | +44 (0)330 179 8687 | [info@idiliqestates.com](mailto:info@idiliqestates.com) Local 28, Edificio D, Centro de Negocios Puerta de Banús, N-340, Km 175, 29660 Nueva Andlucia

to live in this wonderful setting!

Townhouse, Estepona, Costa del Sol.

3 Bedrooms, 2.5 Bathrooms, Built 240 m².

Setting : Close To Sea, Close To Town, Close To Schools, Urbanisation.

Orientation : South, South West.

Condition : Excellent.

Pool : Communal.

Climate Control : Air Conditioning.

Views : Mountain, Country, Panoramic.

Features : Covered Terrace, Fitted Wardrobes, Storage Room, Utility Room, Marble Flooring.

Furniture : Not Furnished.

Kitchen : Fully Fitted.

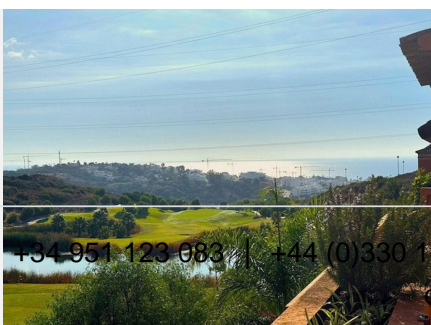
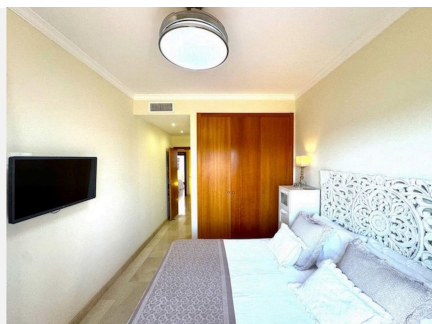
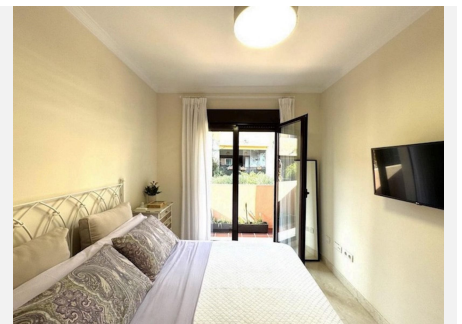
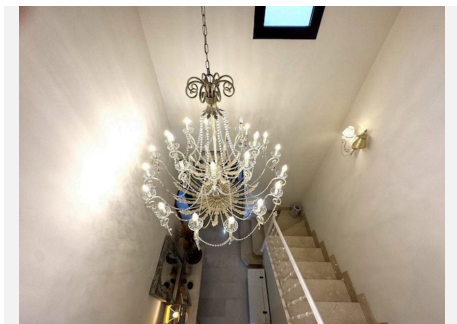
Garden : Communal.

Security : Entry Phone.

Parking : Garage.

Utilities : Electricity, Drinkable Water.

Category : Holiday Homes, Investment.



# IDILIQ

ESTATES

