



R5286541

📍 Estepona

REF# R5286541 1.600.000 €

BEDS

6

BATHS

5

BUILT

200 m²

TERRACE

1100 m²

This stunning south-facing family home is located in Las Lomas, Estepona, in a quiet and secure residential area and enjoys breathtaking panoramic views over the Mediterranean Sea. Beautifully renovated to an exceptional standard, the property is distributed over two spacious levels, offering comfort, functionality and an excellent quality of life.

The ground floor features a bright open-plan living area that seamlessly integrates a brand-new fully fitted kitchen, dining area and lounge, with direct access to a large terrace, private swimming pool and beautifully landscaped garden, creating a perfect indoor–outdoor flow ideal for everyday living and entertaining. Adjacent to the kitchen, there is a charming, light-filled room that works perfectly as a home office, playroom or relaxation space.

This level also includes a guest toilet, laundry room and a generous bedroom with en-suite bathroom. The upper floor offers three additional bedrooms and two bathrooms, highlighted by the impressive master suite, which features an en-suite bathroom and a large private terrace with spectacular panoramic sea views. The

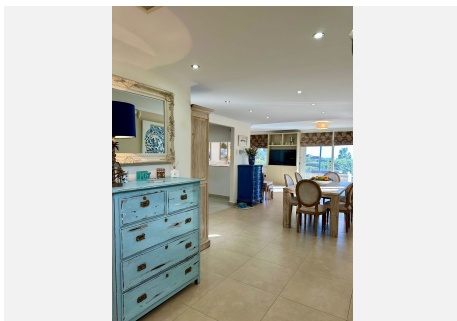
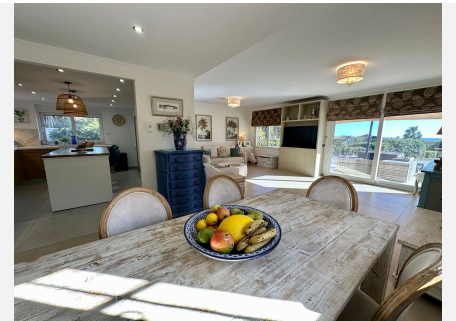
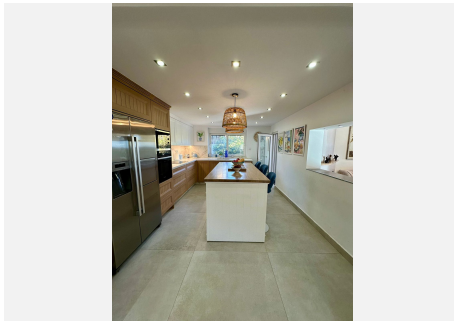
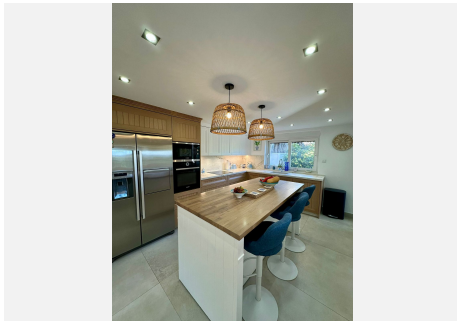
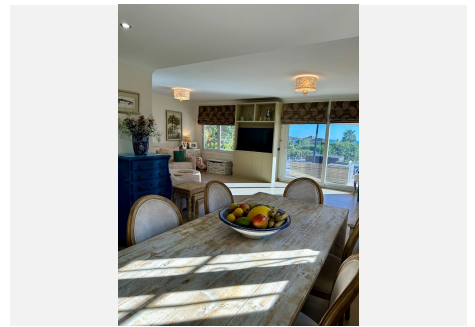
IDILIQ

ESTATES

property is fully equipped with central heating and centralized air conditioning, electric shutters for enhanced comfort and security, and newly installed solar panels.

All bedrooms include fitted wardrobes. Set on two combined plots totaling approximately 1,300 m², the outdoor area boasts a large recently tiled swimming pool, jacuzzi, meticulously maintained garden, two vehicle entrances with electric gates and ample parking space.

As an added value, the property includes a separate two-bedroom bungalow, just one year old, ideal for visiting family and guests, rental income or additional living space. Located in a peaceful and family-friendly area of the Estepona countryside, the home is just a five-minute drive from Laguna Village and ten minutes from the centre of Estepona, offering the perfect balance of privacy, sea views and proximity to all amenities.



IDILIQ

ESTATES

