



R5286220

 Nueva Andalucía

REF# R5286220 1.550.000 €

BEDS

4

BATHS

2

BUILT

202 m²

TERRACE

40 m²

This magnificent 4 bedroom apartment with stunning sea views comprises of an entrance hall leading into a large combined living and dining room, fully fitted kitchen, an impressive master bedroom suite with a Jacuzzi bath and shower, two double bedrooms and one guest bedroom sharing family bathroom.

The terrace is covered, the south orientation allowing for plenty of light to create a delightful outdoor area perfect for dining and relaxing in the sun.

Comes with a parking space and a storage in the underground garage from where there is lift access up to each level of the building.

Situated next to Los Naranjos Golf Course and with proximity to a selection of other renowned golf courses, Magna Marbella is a popular choice for both residents and holiday-makers. Just a short drive to all amenities including bars, restaurants and shops, as well as the luxury harbour of Puerto Banus and the beach, it is the ideal base for couples and families alike.

The complex itself offers well-maintained communal gardens, a beautiful swimming pool area and excellent 24 hour security.

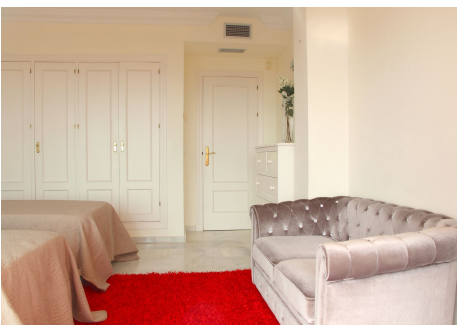
This is a very attractive apartment in a popular location in the Nueva Andalucia Golf Valley; a great option as a permanent residence, holiday home or investment as a rental property.

+34 951 123 083 | +44 (0)330 179 8687 | [info@idiliqestates.com](mailto:info@idiliqestates.com) Local 28, Edificio D, Centro de Negocios Puerta de Banús, N-340, Km 175, 29660 Nueva Andlaucia



# IDILIQ

ESTATES





# IDILIQ

ESTATES

