



MIDDLE FLOOR APARTMENT 2 BEDROOMS 2 BATHROOMS IN FUENGIROLA

 Fuengirola

REF# R5274022 630.000 €

BEDS

2

BATHS

2

BUILT

88 m²

TERRACE

35 m²

Panoramic views and effortless modern design come together in this exceptional phase 5 residence at Higueron West.

Phase 5 is part of the larger Higueron West development with over 100,000 m² of landscaped gardens, walking and cycling paths, and even a dedicated dog park.

If you have been looking for the perfect blend of luxury and lifestyle, this is where it starts.

The terrace and the views:

The heart of this home is the 35m² terrace. It is deep, wide, and designed for people who truly value outdoor living.

Featuring a dedicated bbq area and framed by panoramic views, it is an ideal space for entertaining or simply watching the sun set over the coast.

The living space inside:

The 2 bedroom apartment is defined by an open, intuitive layout.

With two spacious bedrooms and two bathrooms, the property features the clean lines and premium finishes that have made Higuaron West the most sought-after community in the area.

The floor to ceiling sliding windows creating a seamless transition where the interior living space and the expansive terrace blend perfectly into one.

Parking and storage:

This property is built for practical convenience, including two private parking spaces and a large storage room.

Whether you are looking for a permanent home or a high-performing investment, this phase 5 apartment offers the quality and location that simply doesn't stay on the market for long.

Higuaron West is one of the most successful and prestigious residential developments on the Costa del Sol. It is designed as a low-density, eco-friendly "city village" that focuses on quality of life, open green spaces, and high-end services.

Location:

The project is situated on a hillside overlooking the Mediterranean, nestled between the municipalities of Fuengirola and Benalmádena.

The location is highly strategic, offering quick access to the A-7 coastal highway:

The Beach: Approximately 1 km (about a 2-minute drive). A dedicated shuttle service connects the development to the Carvajal beach and train station.

Malaga Airport: 15 to 20 minutes (20 km) by car.

Malaga City Center: 25 minutes (25 km).

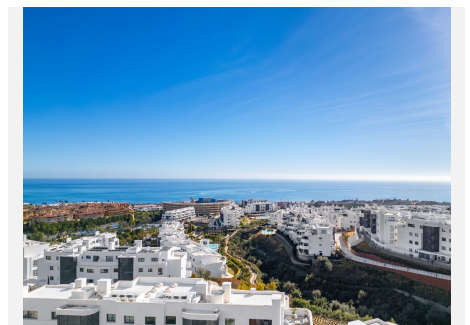
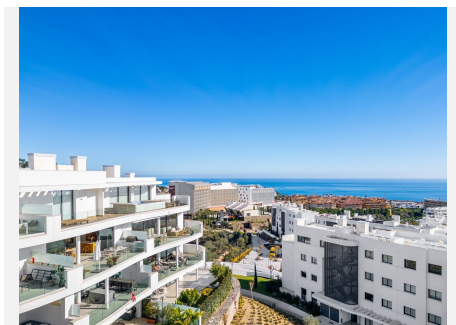
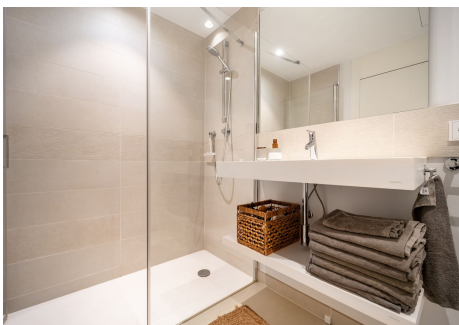
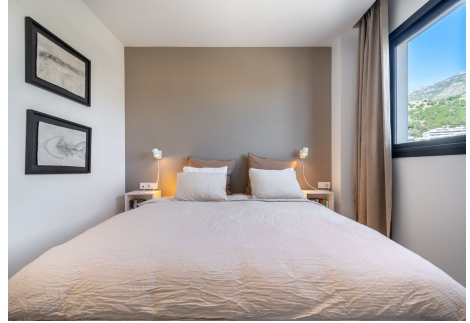
Marbella Center: 25 to 30 minutes (30 km).

Puerto Banús: 35 minutes (38 km).



IDILIQ

ESTATES



IDILIQ

ESTATES

