



R5264320

📍 Marbella

REF# R5264320 850.000 €

BEDS

3

BATHS

4

BUILT

210 m²

PLOT

10 m²

TERRACE

10 m²

WONDERFUL APARTMENT LOCATED IN A BEACHFRONT DEVELOPMENT, FROM THE GARDEN GATE, ABOUT 50 METERS AWAY, YOU HAVE ACCESS TO ONE OF THE BEST BEACHES IN MARBELLA.

Located in a secure tropical complex with three swimming pools, including a children's pool, and gardens with streams and fountains.

The interior layout consists of a foyer, hall, hallway, kitchen/dining room, living room, a very spacious bedroom with a sitting/rest area (previously two bedrooms), two bathrooms, and a toilet.

On the same ground floor, accessed through another entrance, there is a small living room with an open kitchen, a bedroom, and a bathroom.

ON THE UPPER FLOOR there is a bedroom, a dressing room, and a bathroom, connected to the main floor by an internal staircase.

Currently, the property has the peculiarity of being divided into three apartments, as it has separate doors for each one.

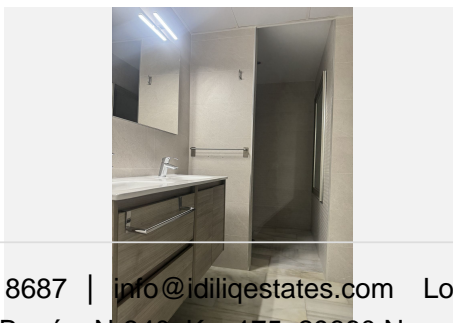
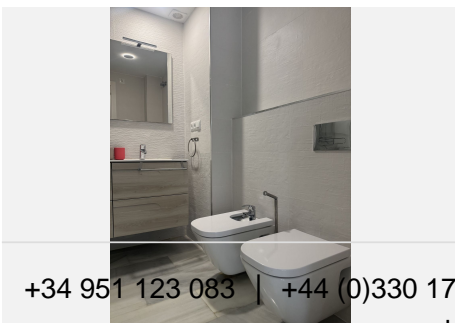
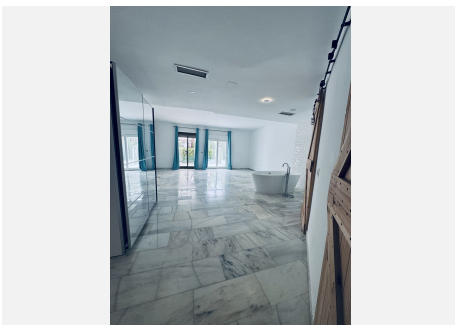
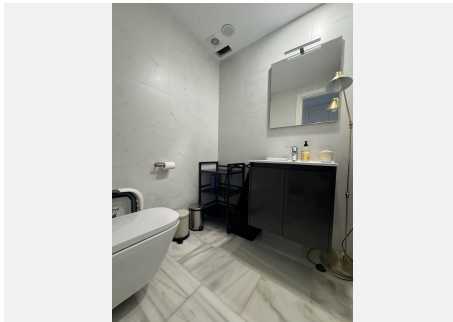
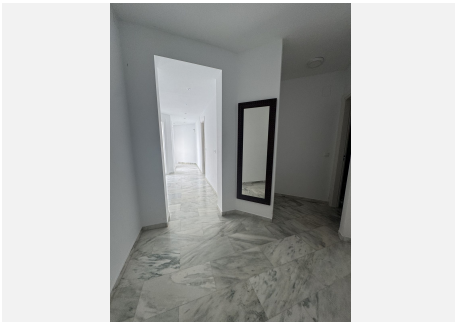
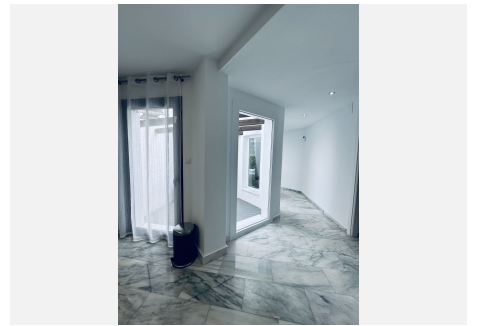
This is because it has a tourist license, and due to its excellent location, it is perfect for renting out as separate apartments. High profitability proven in vacation rentals. Likewise, if you are thinking of making it

+34 951 123 083 | +44 (0)330 179 8687 | [info@idiliqestates.com](mailto:info@idiliqestates.com) Local 28; Edificio D, Centro de Negocios Puerta de Banús, N-340, Km 175, 29660 Nueva Andlucia

# IDILIQ

## ESTATES

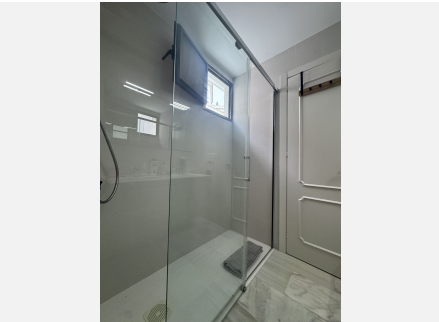
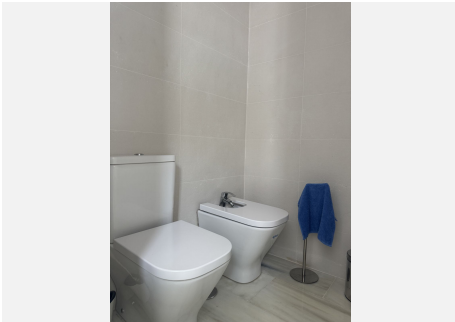
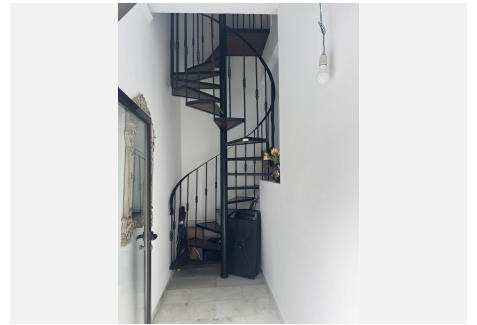
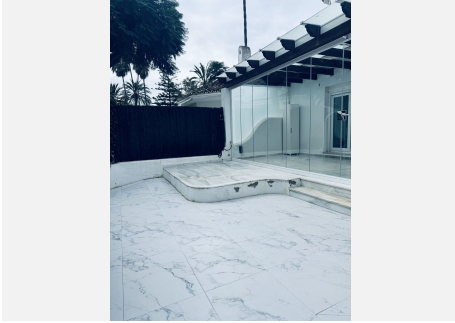
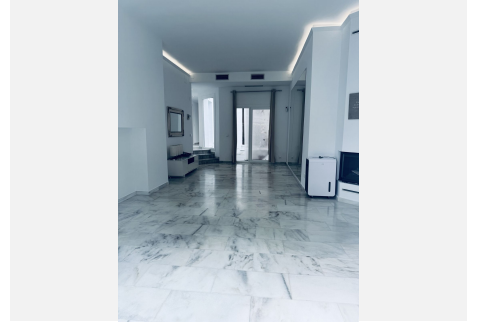
your primary residence, it is also ready for that. Whether you are looking to invest or disconnect. From the garden gate, you can access a spectacular residential complex with tropical gardens and swimming pools, all very well maintained. 150 m from beach bars and restaurants: Chiringuito Las Mimosas, La Plage Casanis, The Beach House, Perla Blanca. 100 m from the best restaurants in the area. 700 m from the pharmacy. 500-800 m from Lidl, Mercadona, Carrefour, and Supercore Express. 2 km from the Santa Clara golf course. 5 km from the center of Marbella. 35 km from Malaga airport.





# IDILIQ

ESTATES



# IDILIQ

ESTATES

