



R5261338

📍 Monda

REF# R5261338 500.000 €

BEDS	BATHS	BUILT	PLOT	TERRACE
2	1	90 m ²	6000 m ²	30 m ²

very special countryside estate located just 15 minutes from Marbella, on the road that connects Marbella with Ojén and Monda.

It's a unique property with a 2-bedroom house, private arena/picadero, large covered event area with bar, well water, electricity and approx. 6,000 m² of mostly flat land.

The estate offers total privacy, sun, nature and multiple possibilities:

- Equestrian use
- Private events
- Retreats
- Investment potential
- Countryside living close to Marbella

Finca – Cortijo, Monda, Costa del Sol.

2 Bedrooms, 1 Bathroom, Built 90 m², Terrace 30 m², Garden/Plot 6000 m².

+34 951 123 083 | +44 (0)330 179 8687 | info@idiliqestates.com Local 28, Edificio D, Centro de Negocios Puerta de Banús, N-340, Km 175, 29660 Nueva Andalucía

IDILIQ

ESTATES

Setting : Mountain Pueblo.

Orientation : South.

Condition : Good.

Pool : Room For Pool.

Climate Control : Fireplace.

Views : Mountain.

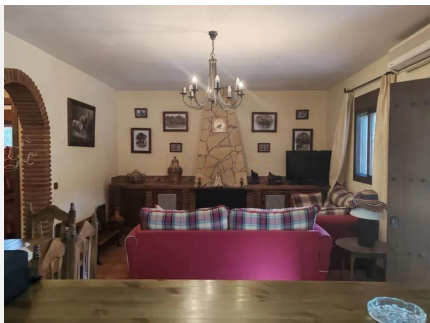
Features : Covered Terrace, Fitted Wardrobes, Private Terrace, WiFi, Access for people with reduced mobility.

Furniture : Part Furnished.

Garden : Private.

Parking : Garage, Covered, More Than One, Private.

Category : Resale.



IDILIQ

ESTATES

