



R5261050

📍 Nueva Andalucía

REF# R5261050 440.000 €

BEDS

2

BATHS

2

BUILT

110 m²

TERRACE

25 m²

Penthouse with a large terrace with view to La Concha mountain in Nueva Andalucía, located in a very quiet and well-maintained residential area, just a few minutes from golf courses, amenities, and Puerto Banús.

The property has two bedrooms and two bathrooms, with the master bedroom featuring a newly renovated en-suite bathroom. The second bedroom has a separate full bathroom. Both bedrooms have built-in wardrobes and feel very spacious.

The kitchen, which is completely new, opens onto the living room and is equipped with high-quality materials and a functional design that offers plenty of storage space. It includes new appliances: refrigerator, dishwasher, washer-dryer, and built-in microwave oven.

The apartment has marble flooring throughout, adding elegance and continuity to the spaces. The living room opens onto a southeast-facing terrace, ideal for enjoying the morning sun, equipped with planters and an automatic irrigation system.

It has recently installed Airzone air conditioning, which allows you to independently control the climate in



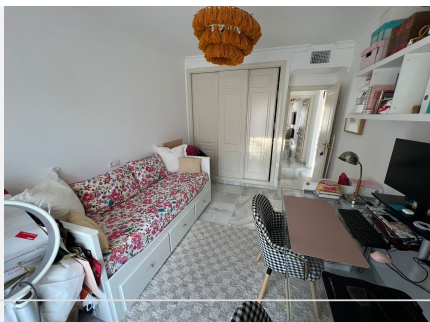
# IDILIQ

## ESTATES

each room using individual thermostats or your smartphone, ensuring maximum comfort throughout the year.

The development offers three swimming pools, large landscaped areas with constant maintenance, and a very quiet and pleasant atmosphere. The price includes a numbered parking space.

A property ready to move into, ideal both as a primary residence and as an investment in one of the most sought-after areas of Nueva Andalucía.



# IDILIQ

ESTATES

