



MIDDLE FLOOR APARTMENT 2 BEDROOMS 2 BATHROOMS IN ESTEPONA

📍 Estepona

REF# R5255629 289.000 €

BEDS

2

BATHS

2

BUILT

92 m²

TERRACE

22 m²

Discover this beautifully renovated apartment ideally located in the prestigious area of Atalaya Golf, just five minutes from San Pedro and within easy reach of Marbella and Estepona. Surrounded by lush golf courses and offering serene open views of the Mediterranean Sea, this property perfectly blends comfort, modern living, and investment value.

Set on the top floor, the apartment features three sunny terraces that invite you to enjoy outdoor living and Marbella's year-round sunshine. With 92 m² of interior space and 22 m² of terraces, it offers a bright and spacious layout comprising two bedrooms and two bathrooms, a welcoming living-dining area, and a fully equipped contemporary kitchen. Every detail has been thoughtfully updated, creating a fresh and move-in-ready home.

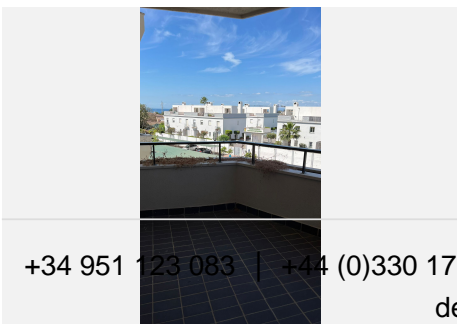
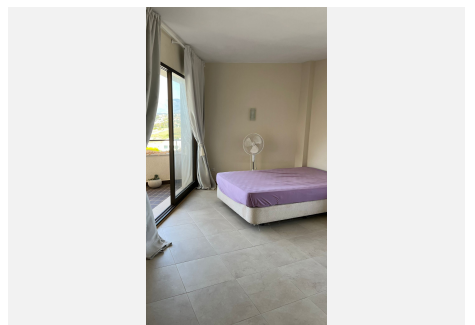
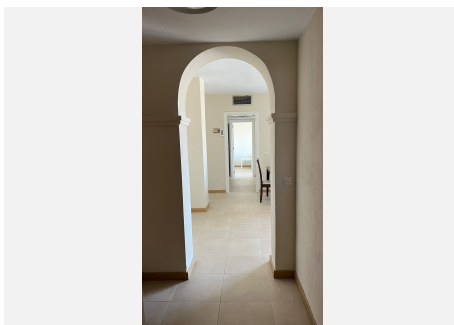
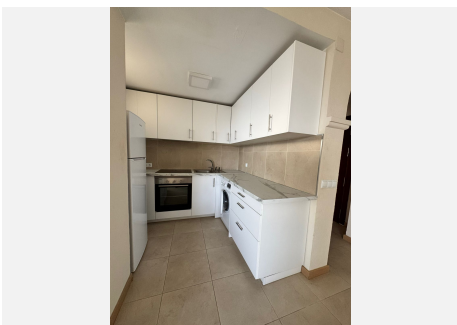
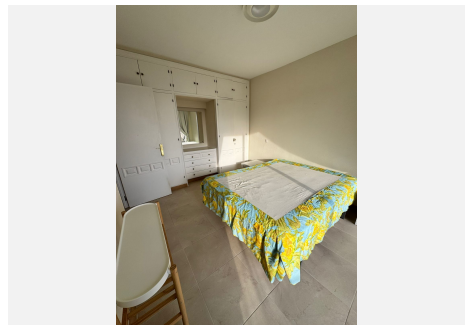
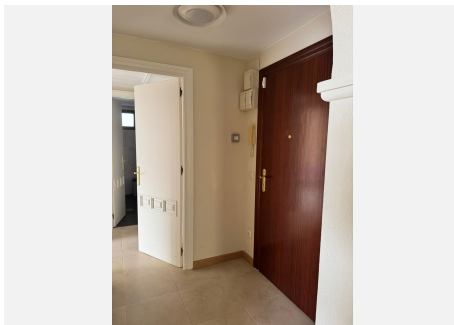
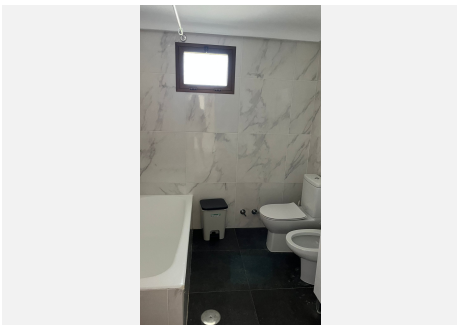
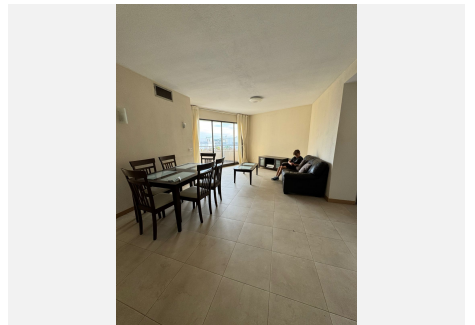
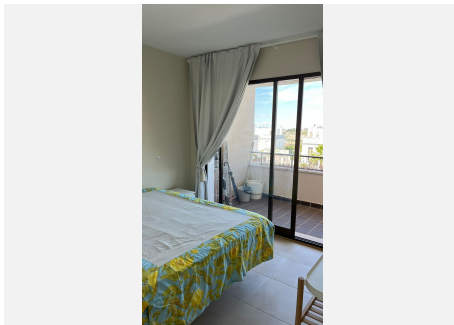
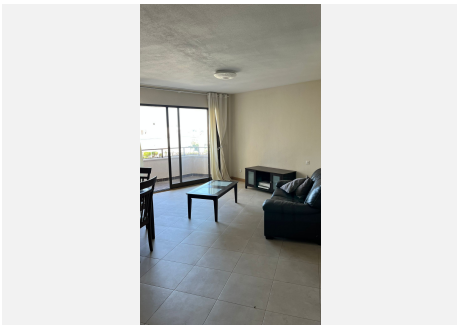
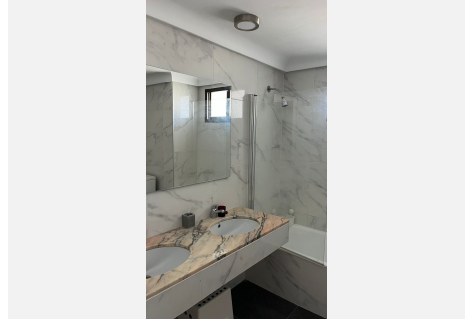
The gated community provides beautiful landscaped gardens, a large swimming pool, and a children's pool, all maintained year-round. Community fees include air conditioning (hot and cold) as well as water consumption, offering excellent value. A private carport is also included.

Thanks to its prime location, modern renovation, and excellent amenities, this apartment is an ideal choice
+34 951 123 083 | +44 (0)330 179 8687 | info@idiliqestates.com Local 28, Edificio D, Centro de Negocios Puerta de Banús, N-340, Km 175, 29660 Nueva Andlucia

IDILIQ

ESTATES

as a permanent residence, a holiday retreat, or a profitable rental investment.



+34 951 123 083 | +44 (0)330 179 589 | info@idiliqstates.com | Local 28, Edificio D, Centro de Negocios Puerta de Barro, N.º 40, Km 175, 29660 Nueva Andalucía