



R5254996

 Mijas

REF# R5254996 585.000 €

BEDS

3

BATHS

3

BUILT

197 m²

TERRACE

55 m²

Exclusive Duplex Penthouse for Sale in Buenavista – Mijas Pueblo.

This exclusive mountain penthouse duplex for sale in the prestigious El Mirador de Buenavista development in Mijas Pueblo offers a truly unique living experience where nature, panoramic sea views and contemporary comfort come together in perfect harmony. Set high in the mountains, the property enjoys a privileged elevated position surrounded by natural beauty, while still offering stunning Mediterranean sea views and excellent connectivity.

Located at the boundary between Mijas, Benalmádena and Fuengirola, the residence is just five minutes from the AP-7 motorway, supermarkets and shopping centres, providing effortless access across the Costa del Sol while preserving a sense of privacy and tranquillity.

Situated on the second floor of a building with lift access, this penthouse features a total built area of approximately 197 m². The interior living space spans around 110 m², complemented by exceptional outdoor areas including a 30 m² covered terrace at living level and an impressive 55 m² open-air upper

+34 951 123 083 | +44 (0)330 179 8687 | info@idiliqestates.com Local 28, Edificio D, Centro de Negocios Puerta de Banús, N-340, Km 175, 29660 Nueva Andalucía

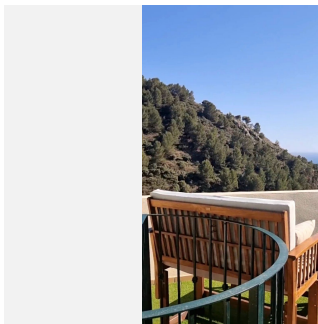
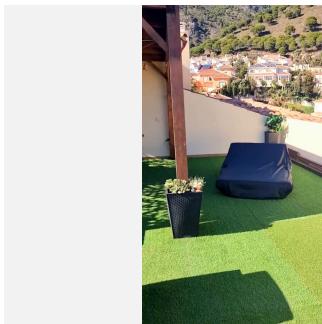
terrace, ideal for outdoor dining, sunbathing and enjoying breathtaking panoramic views of the sea, mountains and surrounding natural landscape.

Designed to maximise light, comfort and style, the interior offers a spacious and luminous living-dining area with a bioethanol fireplace and pre-installation for a traditional fireplace, creating a refined yet cosy ambiance throughout the year. The property comprises three double bedrooms with fitted wardrobes and three bathrooms, one of which has been adapted for laundry and storage purposes. The bathrooms feature elegant finishes, including a designer walk-in shower and a bathtub, combining functionality with modern design.

Further highlights include a south-facing orientation for optimal sunlight, dimmable LED lighting, air conditioning with hot and cold settings, central heating, and contemporary finishes throughout. The penthouse is in excellent condition and ready for immediate occupation.

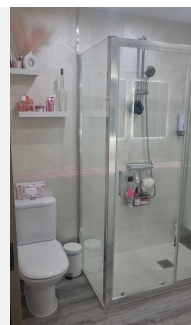
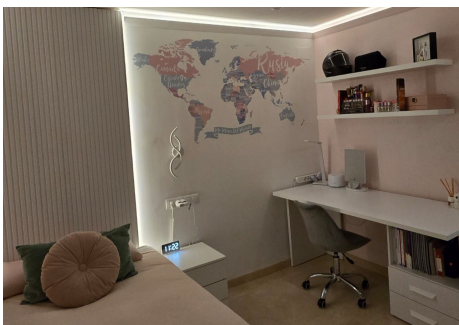
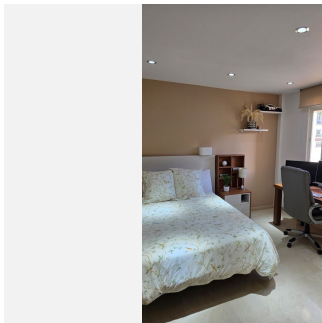
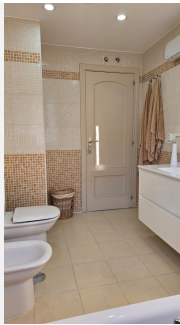
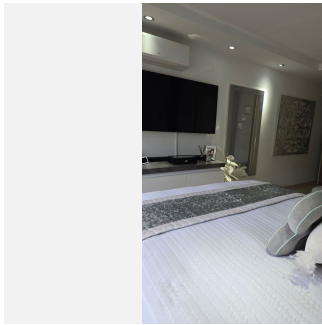
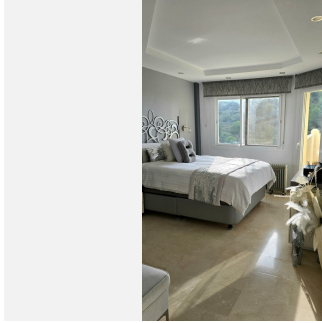
Set within a private, gated residential community with exclusive access, surrounded by nature, the property also offers landscaped communal gardens and a swimming pool, making it ideal as a permanent residence, luxury second home or investment opportunity. A private garage parking space is included in the price, ensuring comfort and security.

A rare opportunity to acquire a mountain penthouse with sea views on the Costa del Sol, offering expansive terraces, refined interiors and an exceptional natural setting combined with proximity to key destinations.



IDILIQ

ESTATES



IDILIQ

ESTATES

