



R5252926

📍 Sotogrande

REF# R5252926 1.850.000 €

BEDS

5

BATHS

4

BUILT

452 m²

PLOT

1200 m²

TERRACE

158 m²

## A Private Artistic Sanctuary in Sotogrande Costa

Hidden behind a private gated entrance, within one of Sotogrande Costa's most established and discreet enclaves, this exceptional residence is a rare offering — a home of soul, scale, and timeless beauty, where art, architecture, and nature exist in perfect harmony.

From the moment you arrive, a sense of privacy and serenity envelops you. Mature gardens, lush greenery, and quiet internal roads create a peaceful atmosphere, yet the vibrant heart of Sotogrande remains just moments away — the marina, beach, championship golf courses, tennis clubs, and fine dining all within minutes.

Inside, the home unfolds as a grand yet intimate Mediterranean estate, rich in character and authenticity. High ceilings, exposed beams, terracotta floors, and handcrafted woodwork provide a warm architectural canvas, while carefully curated artwork and collected pieces give the home its unmistakable identity — elegant, intellectual, and deeply personal.

+34 951 123 083 | +44 (0)330 179 8687 | [info@idiliqestates.com](mailto:info@idiliqestates.com) Local 28, Edificio D, Centro de Negocios Puerta de Banús, N-340, Km 175, 29660 Nueva Andlucia



# IDILIQ

## ESTATES

The layout offers exceptional volume and flexibility, with ample interior space and a generous plot that allow the next owner to expand, reconfigure, or reimagine the home. There is clear potential to create additional bedrooms, guest suites, or private wings, or to convert existing spaces to suit a growing family, multi-generational living, or bespoke lifestyle needs — all while preserving the home's architectural integrity.

The upper-floor master suite is a sanctuary unto itself, occupying the entire level for complete privacy. Bathed in natural light, it opens onto a romantic private balcony overlooking a lush internal courtyard, evoking the timeless romance of a classic European villa. The adjoining grand en-suite bathroom feels more like a private spa, with generous proportions, a serene atmosphere, and direct connection to nature — a space designed for slow mornings and quiet evenings.

Throughout the home, spaces flow effortlessly between indoors and out, encouraging a lifestyle defined by light, calm, and understated luxury. Every room feels generous yet grounded, refined yet welcoming — equally suited to elegant entertaining or relaxed everyday living.

Set within a secure gated community, this is a property for those who value discretion, artistry, and long-term potential. A home that feels quietly exceptional rather than overtly showy — and one that offers the rare opportunity to evolve with its owner over time.

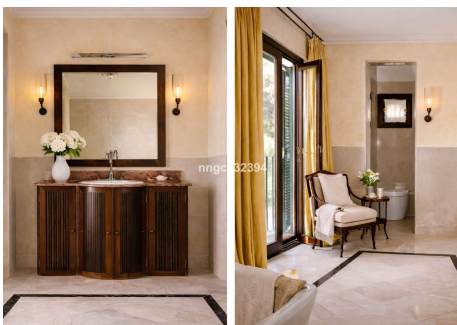
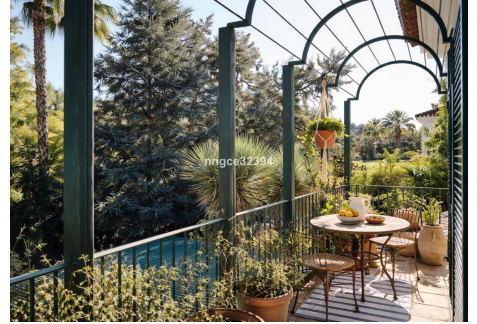
An art-filled retreat. A private estate. A home with soul, scale, and future possibility — moments from the marina and the sea.



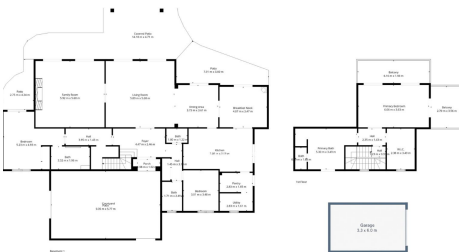
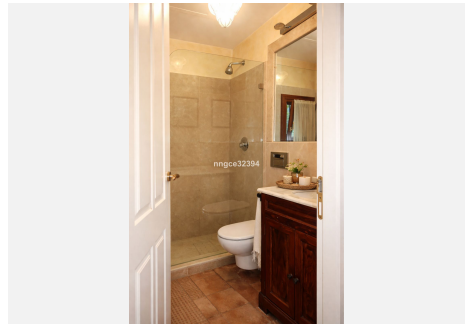
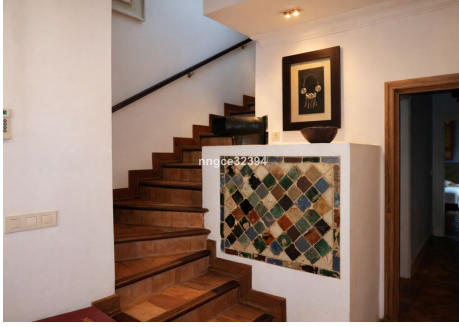


# IDILIQ

## ESTATES







TOTAL: 254 m<sup>2</sup>  
 BELOW GROUND: 198 m<sup>2</sup>, 1st floor: 56 m<sup>2</sup>  
 EXCLUDED AREAS: PORCH: 2 m<sup>2</sup>, PATIO: 83 m<sup>2</sup>, COVERED PATIO: 47 m<sup>2</sup>  
 UTILITY: 4 m<sup>2</sup>, BICYCLE: 22 m<sup>2</sup>, WALLS: 20 m<sup>2</sup> GARAGE: 20 m<sup>2</sup> (442 m<sup>2</sup> total)