



R5252458

 Torremuelle

REF# R5252458 1.395.000 €

BEDS

5

BATHS

3

BUILT

505 m²

PLOT

650 m²

TERRACE

34 m²

Welcome to this elegant and contemporary villa, perfectly situated in the heart of vibrant Benalmádena. Designed for those who appreciate space, style, and coastal living, this property offers a unique blend of luxury and comfort.

The villa features five well-proportioned bedrooms and three modern bathrooms, thoughtfully distributed across a light-filled layout. The open-plan living and dining area flows seamlessly into a fully equipped, contemporary kitchen, all oriented to capture panoramic views of the Mediterranean Sea.

The expansive basement level is tailored for leisure and entertainment, ideal for use as a home cinema, game room, or private gym. Outdoors, you'll find a private swimming pool, lush landscaped gardens, and sun-drenched terraces, creating an ideal setting for both relaxation and social gatherings.

Additional highlights include a private Jacuzzi, offering a spa-like retreat within your own home.

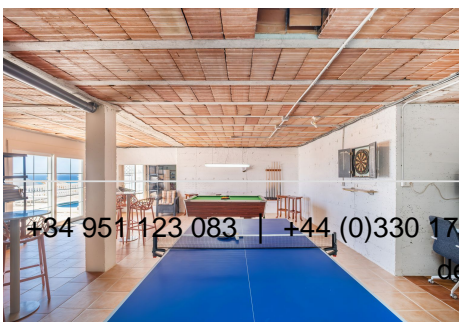
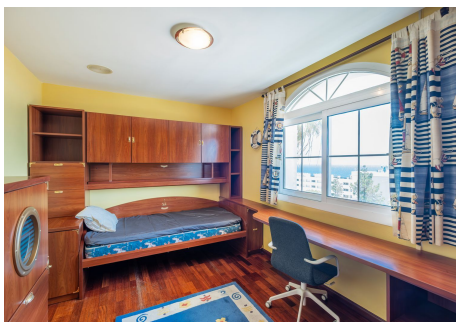
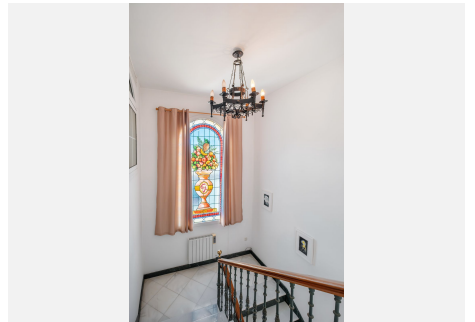
This property is ideally located just 200 meters from the beach, and only minutes from The British College, local cafés, tennis and padel courts, and the Torremuelle train station, providing direct access to Málaga

+34 951 123 083 | +44 (0)330 179 8687 | info@idiliqestates.com Local 28, Edificio D, Centro de Negocios Puerta de Banús, N-340, Km 175, 29660 Nueva Andalucía

IDILIQ

ESTATES

and the airport. It offers a perfect balance of privacy, convenience, and lifestyle in one of Costa del Sol's most desirable residential areas.



+34 951 123 083 | +44 (0)330 179 8687 | info@idiliqestates.com | Local 28, Edificio D, Centro de Negocios Puerta de Banús, N-340, Km 175, 29660 Nueva Andalucía