



R5248732

📍 Benahavís

REF# R5248732 695.000 €

BEDS

4

BATHS

4

BUILT

285 m²

TERRACE

57 m²

Spectacular townhouse in El Casar, Benahavís, one of the most exclusive developments in Benahavís village. The property stands out for its spaciousness, brightness, and functional layout, offering a total of 4 bedrooms, 4 bathrooms, and 1 guest toilet.

On the ground floor, you will find an elegant open-plan living space that integrates the kitchen, living room, and dining area, creating a comfortable and seamless environment. This level also features a fireplace and a guest toilet. From the living room, there is access to a large terrace with spectacular views, while a second terrace on the opposite side of the property is perfect for enjoying different sun orientations throughout the day.

The first floor comprises three bedrooms, all of them with en-suite bathrooms, ensuring privacy and comfort.

The basement level includes a fourth bedroom with its own en-suite bathroom, a laundry area, and an additional space that works perfectly as a storage room, providing excellent storage capacity. This floor also offers direct access to the private garage, with space for one car.

+34 951 123 083 | +44 (0)330 179 8687 | [info@idiliqestates.com](mailto:info@idiliqestates.com) Local 28, Edificio D, Centro de Negocios Puerta de Banús, N-340, Km 175, 29660 Nueva Andlucia

# IDILIQ

## ESTATES

The property is located within the prestigious El Casar urbanisation, which offers an exceptional range of high-quality facilities: three outdoor swimming pools, an indoor heated pool, a gym, clubhouse, sauna, and pleasant outdoor communal areas equipped with tables and seating for residents to enjoy. It is also within walking distance of Benahavís village.

Benahavís is renowned for its excellent quality of life, offering some of the best restaurants and bars on the Costa del Sol, as well as parks, a school, a nursery, and numerous hiking trails that lead to natural pools. The village also features paddle tennis courts, a football pitch, a golf practice tee, a municipal swimming pool, a dog park, and a sports pavilion. It is surrounded by prestigious golf courses, some just 5 minutes away by car.

A unique opportunity to acquire an exceptional home in a privileged development, surrounded by nature and offering every convenience at hand.





# IDILIQ

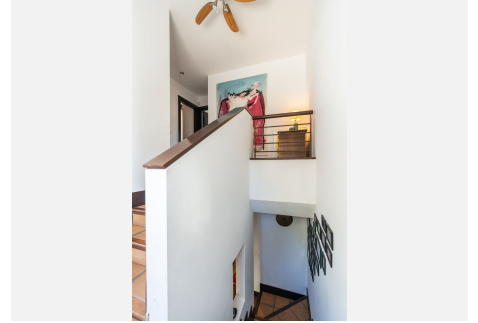
ESTATES





# IDILIQ

ESTATES





# IDILIQ

ESTATES

