



R5244235

📍 Río Real

REF# R5244235 10.000.000 €

BEDS

10

BATHS

10

BUILT

2600 m²

PLOT

5775 m²

TERRACE

700 m²

This extraordinary detached villa in Río Real, Marbella, offers a rare blend of classic Andalusian elegance and exceptional potential for modern transformation. Set atop a private hill, it enjoys uninterrupted views of the Mediterranean Sea, lush golf courses, and rolling green valleys—creating a serene yet captivating backdrop. With a vast plot of 5,775 m² and 2,600 m² of built space, the estate presents an outstanding lifestyle opportunity for discerning buyers seeking privacy, luxury, and architectural versatility.

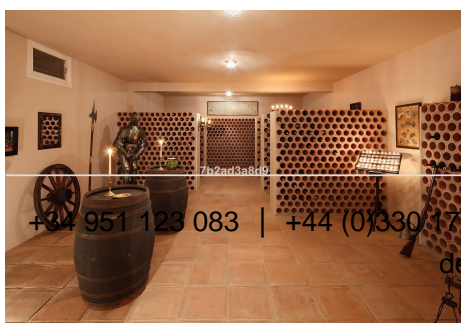
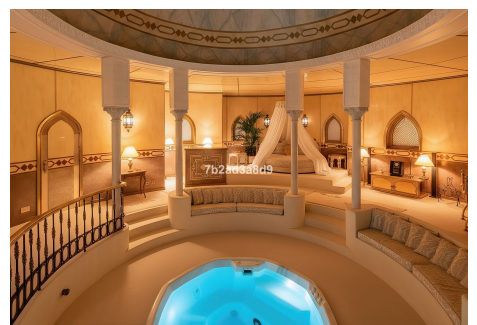
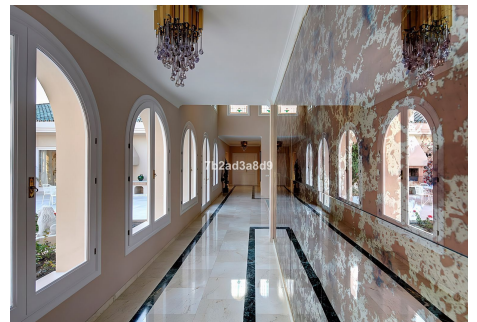
The property currently features ten bedrooms and ten bathrooms arranged within a timeless layout, complemented by multiple lounges, expansive terraces, and a pavilion ideal for wellness, entertaining, or a retreat-style bar. The main house includes a traditional central patio with a fountain, generous living and dining areas, and suites with direct access to the terraces and pool. A separate two-storey guest house offers additional bedrooms, lounges, and kitchen facilities, making it perfect for extended family or visitors. The estate further benefits from a four-car garage, beautifully landscaped gardens, and an impressive pool area designed to capture the spectacular sea and golf views.

IDILIQ

ESTATES

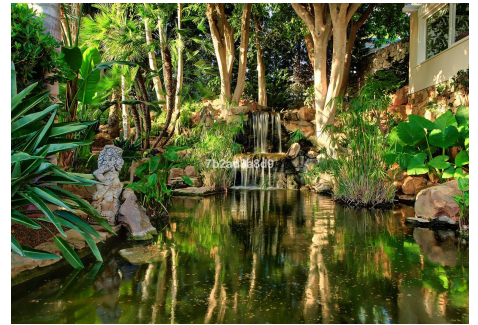
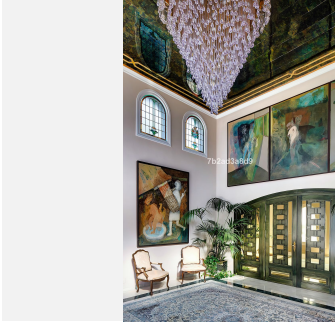
This remarkable villa can be acquired in two formats. The first option retains the existing classic architecture for €10,000,000, ideal for those who value traditional charm, generous proportions, and Andalusian character. The second option, priced at €15,000,000, offers a full renovation to create a contemporary luxury residence with up to twelve bedrooms and twelve bathrooms. This transformation allows for modern open-plan living, seamless indoor-outdoor integration, and upgraded wellness and entertainment amenities—resulting in a flagship property equipped with state-of-the-art systems.

A truly unique offering, this estate combines commanding elevation, absolute privacy, and panoramic views with total flexibility for modern design. Whether preserved as a prestigious family home, re-imagined as a bespoke contemporary residence, or positioned as a high-end rental or retreat, it represents an exceptional investment opportunity in one of Málaga's most desirable locations.



IDILIQ

ESTATES



IDILIQ

ESTATES

