



R5235598

📍 Sierra Blanca

REF# R5235598 3.000.000 €

BEDS

5

BATHS

5

BUILT

665 m²

TERRACE

120 m²

Elegant Corner Villa in Meisho Hills, Sierra Blanca, Marbella.

This very private home has 4 levels. Large living room, kitchen, 4 bedrooms on suit with 4 bathrooms and a small studio with a separate kitchen and shower.

Nestled in the prestigious Meisho Hills area of Sierra Blanca, Marbella, this stylish and private corner villa offers an exceptional blend of luxury, comfort, and panoramic views.

The main living area opens to a spacious terrace with a private pool and breathtaking sea views. This floor includes a comfortable bedroom with an en-suite bathroom, ideal for guests or family.

On the first floor, the master suite boasts stunning vistas of the sea and Gibraltar, complemented by a luxurious bathroom featuring a Jacuzzi, shower, and dual vanities. Two additional bedrooms, each with en-suite bathrooms, complete this level.

The attic level reveals a spectacular terrace offering panoramic views of La Concha Mountain, the Mediterranean Sea, and the surrounding countryside—perfect for relaxation or entertaining.

Additional features include a private elevator, three underground parking spaces, and a large storage room.

IDILIQ

ESTATES

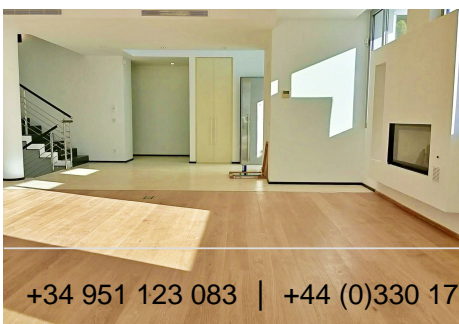
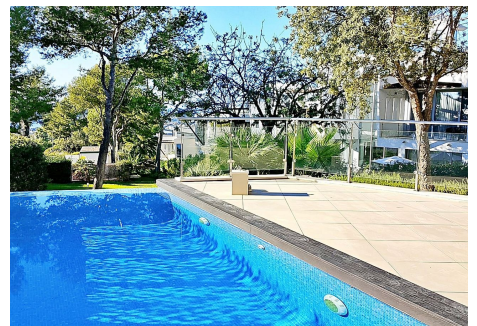
Within the gated community, residents enjoy exclusive access to three spas with an indoor heated pool, sauna, Turkish bath, and gym. The complex also offers two outdoor swimming pools, beautifully landscaped gardens, and 24-hour security for complete peace of mind.

Bordering a natural park and the protected pine forests of Nagüeles, this residence is just minutes from central Marbella, Puerto Banús, and several world-class golf courses. Its elevated position in Sierra Blanca ensures unmatched sea and mountain views, making it one of the most desirable addresses in Mediterranean Spain.

This award-winning development has received international recognition, including the B.I.D. International Quality Star Awards in London and Paris, and the Bentley International Property Awards for Best Architecture and Best Project.

Property Highlights:

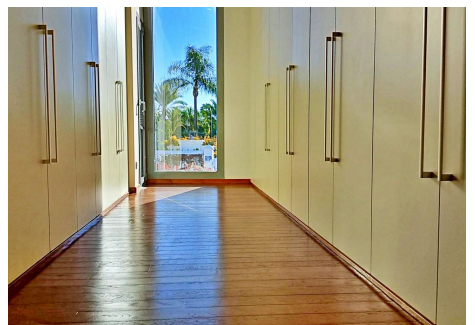
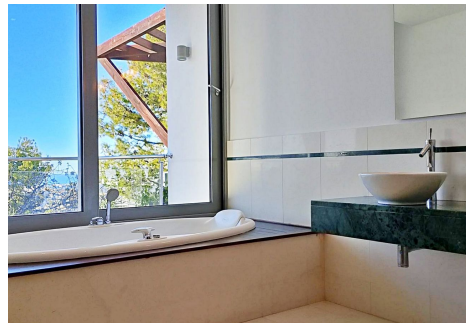
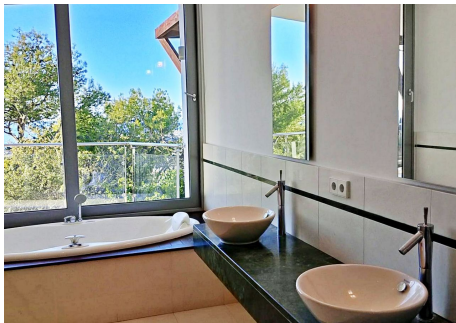
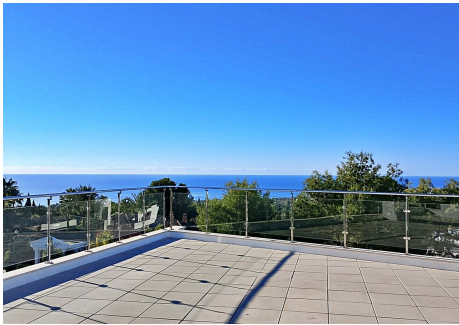
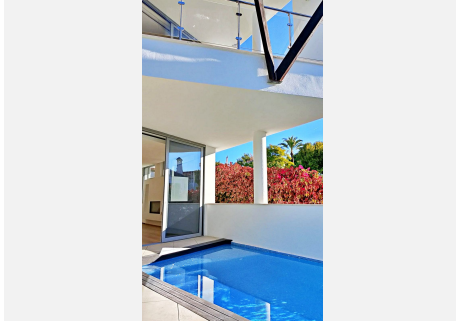
- Prime location in Sierra Blanca, Marbella
- 4 levels with private elevator
- Spacious living area with sea views
- Large terrace with private pool
- Master suite with Jacuzzi and panoramic views of Gibraltar
- Three additional en-suite bedrooms
- Attic terrace with mountain and sea views
- Three underground garages and ample storage
- Access to three spas, indoor heated pool, sauna, Turkish bath, and gym
- Two outdoor pools and landscaped gardens
- 24-hour gated security
- Award-winning architecture and design



+34 951 123 083 | +44 (0)330 179 8687 | info@idiliqestates.com Local 28, Edificio D, Centro de Negocios Puerta de Banús, N-340, Km 175, 29660 Nueva Andalucía

IDILIQ

ESTATES



IDILIQ

ESTATES

